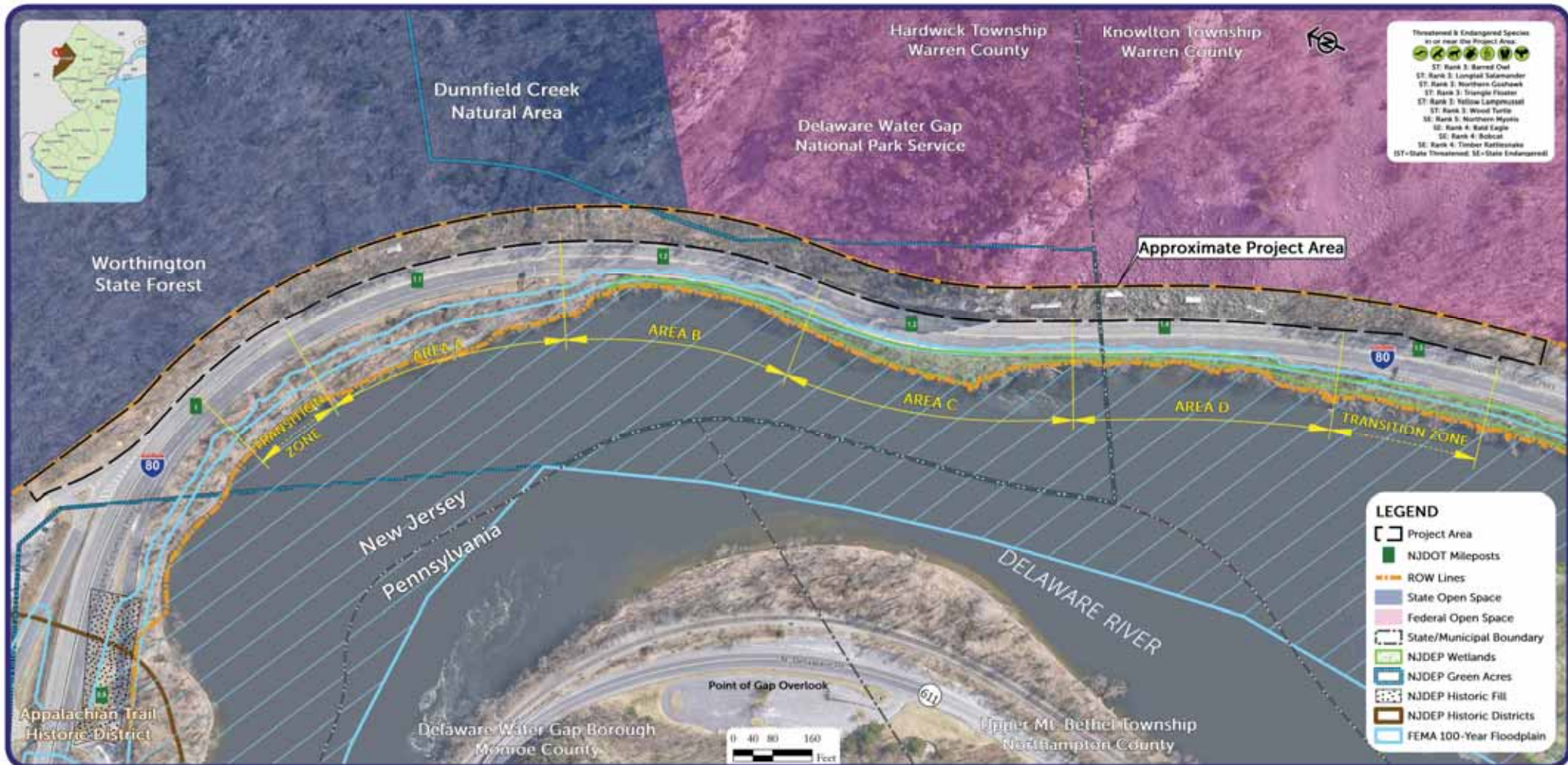




ENVIRONMENTAL CONSTRAINTS



NEPA



- The National Environmental Policy Act (NEPA) requires federal agencies to assess the environmental impacts of their proposed actions prior to making decisions.
- The lead agency provides opportunities for public participation.
- The lead agency considers the public input received.



NEW JERSEY DEPARTMENT
OF TRANSPORTATION
www.njdot.nj.gov





NEPA PROCESS

An Environmental Assessment (EA) will be prepared in accordance with the National Environmental Policy Act (NEPA). The Federal Highway Administration (FHWA) is the NEPA lead federal agency.

NEPA Schedule

We are Here

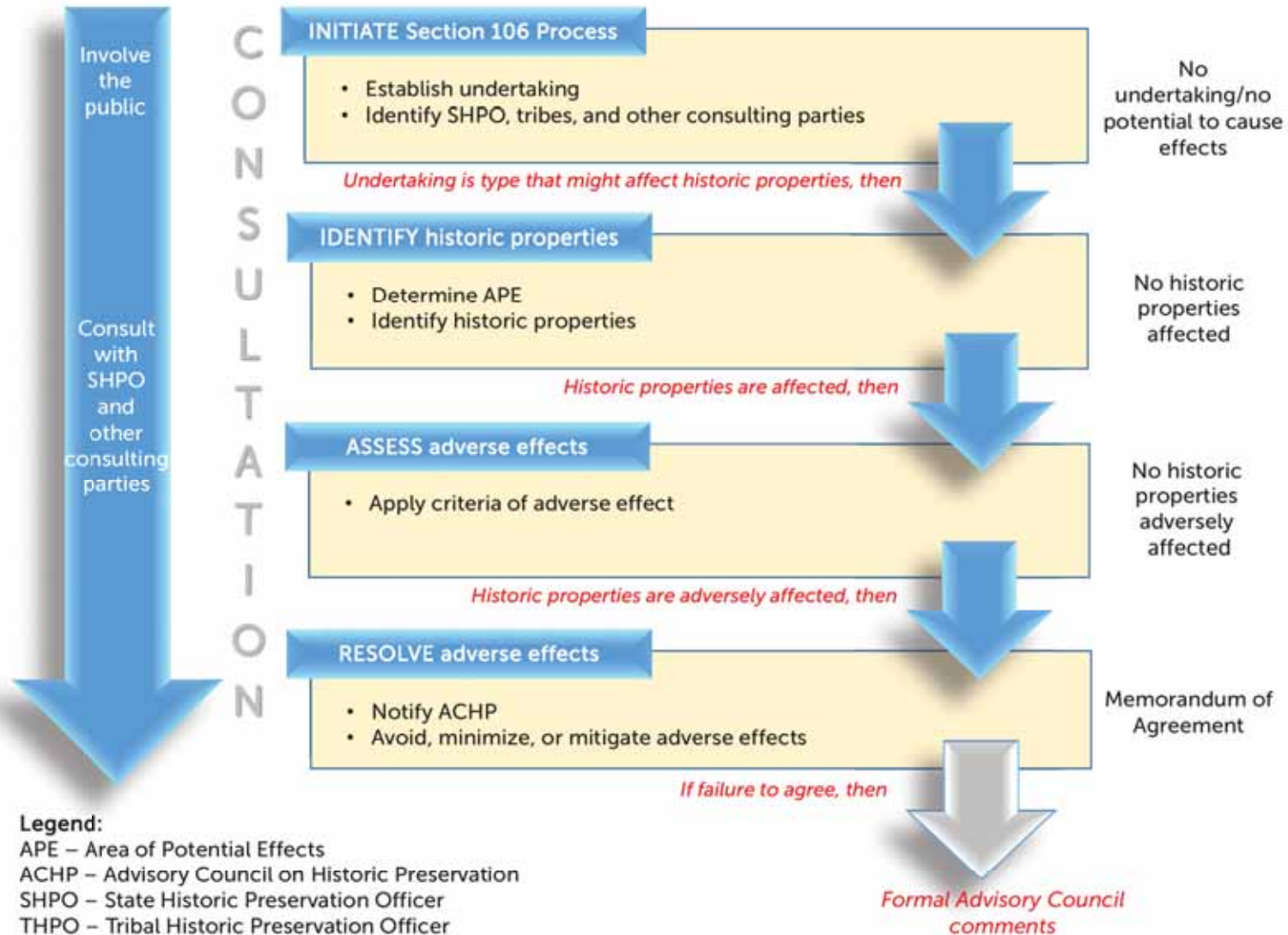


2011-2014	2015-2017	2018	2019	2020-2021	2022-2026
<ul style="list-style-type: none"> Agency & Stakeholder Consultation Concept Development Phase Preliminary Preferred Alternative Recommended 	<ul style="list-style-type: none"> Agency & Stakeholder Consultation Public Information Center (2017) Project advancing as a Categorical Exclusion Technical Environmental Studies 	<ul style="list-style-type: none"> Agency & Stakeholder Consultation Project changed to an EA 	<ul style="list-style-type: none"> Open House Agency & Stakeholder Consultation Technical Environmental Studies 	<ul style="list-style-type: none"> Publish EA EA Available to Public EA Public Comment Period Public Hearing Final Design / Permitting 	Construction Duration



SECTION 106 PROCESS

- The Historic Preservation Act of 1966 requires federal agencies to consider the effects of their actions on historic properties.
- By working closely with the SHPO, the Federal Highway Administration will participate in the Section 106 process.



Legend:

- APE – Area of Potential Effects
- ACHP – Advisory Council on Historic Preservation
- SHPO – State Historic Preservation Officer
- THPO – Tribal Historic Preservation Officer



NEW JERSEY DEPARTMENT OF TRANSPORTATION
www.njdot.nj.gov

