

# SALEM COUNTY

County Seat: Salem

### LEGEND

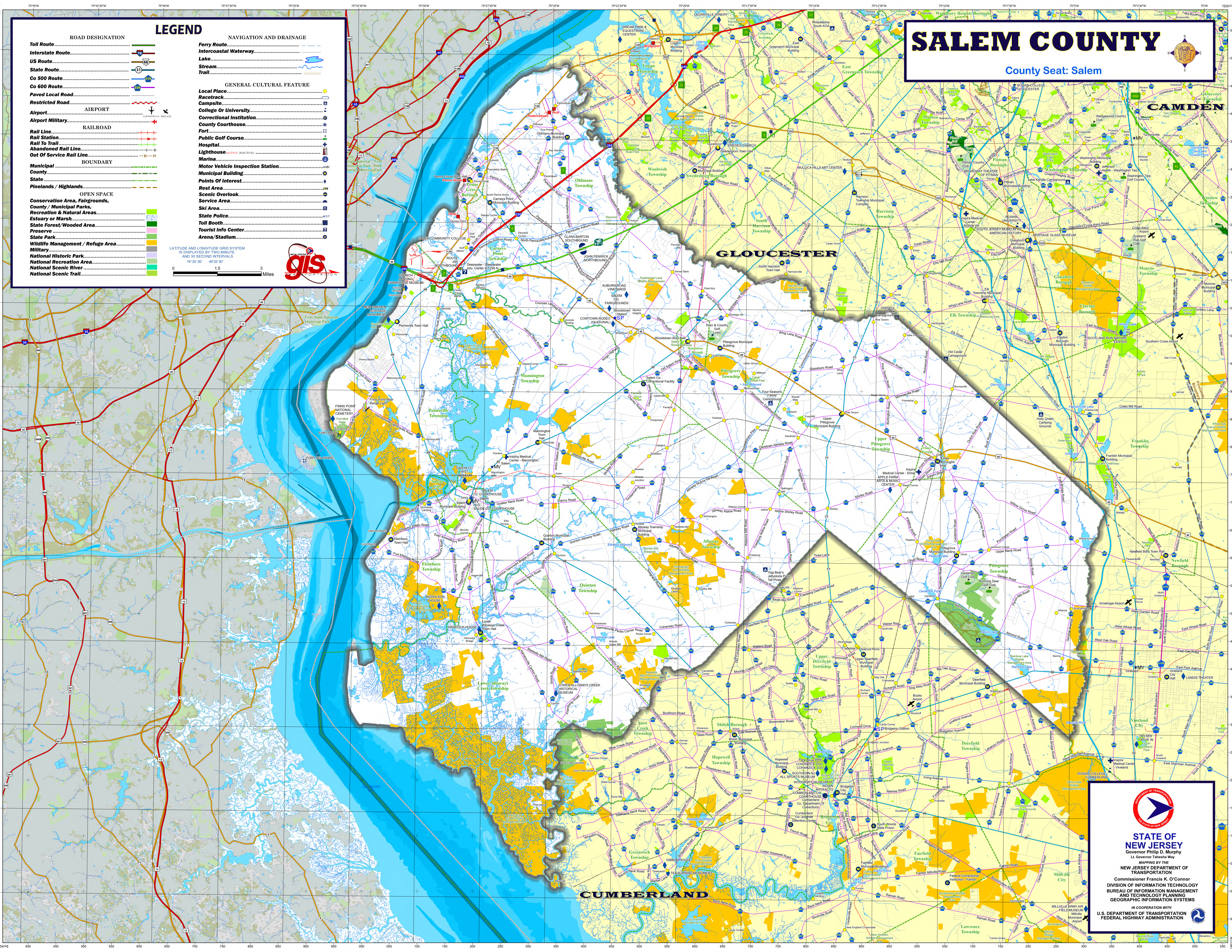
<b>ROAD DESIGNATION</b>	<b>NAVIGATION AND DRAINAGE</b>
Toll Route.....	Ferry Route.....
Interstate Route.....	Intercoastal Waterway.....
US Route.....	Lake.....
State Route.....	Stream.....
Co 500 Route.....	Trail.....
Co 600 Route.....	
Paved Local Road.....	
Restricted Road.....	
<b>AIRPORT</b>	
Airport.....	
Airport Military.....	
<b>RAILROAD</b>	
Rail Line.....	
Rail Station.....	
Rail To Trail.....	
Abandoned Rail Line.....	
Out Of Service Rail Line.....	
<b>BOUNDARY</b>	
Municipal.....	
County.....	
State.....	
Pinelands / Highlands.....	
<b>OPEN SPACE</b>	
Conservation Area, Fairgrounds, County / Municipal Parks, Recreation & Natural Areas.....	
Estuary or Marsh.....	
State Forest/Wooded Area.....	
Preserve.....	
State Park.....	
Wildlife Management / Refuge Area.....	
Military.....	
National Historic Park.....	
National Recreation Area.....	
National Scenic River.....	
National Scenic Trail.....	

**GENERAL CULTURAL FEATURE**

- Local Place
- Racetrack
- Campsite
- College Or University
- Correctional Institution
- County Courthouse
- Fort
- Public Golf Course
- Hospital
- Lighthouse
- Marina
- Motor Vehicle Inspection Station
- Municipal Building
- Points Of Interest
- Rest Area
- Scenic Overlook
- Service Area
- State Police
- Toll Booth
- Tourist Info Center
- Arena/Stadium

LATITUDE AND LONGITUDE GRID SYSTEM IS DISPLAYED BY TWO MINUTE AND 30 SECOND INTERVALS

0 1.5 3 Miles



**STATE OF NEW JERSEY**  
 Governor Philip D. Murphy  
 Lt. Governor Talisha Way

MADE BY THE  
**NEW JERSEY DEPARTMENT OF TRANSPORTATION**  
 Commissioner Francis K. O'Connor  
 DIVISION OF INFORMATION TECHNOLOGY  
 BUREAU OF INFORMATION MANAGEMENT  
 AND TECHNOLOGY PLANNING  
 GEOGRAPHIC INFORMATION SYSTEMS

IN COOPERATION WITH  
**U.S. DEPARTMENT OF TRANSPORTATION**  
 FEDERAL HIGHWAY ADMINISTRATION