

PASSAIC COUNTY

County Seat: Paterson

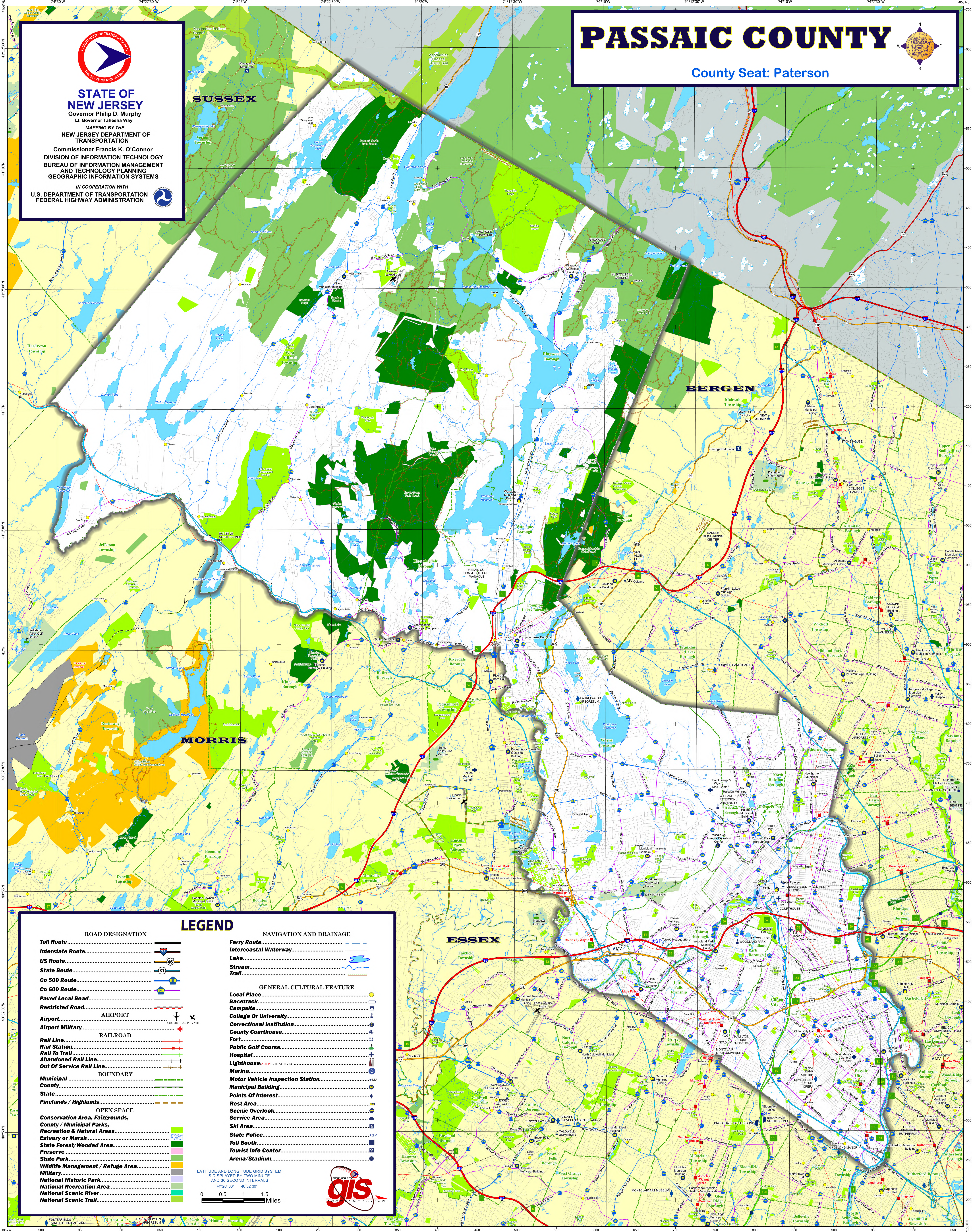


STATE OF NEW JERSEY
 Governor Philip D. Murphy
 Lt. Governor Tahesha Way

MAPPING BY THE
NEW JERSEY DEPARTMENT OF TRANSPORTATION

Commissioner Francis K. O'Connor
 DIVISION OF INFORMATION TECHNOLOGY
 BUREAU OF INFORMATION MANAGEMENT
 AND TECHNOLOGY PLANNING
 GEOGRAPHIC INFORMATION SYSTEMS

IN COOPERATION WITH
 U.S. DEPARTMENT OF TRANSPORTATION
 FEDERAL HIGHWAY ADMINISTRATION



LEGEND

ROAD DESIGNATION		NAVIGATION AND DRAINAGE	
Toll Route		Ferry Route	
Interstate Route		Intercoastal Waterway	
US Route		Lake	
State Route		Stream	
Co 500 Route		Trail	
Co 600 Route			
Paved Local Road		GENERAL CULTURAL FEATURE	
Restricted Road		Local Place	
AIRPORT		Racetrack	
Airport Military		Campsite	
RAILROAD		College Or University	
Rail Line		Correctional Institution	
Rail Station		County Courthouse	
Rail To Trail		Fort	
Out Of Service Rail Line		Public Golf Course	
BOUNDARY		Hospital	
Municipal		Lighthouse (ACTIVE/INACTIVE)	
County		Marina	
State		Motor Vehicle Inspection Station	
Pinelands / Highlands		Municipal Building	
OPEN SPACE		Points Of Interest	
Conservation Area, Fairgrounds, County / Municipal Parks, Recreation & Natural Areas		Road Area	
Estuary or Marsh		Scenic Overlook	
State Forest/Wooded Area		Service Area	
Preserve		Ski Area	
State Park		State Police	
Wildlife Management / Refuge Area		Toll Booth	
Military		Tourist Info Center	
National Historic Park		Arena/Stadium	
National Recreation Area			
National Scenic River			
National Scenic Trail			

LATITUDE AND LONGITUDE GRID SYSTEM IS DISPLAYED BY TWO MINUTE AND 30 SECOND INTERVALS
 74°20'00" 40°32'30"

0 0.5 1 1.5 Miles

