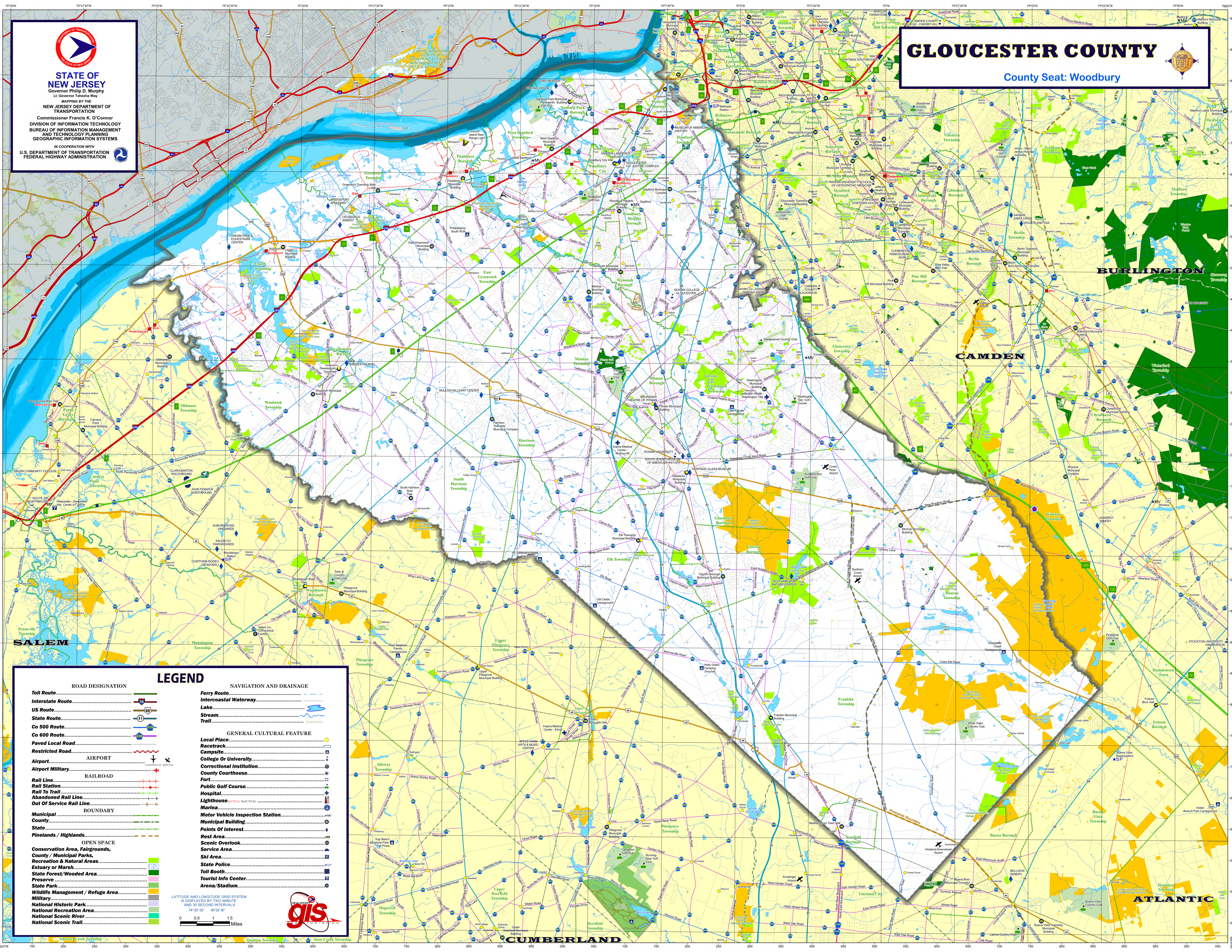
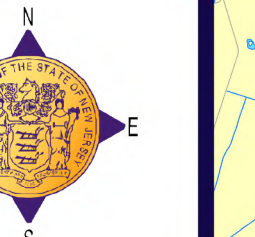


**STATE OF NEW JERSEY**  
Governor Philip D. Murphy  
Lt. Governor Tahesia Way

MAPPING BY THE  
**NEW JERSEY DEPARTMENT OF TRANSPORTATION**  
Commissioner Francis K. O'Connor  
DIVISION OF INFORMATION TECHNOLOGY  
**BUREAU OF INFORMATION MANAGEMENT AND TECHNOLOGY PLANNING AND GEOGRAPHIC INFORMATION SYSTEMS**  
IN COOPERATION WITH  
**U.S. DEPARTMENT OF TRANSPORTATION FEDERAL HIGHWAY ADMINISTRATION**

# GLOUCESTER COUNTY

County Seat: Woodbury



## LEGEND

ROAD DESIGNATION		NAVIGATION AND DRAINAGE	
Toll Route		Ferry Route	
Interstate Route		Intercoastal Waterway	
US Route		Lake	
State Route		Stream	
Co 500 Route		Trail	
Co 600 Route			
Paved Local Road		GENERAL CULTURAL FEATURE	
Restricted Road		Local Place	
Airport		Race Track	
Airport Military		Campsite	
	<b>RAILROAD</b>	College Or University	
Rail Line		Correctional Institution	
Rail Station		County Courthouse	
Rail To Trail		Fort	
Abandoned Rail Line		Public Golf Course	
Out Of Service Rail Line		Hospital	
	<b>BOUNDARY</b>	Lighthouse	
Municipal		Marina	
County		Motor Vehicle Inspection Station	
State		Municipal Building	
Pinelands / Highlands		Points Of Interest	
	<b>OPEN SPACE</b>	Rest Area	
Conservation Area, Fairgrounds, County / Municipal Parks, Recreation & Natural Areas		Scenic Overlook	
Estuary or Marsh		Service Area	
State Forest / Wooded Area		Ski Area	
Preserve		State Police	
State Park		Toll Booth	
Wildlife Management / Refuge Area		Tourist Info Center	
Military		Arena / Stadium	
National Historic Park			
National Recreation Area			
National Scenic River			
National Scenic Trail			

LATITUDE AND LONGITUDE GRID SYSTEM IS DISPLAYED BY TWO MINUTE AND 30 SECOND INTERVALS  
74° 20' 00" 40° 32' 30"  
0 0.5 1 1.5 Miles

