

ATLANTIC COUNTY

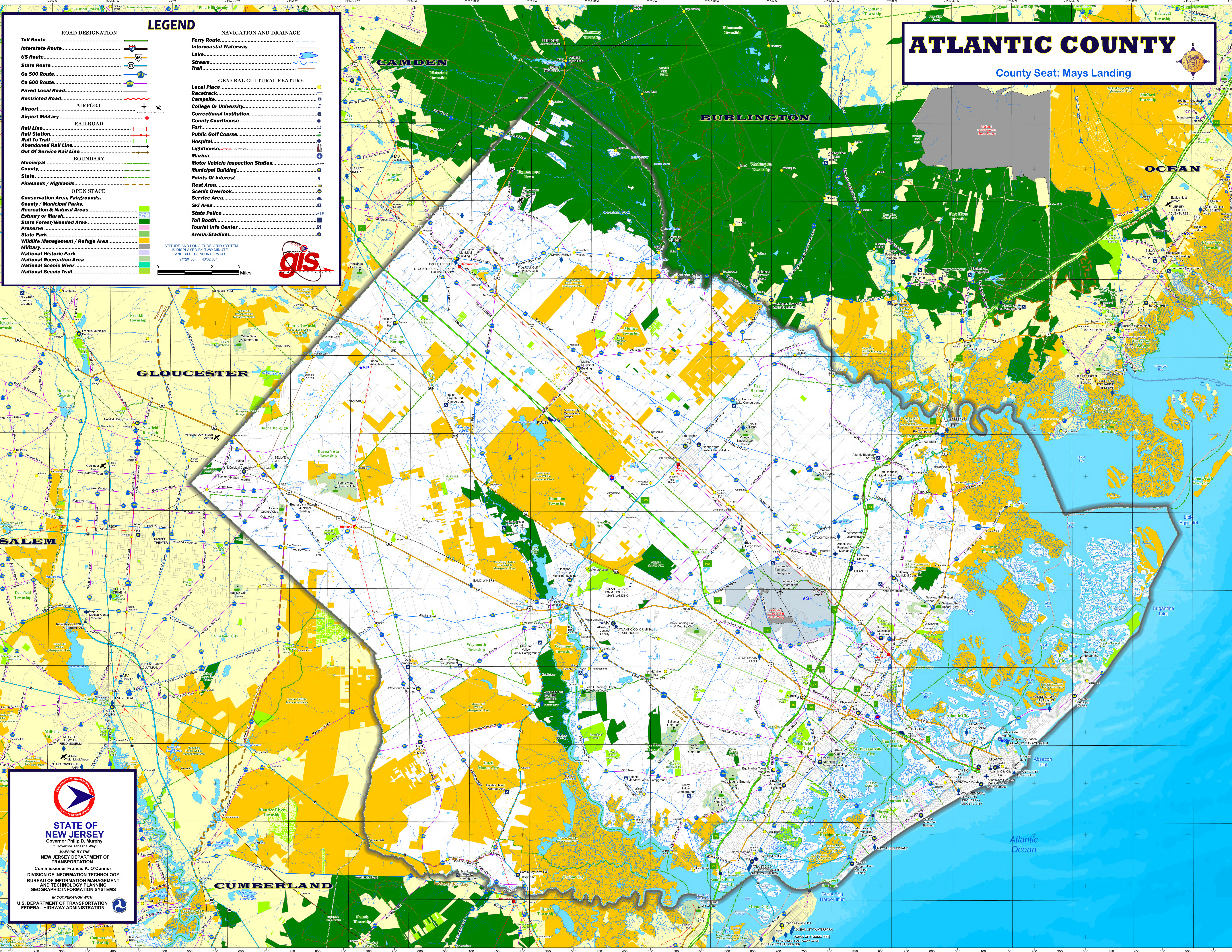
County Seat: Mays Landing

LEGEND

ROAD DESIGNATION		NAVIGATION AND DRAINAGE	
Toll Route.....		Ferry Route.....	
Interstate Route.....		Intercoastal Waterway.....	
US Route.....		Lake.....	
State Route.....		Stream.....	
Co 500 Route.....		Trail.....	
Co 600 Route.....			
Paved Local Road.....		GENERAL CULTURAL FEATURE	
Restricted Road.....		Local Place.....	
AIRPORT		Racetrack.....	
Airport.....		Campsite.....	
Airport Military.....		College Or University.....	
RAILROAD		Correctional Institution.....	
Rail Line.....		County Courthouse.....	
Rail Station.....		Fort.....	
Rail To Trail.....		Public Golf Course.....	
Abandoned Rail Line.....		Hospital.....	
Out Of Service Rail Line.....		Lighthouse.....	
BOUNDARY		Marina.....	
Municipal.....		Motor Vehicle Inspection Station.....	
County.....		Municipal Building.....	
State.....		Points Of Interest.....	
Pinelands / Highlands.....		Rest Area.....	
OPEN SPACE		Scenic Overlook.....	
Conservation Area, Fairgrounds, County / Municipal Parks, Recreation & Natural Areas.....		Service Area.....	
Estuary or Marsh.....		Ski Area.....	
State Forest/Wooded Area.....		State Police.....	
Preserve.....		Toll Booth.....	
State Park.....		Tourist Info Center.....	
Wildlife Management / Refuge Area.....		Arena/Stadium.....	
Military.....			
National Historic Park.....			
National Recreation Area.....			
National Scenic River.....			
National Scenic Trail.....			

LATITUDE AND LONGITUDE GRID SYSTEM
IS DISPLAYED BY TWO MINUTE
AND 30 SECOND INTERVALS.

0 1 2 3 Miles



STATE OF NEW JERSEY
Governor Philip D. Murphy
Lt. Governor Tahesha Way

MADE BY THE
NEW JERSEY DEPARTMENT OF TRANSPORTATION
Commissioner Francis K. O'Connor
DIVISION OF INFORMATION TECHNOLOGY
BUREAU OF INFORMATION MANAGEMENT
AND TECHNOLOGY PLANNING
GEOGRAPHIC INFORMATION SYSTEMS

IN COOPERATION WITH
**U.S. DEPARTMENT OF TRANSPORTATION
FEDERAL HIGHWAY ADMINISTRATION**