

INDEX FOR STANDARD ROADWAY CONSTRUCTION DETAILS

INDEX SHEET 2

DESCRIPTION	CD	DESCRIPTION	CD	DESCRIPTION	CD
DELINEATORS		HEADWALLS		INLET TYPE D1	CD-602-5.1
GROUND MOUNTED FLEXIBLE DELINEATORS	CD-610-4	CONCRETE HEADWALL AND APRON	CD-602-10	INLET TYPE D2	CD-602-5.2
		CONCRETE HEADWALL	CD-602-10.1	CURB PIECE FOR INLETS, TYPE D1 AND D2	CD-602-5.3
		CONCRETE HEADWALL WITH APRON	CD-602-10.2	GENERAL NOTES	CD-602-5.4
DRIVEWAYS		INLETS AND MANHOLES		REPLACE INLET CURB PIECE TYPE B OR D IN EXISTING CONCRETE BARRIER CURB	CD-602-5A
CONCRETE AND HMA DRIVEWAY AND SIDEWALK	CD-606-5	INLET GENERAL DETAILS	CD-602-1	EXISTING CONDITION	CD-602-5A.1
TYPE A	CD-606-5.1	CONNECTION OF PIPE AND INLET FOR PRECAST INLET	CD-602-1.1	DETAIL A	CD-602-5A.2
TYPE B	CD-606-5.2	RISER JOINT DETAIL FOR PRECAST INLETS	CD-602-1.2	SECTION A-A	CD-602-5A.3
TYPE C	CD-606-5.3	LADDER RUNG DETAIL	CD-602-1.3	DETAIL B	CD-602-5A.4
TYPE D	CD-606-5.4	DETAIL OF INVERT FOR INLET WITHOUT CONTINUOUS PIPE	CD-602-1.4	HMA PATCH AND GRADING	CD-602-5A.5
TYPE E	CD-606-5.5	COPOLYMER POLYPROPYLENE PLASTIC LADDER RUNG	CD-602-1.5	NOTES	CD-602-5A.6
TYPE F	CD-606-5.6	GENERAL NOTES	CD-602-1.6	REPLACE INLET CURB PIECE TYPE B OR D IN EXISTING CONCRETE BARRIER CURB IN NEW CONCRETE SECTION	CD-602-5B
GENERAL NOTES	CD-606-5.7	SQUARE FRAME MANHOLE CASTING, CIRCULAR COVER	CD-602-1.7	EXISTING CONDITION	CD-602-5B.1
TYPICAL DRIVEWAY TREATMENT	CD-606-5.8	BICYCLE SAFE GRATE (CAST IRON)	CD-602-1.8	DETAIL A	CD-602-5B.2
		INLETS, TYPE A, B, & C	CD-602-2	SECTION A-A	CD-602-5B.3
EMBANKMENT		INLET TYPE A	CD-602-2.1	DETAIL B	CD-602-5B.4
SOIL REUSE	CD-202-1	INLET TYPE B	CD-602-2.2	HMA PATCH AND GRADING	CD-602-5B.5
TEMPORARY STOCKPILING OF REGULATED MATERIAL OR ACID PRODUCING SOIL	CD-202-1.1	INLET TYPE C	CD-602-2.3	NOTES	CD-602-5B.6
		INLET TYPE A CASTING	CD-602-2.4	EXTENSION FRAMES FOR EXISTING INLETS	CD-602-6.1
REUSE OF REGULATED MATERIAL OR ACID PRODUCING SOIL IN UNPAVED AREAS, TYPICAL CROSS-SECTION	CD-202-1.2	ALTERNATE BACK PLATE	CD-602-2.5	EXTENSION RINGS FOR EXISTING MANHOLE	CD-602-7.1
		INLET TYPE B AND TYPE C CASTING	CD-602-2.6	MANHOLE	CD-602-8
REUSE OF REGULATED MATERIAL OR ACID PRODUCING SOIL IN ROADWAY OR RAMP EMBANKMENT, TYPICAL CROSS-SECTION	CD-202-1.3	METHOD OF SETTING CASTING FOR B TYPE INLET WHERE CURB PIECE HEIGHT IS 2" GREATER THAN CURB FACE	CD-602-2.7	MANHOLE FRAME AND COVER	CD-602-8.1
		GENERAL NOTE	CD-602-2.8	MANHOLE 5 FOOT DIAMETER, MANHOLE 6 FOOT DIAMETER	CD-602-8.2
REUSE OF REGULATED MATERIAL OR ACID PRODUCING SOIL FOR A RETAINING WALL	CD-202-1.4	DRIVEWAY ACCESS PLATE FOR INLET TYPE B AND TYPE C CASTING	CD-602-2A	GENERAL NOTES	CD-602-8.3
NOTES	CD-202-1.5	INLETS, TYPE B1, B2, & B, B1, & B2 MODIFIED	CD-602-3	PRECAST MANHOLE	CD-602-9
I-9 SOIL AGGREGATE AND EMBANKMENT	CD-203-1	INLET, TYPE B MODIFIED	CD-602-3.1	MANHOLE PRECAST CONCRETE MANHOLE 5' DIAMETER, MANHOLE 6' DIAMETER PRECAST CONCRETE	CD-602-9.1
BENCHING DETAIL	CD-203-1.1	INLET, TYPE B1 MODIFIED AND TYPE B2 MODIFIED	CD-602-3.2	48" PRECAST REINFORCED CONCRETE MANHOLE FLAT TOP	CD-602-9.2
LIMITS OF PLACING EMBANKMENT AND I-9 SOIL AGGREGATE	CD-203-1.2	METHOD OF DEPRESSING INLETS AT SHOULDERS	CD-602-3.3	PRECAST MANHOLE RISER JOINT	CD-602-9.3
		FRAME TO BE USED FOR INLET, TYPE B MODIFIED	CD-602-3.4		
		INLETS, TYPE B1 AND TYPE B2	CD-602-3.5		
FENCES		GENERAL NOTE	CD-602-3.6	ISLANDS	
CHAIN-LINK FENCE	CD-605-1	INLETS, TYPE E, E1, E2, & ES	CD-602-4	CONCRETE AND HMA ISLAND	CD-606-6
CHAIN-LINK FENCE, ___' HIGH	CD-605-1.1	INLETS, TYPE E1 AND TYPE E2	CD-602-4.1	CONCRETE ISLAND ON EXISTING PAVEMENT	CD-606-6.1
DRIVE ANCHOR SHOE ASSEMBLY	CD-605-1.2	INLET, TYPE E	CD-602-4.2	LONGITUDINAL AND TRANSVERSE JOINT TREATMENT FOR CONCRETE ISLAND	CD-606-6.2
CHAIN-LINK FENCE ASSEMBLIES	CD-605-1.3	FRAME FOR INLET, TYPE E	CD-602-4.3	HMA ISLAND, 10" THICK	CD-606-6.3
GENERAL NOTES	CD-605-1.4	INLET, TYPE ES	CD-602-4.4	CONCRETE ISLAND, 4" THICK	CD-606-6.4
GATES, CHAIN-LINK FENCE, ___' WIDE	CD-605-1.5	SET INLET TYPE ES, CASTING	CD-602-4.5		
CHAIN-LINK FENCE	CD-605-2	GENERAL NOTE	CD-602-4.6		
CHAIN-LINK FARM-TYPE FENCE	CD-605-2.1	INLETS, TYPE D1 & D2	CD-602-5		

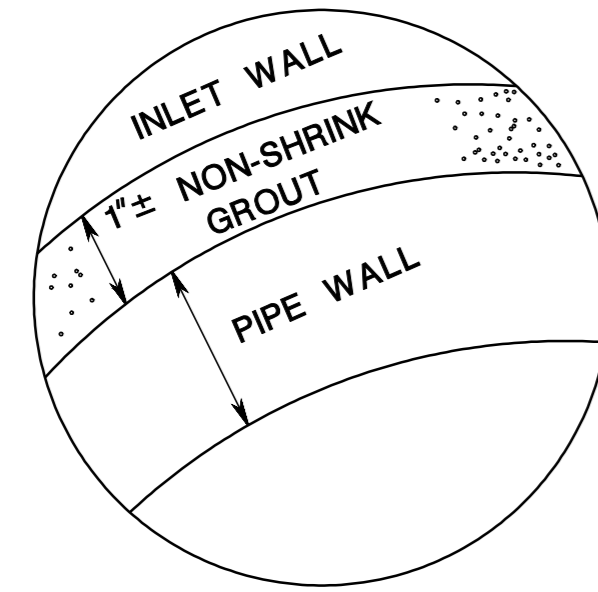
ID = 000764207
 date = 19-FEB-2025 11:15
 scale = 63/169228:1.000000
 pen table = \\jtdp01p01\work\projects\jtdoteng\pilot\hba\roadway\Details_12x17.tbl
 BDC24D-04 - REVISED
 BDC23D-04 - REVISED
 BDC22D-01 - NEW SHEETS CD-602-5A THRU 5B
 BDC18D-05-ADDED SHEET CD-602-2A
 BDC18D-05-ORIGINAL SHEET

INDEX FOR STANDARD ROADWAY CONSTRUCTION DETAILS

INDEX SHEET 3

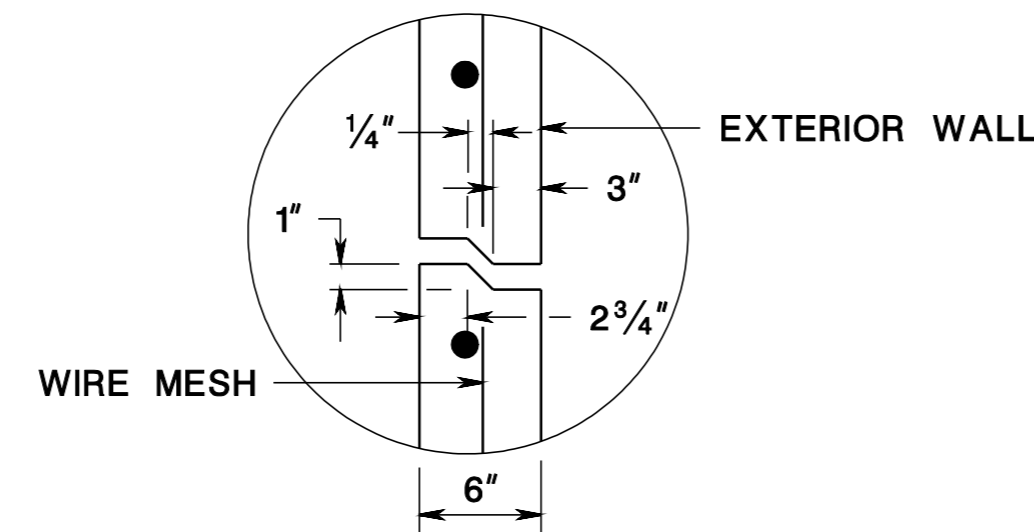
DESCRIPTION	CD	DESCRIPTION	CD	DESCRIPTION	CD
JOINTS		LANDSCAPING		NON-VEGETATIVE SURFACE, UNDER MEDIAN GUIDE RAIL	CD-608-1.7
LONGITUDINAL JOINTS IN HMA	CD-401-2	TOPSOIL STABILIZATION	CD-807-1	GUIDE RAIL OFFSET FROM EDGE OF PAVEMENT WIDTH OF NON-VEGETATIVE SURFACE IN FRONT OF GUIDE RAIL	CD-608-1.8
WEDGE JOINT	CD-401-2.1	TOPSOIL STABILIZATION MATTING	CD-807-1.1	NON-VEGETATIVE SURFACE AROUND OVERHEAD SIGN FOUNDATIONS AND UNDER LARGE GROUND MOUNTED SIGNS	CD-608-1.9
OFFSET OF JOINTS	CD-401-2.2	PLANTING	CD-811-1	GENERAL NOTES	CD-608-1.10
HMA PAVEMENT	CD-401-2.3	TREE PLANTING - 2H:1V SLOPE	CD-811-1.1	NON-VEGETATIVE SURFACE AT MEDIAN GUIDE RAIL	CD-608-1.11
COMPACTION OF UNCONFINED VERTICAL EDGE	CD-401-2.4	TREE AND SHRUB PLANTING DETAIL	CD-811-1.2		
ROLLER PLACEMENT FOR COMPACTING ALONG THE UNCONFINED VERTICAL EDGE	CD-401-2.5	CONTAINERIZED PLANTING DETAIL	CD-811-1.3	PIPES	
NOTES	CD-401-2.6	WIRE BASKET REMOVAL	CD-811-1.4	PIPE END SECTIONS	CD-601-2
CONCRETE PAVEMENT TRANSVERSE JOINTS	CD-405-1	STAKING DETAILS	CD-811-1.5	CORRUGATED ALLUMINUM ALLOY END SECTION	CD-601-2.1
TYPICAL LAYOUT	CD-405-1.1	GUYING DETAILS	CD-811-1.6	REINFORCED CONCRETE END SECTION	CD-601-2.2
EXPANSION JOINTS AT BRIDGES	CD-405-1.2	FASTENING DETAIL	CD-811-1.7	CONCRETE COLLAR	CD-601-2.3
NOTES	CD-405-1.3	PRUNING AT TIME OF PLANTING	CD-811-1.8	CROSS DRAIN OR UTILITY TRENCH CONSTRUCTION	CD-601-3
TRANSVERSE EXPANSION JOINT	CD-405-1.4	TREE PROTECTION DETAIL	CD-811-1.9	CONCRETE SURFACE COURSE REPLACEMENT AT CROSS DRAIN OR UTILITY TRENCH	CD-601-3.1
TRANSVERSE CONTRACTION JOINT	CD-405-1.5	PLANTING	CD-811-2	HMA REPLACEMENT WHERE EXISTING CONCRETE COURSE IS REMOVED AT CROSS DRAIN OR UTILITY TRENCH WITH PROPOSED RESURFACING	CD-601-3.2
DETAIL A HOT-POURED JOINT SEALER	CD-405-1.6	SHRUB PLANTING BEHIND GUIDE RAIL	CD-811-2.1	HMA REPLACEMENT WHERE CONCRETE COURSE IS REMOVED AT CROSS DRAIN OR UTILITY TRENCH	CD-601-3.3
DETAIL B COLD-POURED JOINT SEALER WITH BACKER ROD	CD-405-1.7	HEMEROCALLIS AND NARCISSUS BED PLANTING DETAIL	CD-811-2.2	HMA REPLACEMENT WHERE EXISTING OVERLAY AND CONCRETE COURSE IS REMOVED AT CROSS DRAIN OR UTILITY TRENCH WITH PROPOSED RESURFACING	CD-601-3.4
DETAIL C COLD-POURED JOINT SEALER WITHOUT BACKER ROD	CD-405-1.8	SHRUB BED PLANTING DETAIL	CD-811-2.3	NOTES	CD-601-3.5
CONCRETE PAVEMENT LONGITUDINAL JOINTS	CD-405-2	NARCISSUS IN TURF DETAIL	CD-811-2.4		
TIE BOLT DETAIL	CD-405-2.1	HEDGE PLANTING DETAIL	CD-811-2.5	RAISED PAVEMENT MARKER (RPM)	
CONSTRUCTION JOINT TIE BOLT	CD-405-2.2			RAISED PAVEMENT MARKER (RPM), LOCATION	CD-610-1
CONSTRUCTION JOINT TIE BAR	CD-405-2.3	MILLING		TYPICAL DECELERATION LANE TREATMENT	CD-610-1.1
STATIONARY FORMING	CD-405-2.4	MILLING TRANSITIONS	CD-401-1.1	LEGEND	CD-610-1.2
SLIP FORMING	CD-405-2.5	END TREATMENT FOR MILLING OPERATIONS	CD-401-1.2	TYPICAL ACCELERATION LANE TREATMENT	CD-610-1.3
CONTRACTION JOINT	CD-405-2.6			TYPICAL PAVED MEDIAN TREATMENT	CD-610-1.4
NOTES	CD-405-2.7	MONUMENT		RAISED PAVEMENT MARKER (RPM), LOCATION	CD-610-2
LONGITUDINAL JOINT WHEN TYING INTO EXISTING CONCRETE PAVEMENT / SHOULDER	CD-405-2.8	MONUMENT AND MONUMENT BOX	CD-157-1	TYPICAL DIVISIONAL ISLAND TREATMENT	CD-610-2.1
CONCRETE PAVEMENT JOINTS NON-SKEWED LOAD TRANSFER ASSEMBLIES	CD-405-3	MONUMENT	CD-157-1.1	NARROW BRIDGE OR CULVERT TREATMENT	CD-610-2.2
TYPICAL EXPANSION JOINT ASSEMBLY - PLAN	CD-405-3.1	MONUMENT BOX FOR NEW MONUMENT	CD-157-1.2	LEGEND	CD-610-2.3
TYPICAL CONTRACTION JOINT ASSEMBLY - PLAN	CD-405-3.2			TYPICAL TWO LANE SECTION	CD-610-2.4
EXPANSION JOINT ASSEMBLY - ELEVATION	CD-405-3.3	NON-VEGETATIVE SURFACE		TYPICAL LEFT TURN LANE SECTION	CD-610-2.5
CONTRACTION JOINT ASSEMBLY - ELEVATION	CD-405-3.4	NON-VEGETATIVE SURFACES AROUND GUIDE RAIL ANCHORAGE	CD-608-1	RAISED PAVEMENT MARKER (RPM), LOCATION	CD-610-3
CENTER FRAME WIRE DETAIL	CD-405-3.5	NON-VEGETATIVE SURFACES AROUND GUIDE RAIL BEHIND CURB OR RAISED BERM	CD-608-1.1	TYPICAL MULTI-LANE DIVIDED SECTION	CD-610-3.1
EXPANSION JOINT ASSEMBLY - SECTION A-A	CD-405-3.6	NON-VEGETATIVE SURFACE AT EDGE OF PAVEMENT ON UMBRELLA SECTION WHERE GUIDE RAIL IS USED	CD-608-1.2	TYPICAL MULTI-LANE UNDIVIDED SECTION	CD-610-3.2
CONTRACTION JOINT ASSEMBLY - SECTION B-B	CD-405-3.7	NON-VEGETATIVE SURFACES AROUND GUIDE RAIL ANCHORAGE	CD-608-1.3	METHOD FOR DETERMINING RPM SPACING ON HORIZONTAL CURVES	CD-610-3.3
TYPICAL SIDE FRAME DETAIL - "A" DESIGN	CD-405-3.8	LEAVE OUT FOR NON-VEGETATIVE SURFACE, HOT MIX ASPHALT ONLY	CD-608-1.4	LEGEND	CD-610-3.4
NOTES	CD-405-3.9	NON-VEGETATIVE SURFACE AROUND FLARED GUIDE RAIL WHERE GUIDE RAIL OFFSET FROM EDGE OF PAVEMENT IS GREATER THAN 4'-0"	CD-608-1.5		
		NON-VEGETATIVE SURFACE AROUND FLARED GUIDE RAIL WHERE GUIDE RAIL OFFSET FROM EDGE OF PAVEMENT IS 4'-0" OR LESS	CD-608-1.6		

ID=000754207
 BDC24D-04 - REVISED
 BDC22D-01 - REVISED
 BDC20D-02 DRAFT - ADDITION OF CD-610-5.2
 BDC18D-01 ORIGINAL SHEET
 scale=63/169228:1.000000
 date=19-FEB-2025 11:20
 pen table=\\nfdotprjwa\vsy\nteam\projects\rdoteng\pilot\tbl\roadway\Details_12x17.tbl



CONNECTION OF PIPE AND INLET FOR PRECAST INLET

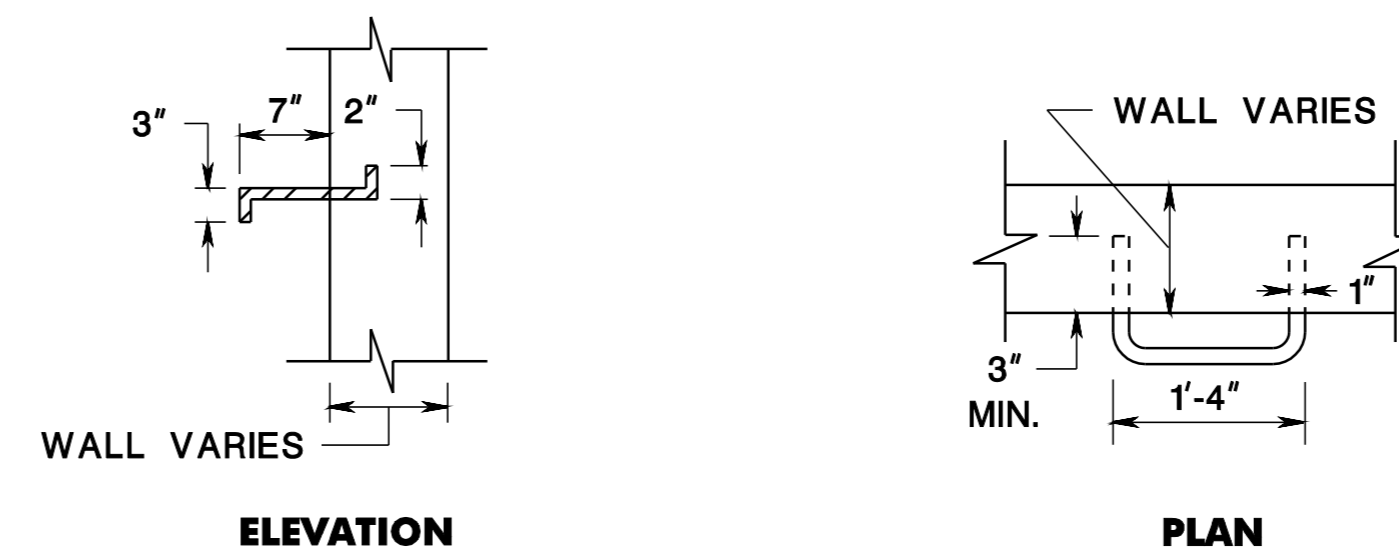
CD-602-1.1



RISER JOINT DETAIL FOR PRECAST INLETS

NOTE:
JOINT TO BE GROUTED WITH MORTAR BY CONTRACTOR

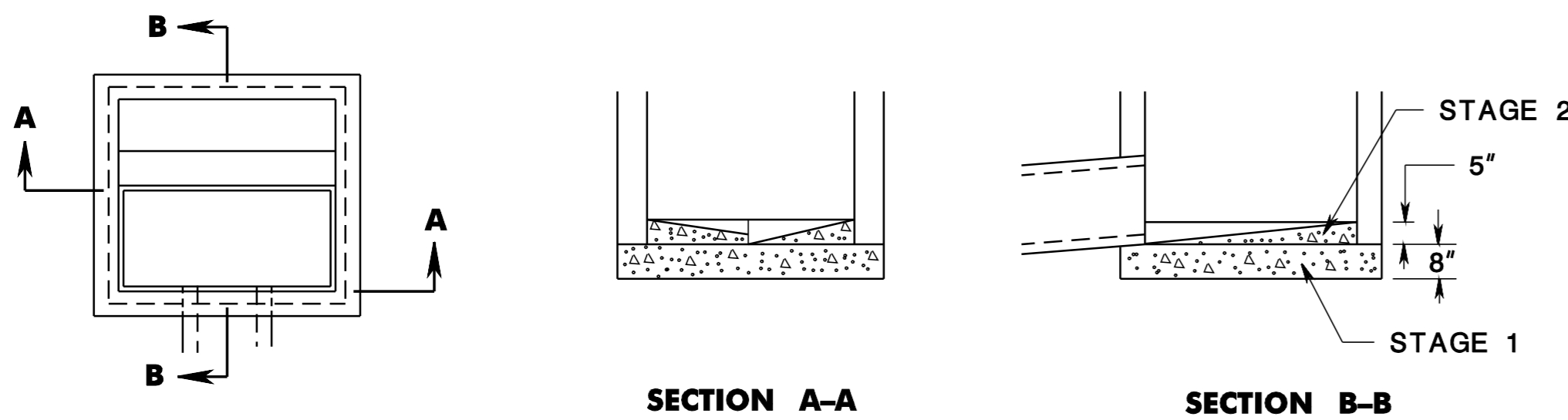
CD-602-1.2



LADDER RUNG DETAIL

NOTE:
LADDER RUNGS FACING TRAFFIC 12" C TO C

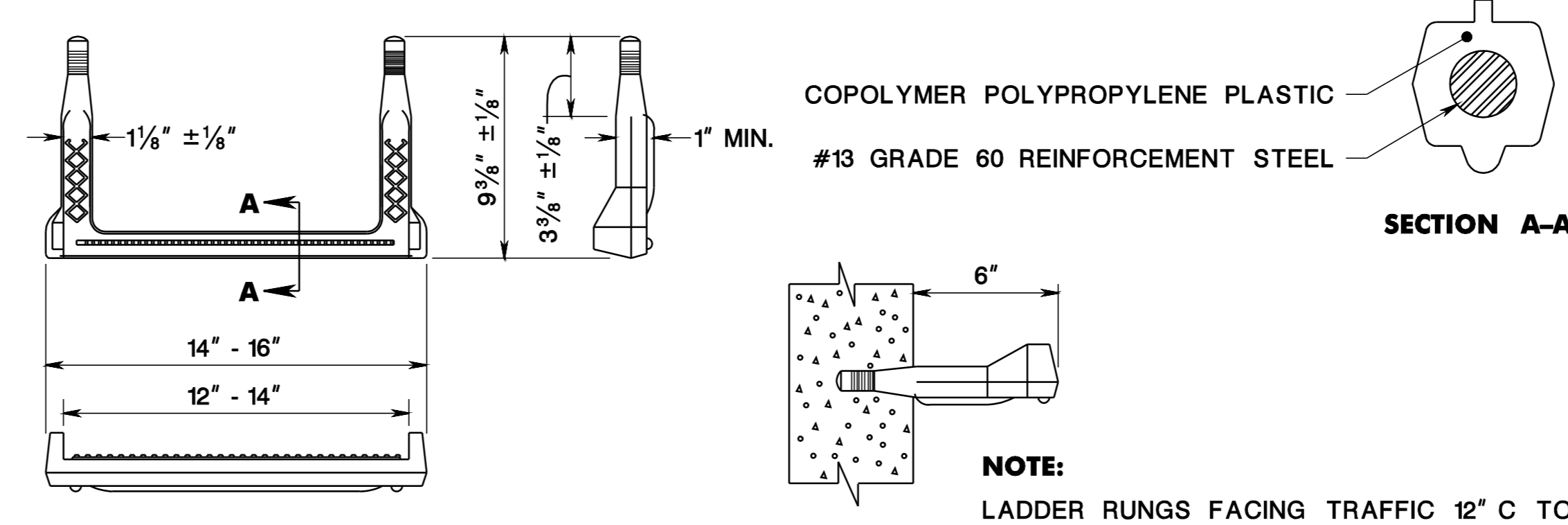
CD-602-1.3



NOTE:
FOUNDATION AND INVERT TO BE CONSTRUCTED IN TWO STAGES. THE TOP SURFACE OF STAGE 1 TO BE LEFT ROUGH.

DETAIL OF INVERT FOR INLET WITHOUT CONTINUOUS PIPE

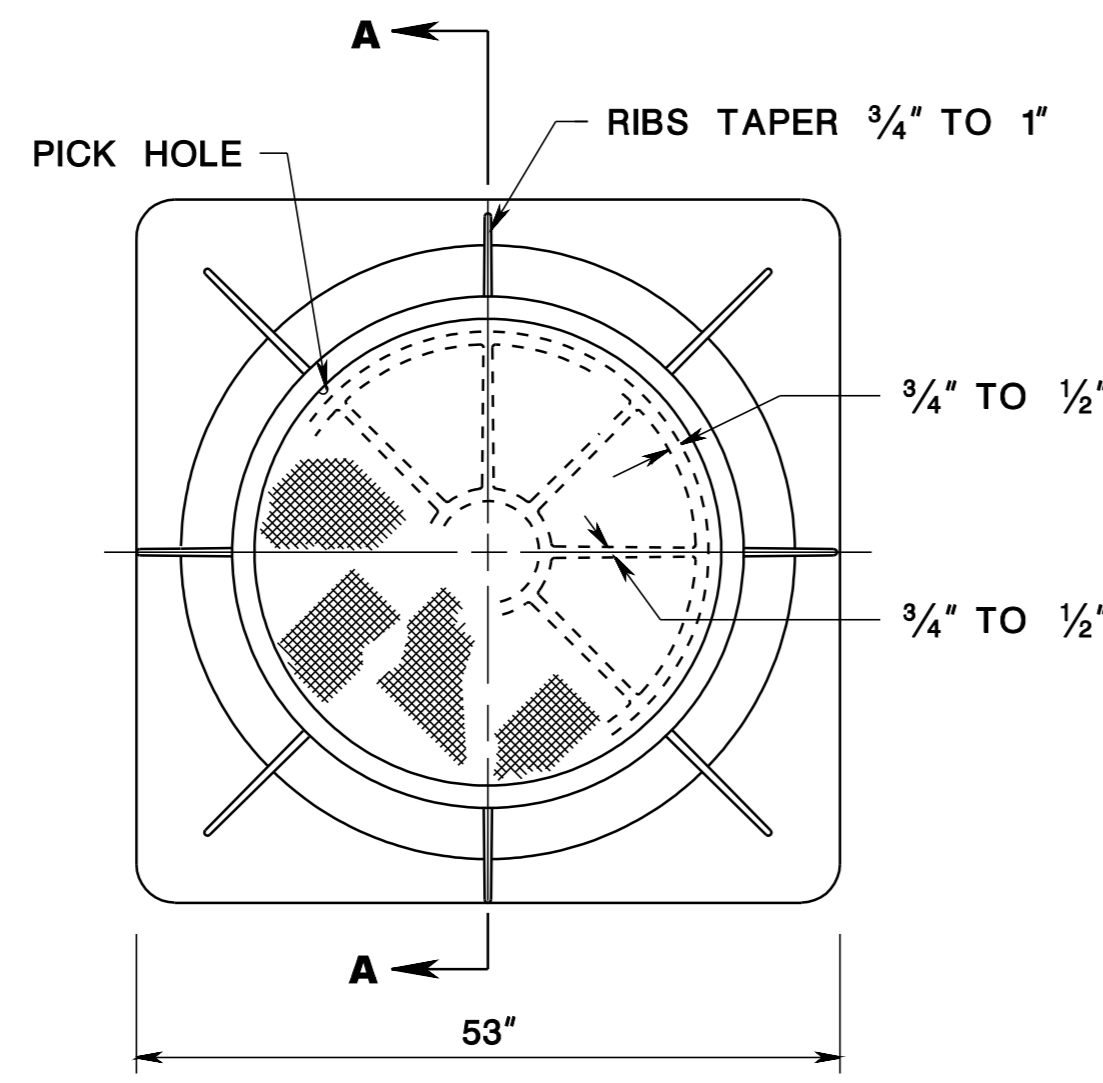
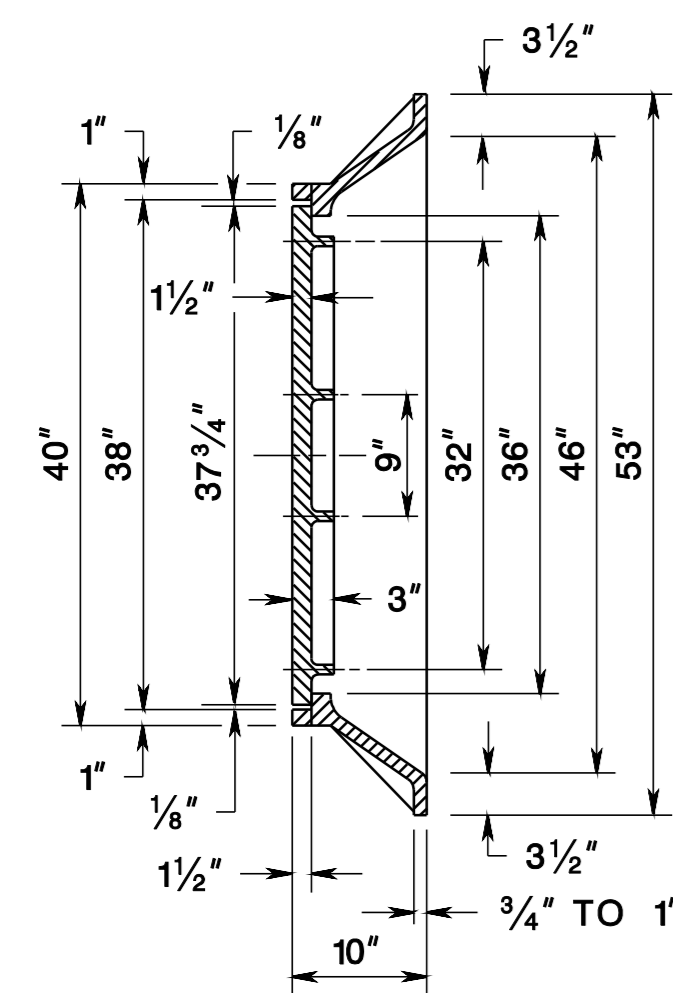
CD-602-1.4



COPOLYMER POLYPROPYLENE PLASTIC LADDER RUNG

NOTE:
LADDER RUNGS FACING TRAFFIC 12" C TO C

CD-602-1.5

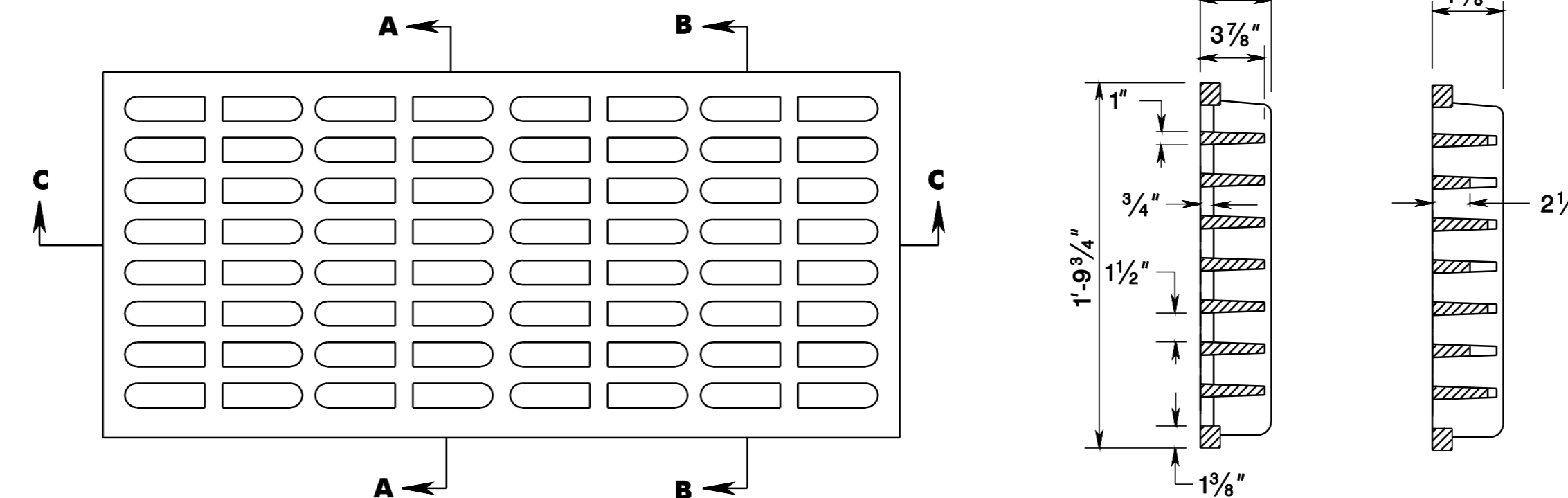


NOTE:
SEE GENERAL NOTE 9, CD-602-1.6

MINIMUM WEIGHTS
WEIGHT OF FRAME = 630#
WEIGHT OF COVER = 400#

SQUARE FRAMED MANHOLE CASTING, CIRCULAR COVER

CD-602-1.7



WEIGHT 300 ± 15 LBS.

NOTE:
SEE GENERAL NOTE 9, CD-602-1.6

BICYCLE SAFE GRATE (CAST IRON)

CD-602-1.8

GENERAL NOTES:

- INLETS MAY BE CONSTRUCTED OF BRICK, CONCRETE, CONCRETE BLOCK, OR PRECAST CONCRETE. WALLS TO BE 8 INCHES THICK IF BRICK AND 6 INCHES THICK IF CONCRETE, CONCRETE BLOCK, OR PRECAST CONCRETE. INLET FOUNDATIONS AND INVERTS TO BE CLASS B CONCRETE.
- CORBELLING OF INLET WALLS WILL BE PERMITTED AT THE RATE OF 1/2 INCH PER 8 INCHES OF HEIGHT; MAXIMUM CORBEL 6 INCHES PER WALL.
- EXCEPT FOR INLETS TYPE A AND C, FOUNDATIONS AND INVERTS TO BE CONSTRUCTED IN TWO STAGES, AND THE BOTTOM OF THE FOOTINGS TO BE 8 INCHES BELOW THE OUTER WALL OF THE LOWEST PIPE IN THE INLET.
- WHEN THE DEPTH OF AN INLET THAT IS NOT PRECAST EXCEEDS 10 FEET AS MEASURED FROM TOP OF GRATE TO INVERT, WALLS BELOW A DEPTH OF 8 FEET TO BE 12 INCHES THICK AND THE DEPTH OF FOUNDATION INCREASED TO 12 INCHES. WHEN ROCK IS ENCOUNTERED, THE DEPTH OF THE FOUNDATION NOT TO BE INCREASED.
- PLACE INLET FOUNDATIONS WHICH ARE PRECAST ON A 6 INCH THICK BED OF COMPACTED COARSE AGGREGATE #57. EXTEND THE COARSE AGGREGATE 6 INCHES BEYOND THE HORIZONTAL LIMITS OF THE INLET FOUNDATION.
- ADJUST CASTINGS FOR PRECAST INLETS TO GRADE WITH COURSES OF BRICK, AS REQUIRED, 12 INCHES MAXIMUM.
- WHEN THE DEPTH OF A PRECAST INLET EXCEEDS 10 FEET AS MEASURED FROM TOP OF GRATE TO INVERT, THE FOUNDATION IS TO BE INCREASED TO 12 INCHES. WHEN ROCK IS ENCOUNTERED, THE DEPTH OF THE FOUNDATION IS NOT TO BE INCREASED.
- MINIMUM WALL REINFORCEMENT FOR PRECAST INLETS TYPES A, B, C, E, D-1, D-2, AND B MODIFIED:

DEPTH BELOW TOP OF GRATE	HORIZONTAL REINF.	VERTICAL REINF.	WALL THK.
0' TO 10'-0"	#13 @ 10" C.C.	#13 @ 18" C.C.	6"
10'-1" TO 15'-0"	#13 @ 8" C.C.	#13 @ 18" C.C.	6"
15'-1" TO 20'-0"	#13 @ 6" C.C.	#13 @ 18" C.C.	6"

REINFORCEMENT SHOWN FOR PRECAST INLETS IS THE MINIMUM REQUIRED. ADDITIONAL REINFORCEMENT FOR HANDLING IS THE RESPONSIBILITY OF THE CONTRACTOR.

ALTERNATE REINFORCEMENT

DEPTH BELOW TOP OF GRATE	REINFORCEMENT
0' TO 10'-0"	WWF 3 x 6 W6 WIRES SPACED AT 3" TO RUN HORIZONTAL IN ALL CASES.
10'-1" TO 15'-0"	WWF 3 x 6 W6 ADD #10 REINFORCEMENT STEEL @ 18" HORIZONTAL.
15'-1" TO 20'-0"	WWF 3 x 6 W6 ADD #10 REINFORCEMENT STEEL @ 9" HORIZONTAL OR ADD #13 REINFORCEMENT STEEL AT 15" HORIZONTAL.
- DIMENSIONS, WEIGHTS, AND OTHER CRITERIA SHOWN ON THESE DETAILS ARE FOR CLASS 35B CAST IRON.
- PAY ITEM INCLUDES EXCAVATION, SUBBASE, CLASS B CONCRETE (ROADWAY), HMA COURSES, AND REMOVAL AND RESTORATION OF EXISTING PIPES TO COMPLETE THE INSTALLATION OF INLET OR MANHOLE.
- REINFORCEMENT STEEL IS IN METRIC UNITS
- ALL INLETS, REGARDLESS OF TYPE, SHALL HAVE PERMANENT WORDING CAST INTO THE GRATE AND/OR CURB PIECE STATING "NO DUMPING, DRAINS TO WATERWAYS" OR OTHERWISE APPROVED BY THE RE.

CD-602-1.6

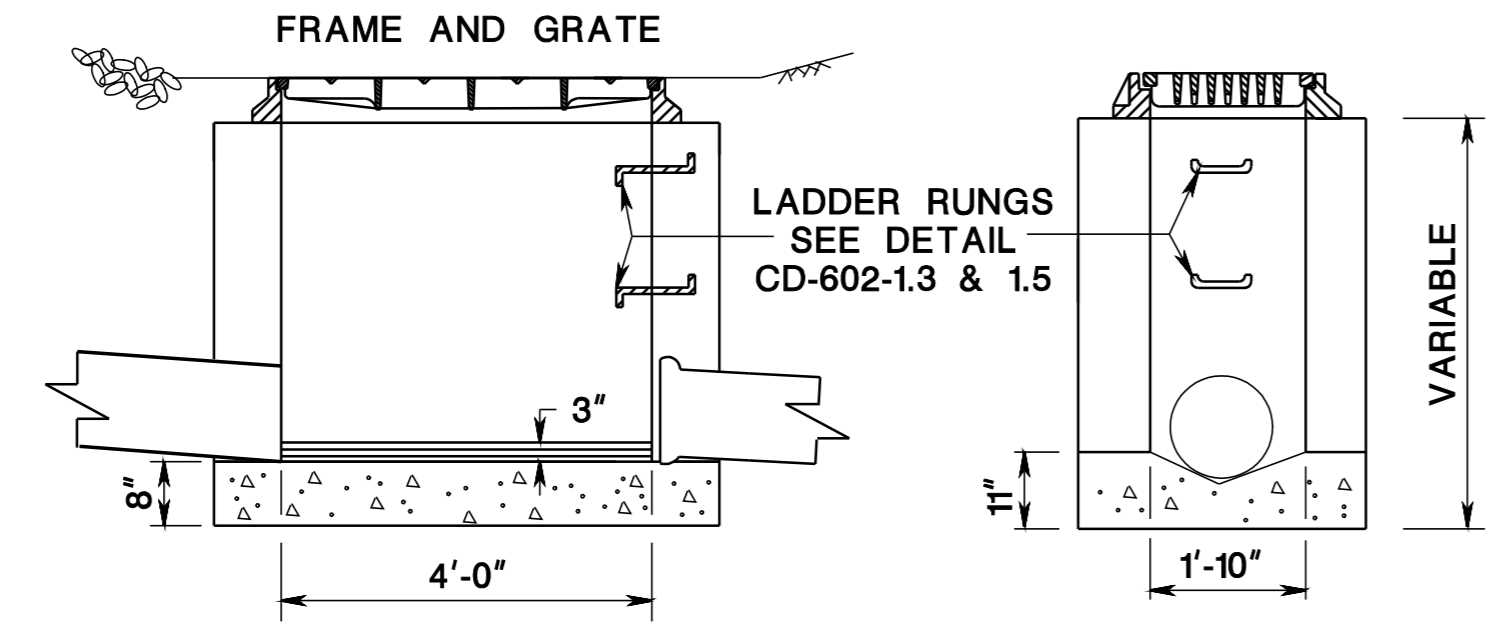
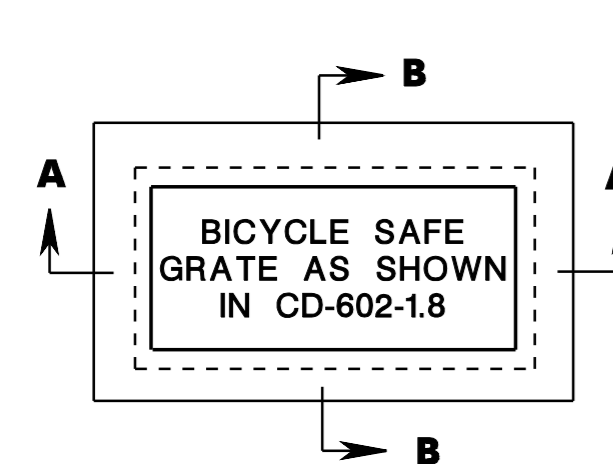
INLET GENERAL DETAILS

N.T.S.

CD-602-1

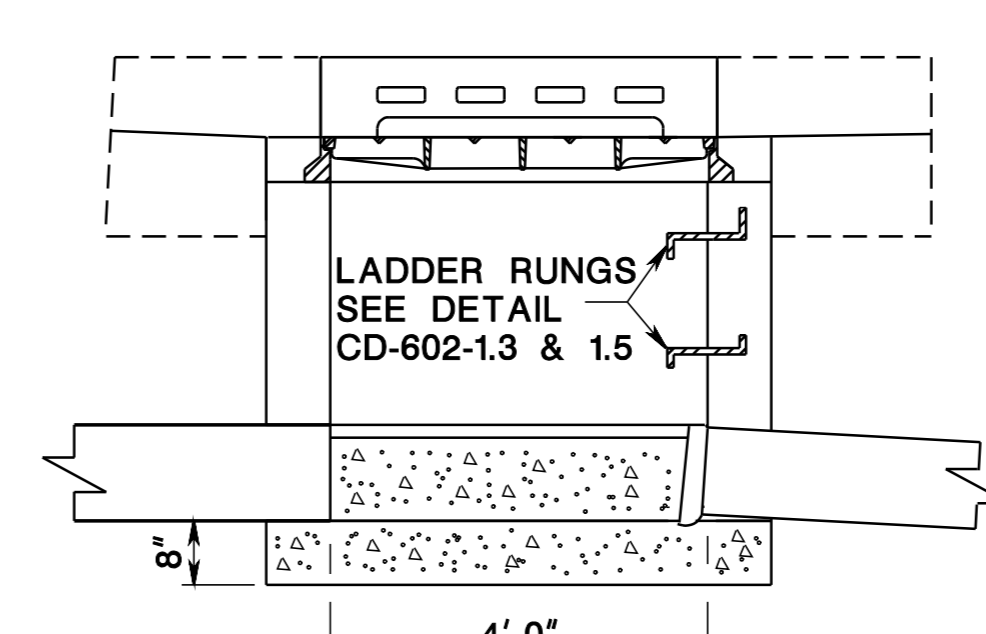
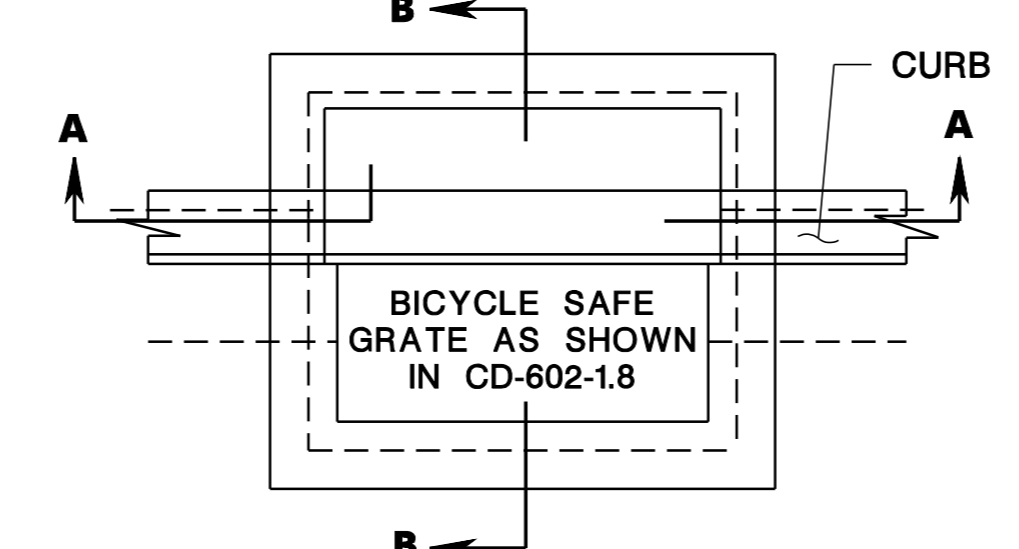
NEW JERSEY DEPARTMENT OF TRANSPORTATION

CONSTRUCTION DETAILS

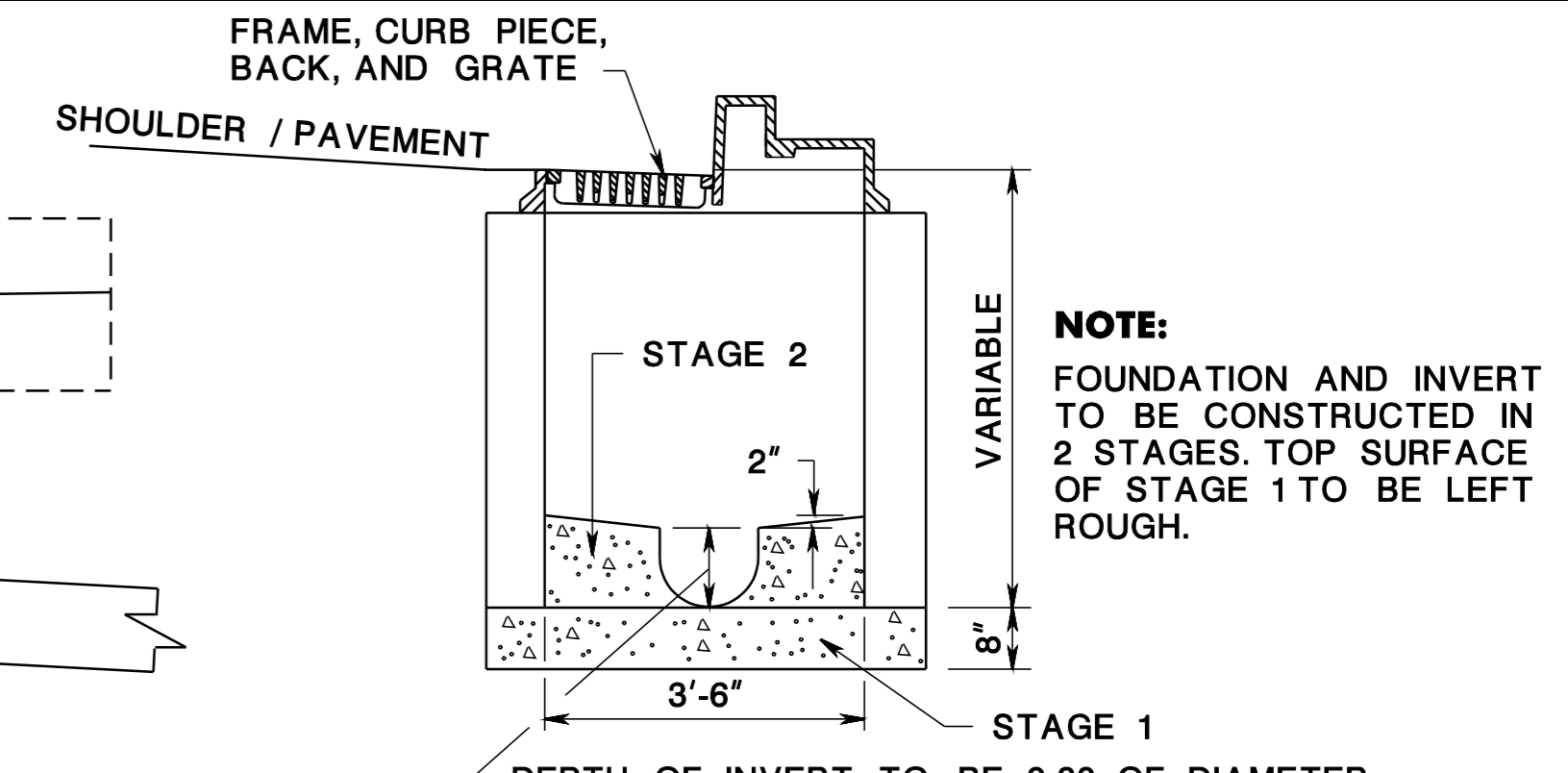


SECTION A-A
SECTION B-B
INLET TYPE A

CD-602-2.1



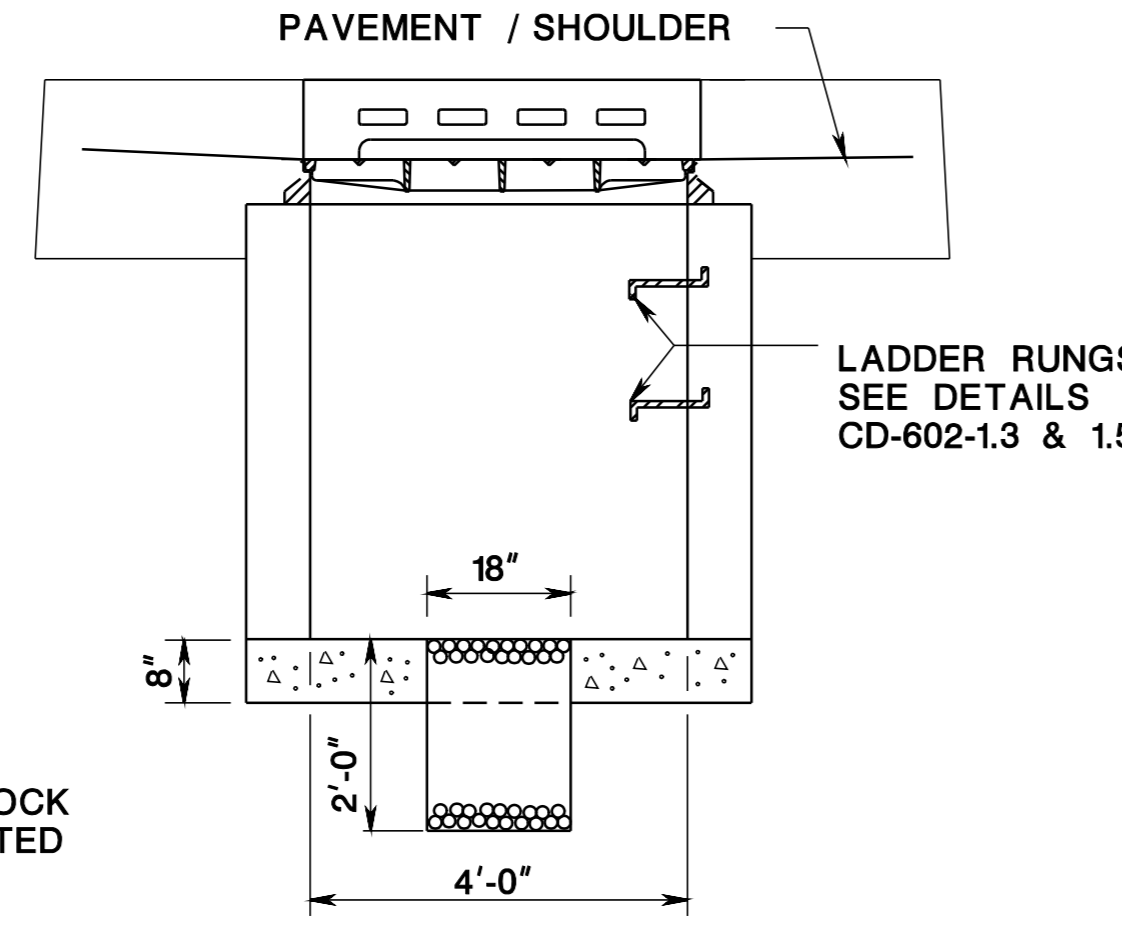
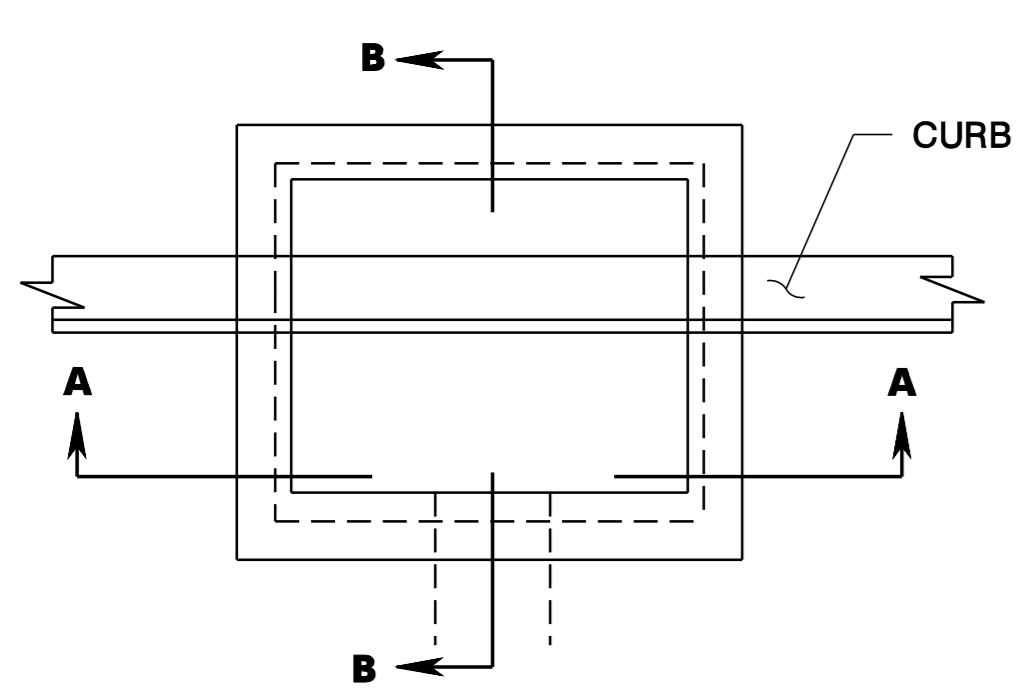
SECTION A-A
INLET TYPE B



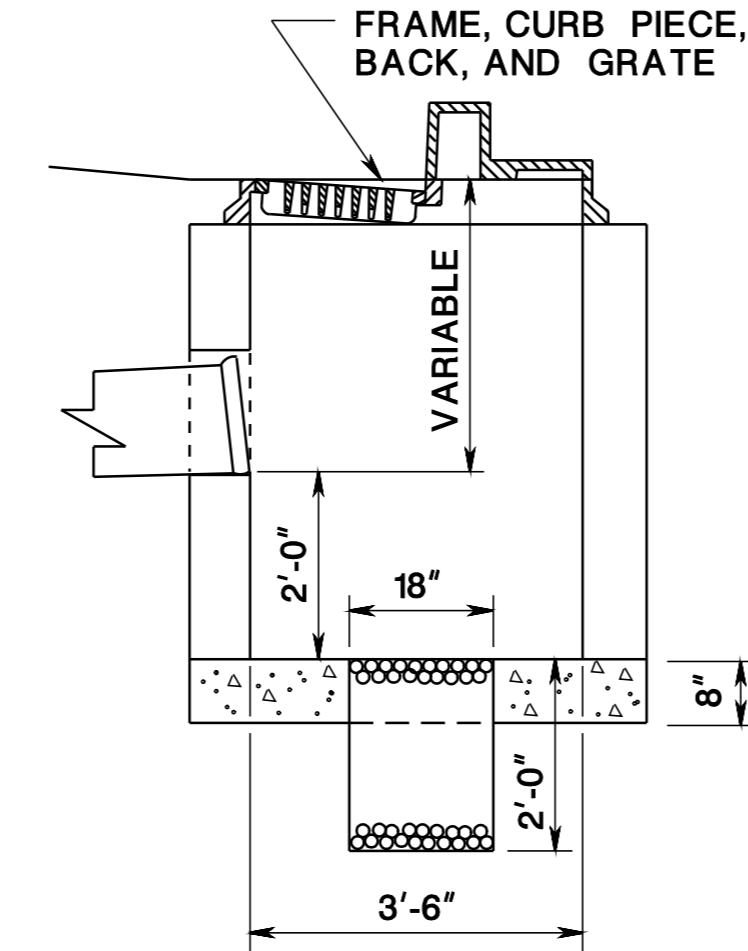
NOTE:
FOUNDATION AND INVERT TO BE CONSTRUCTED IN 2 STAGES. TOP SURFACE OF STAGE 1 TO BE LEFT ROUGH.

DEPTH OF INVERT TO BE 0.80 OF DIAMETER OF THE MAIN PIPE THROUGH THE INLET.

CD-602-2.2



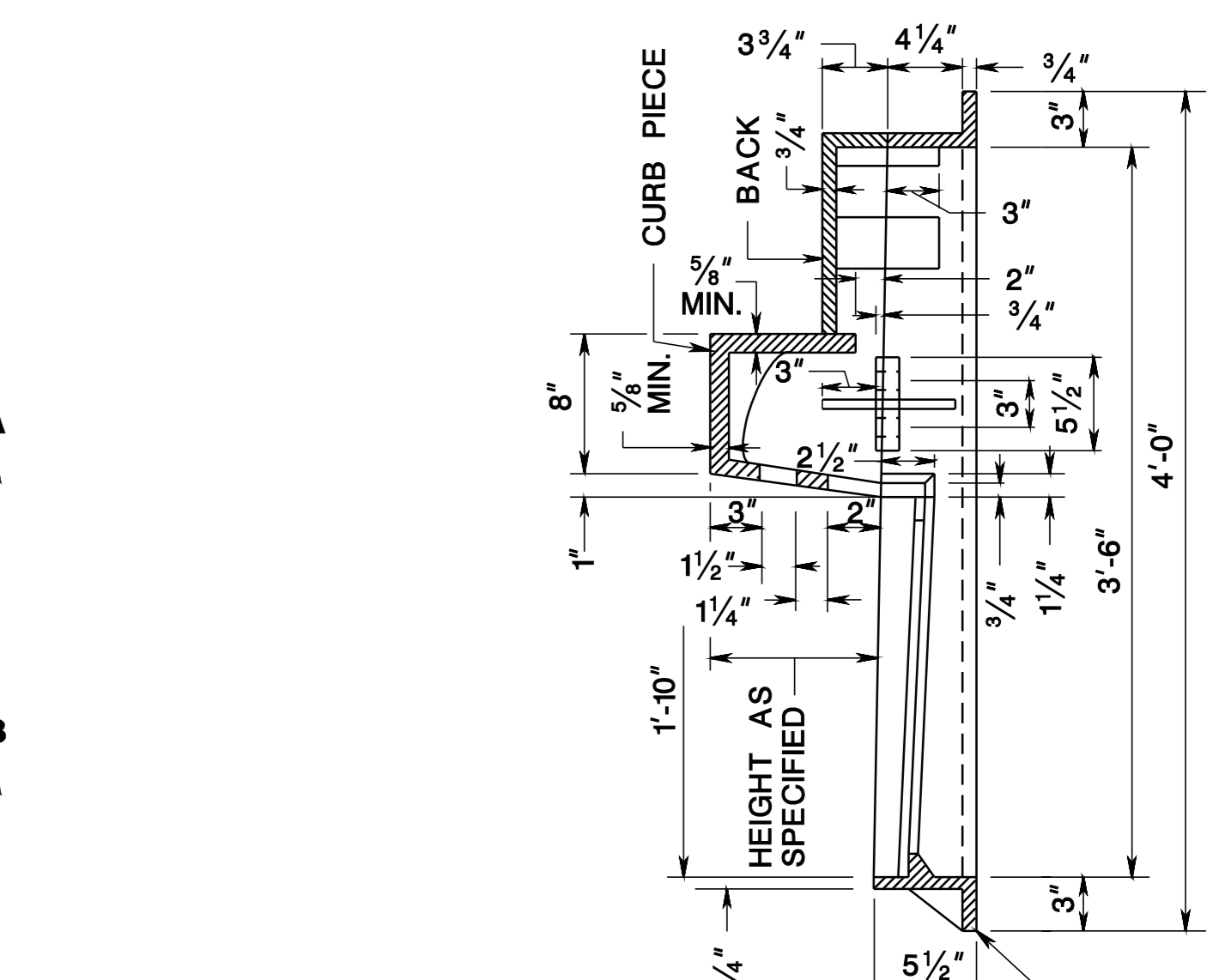
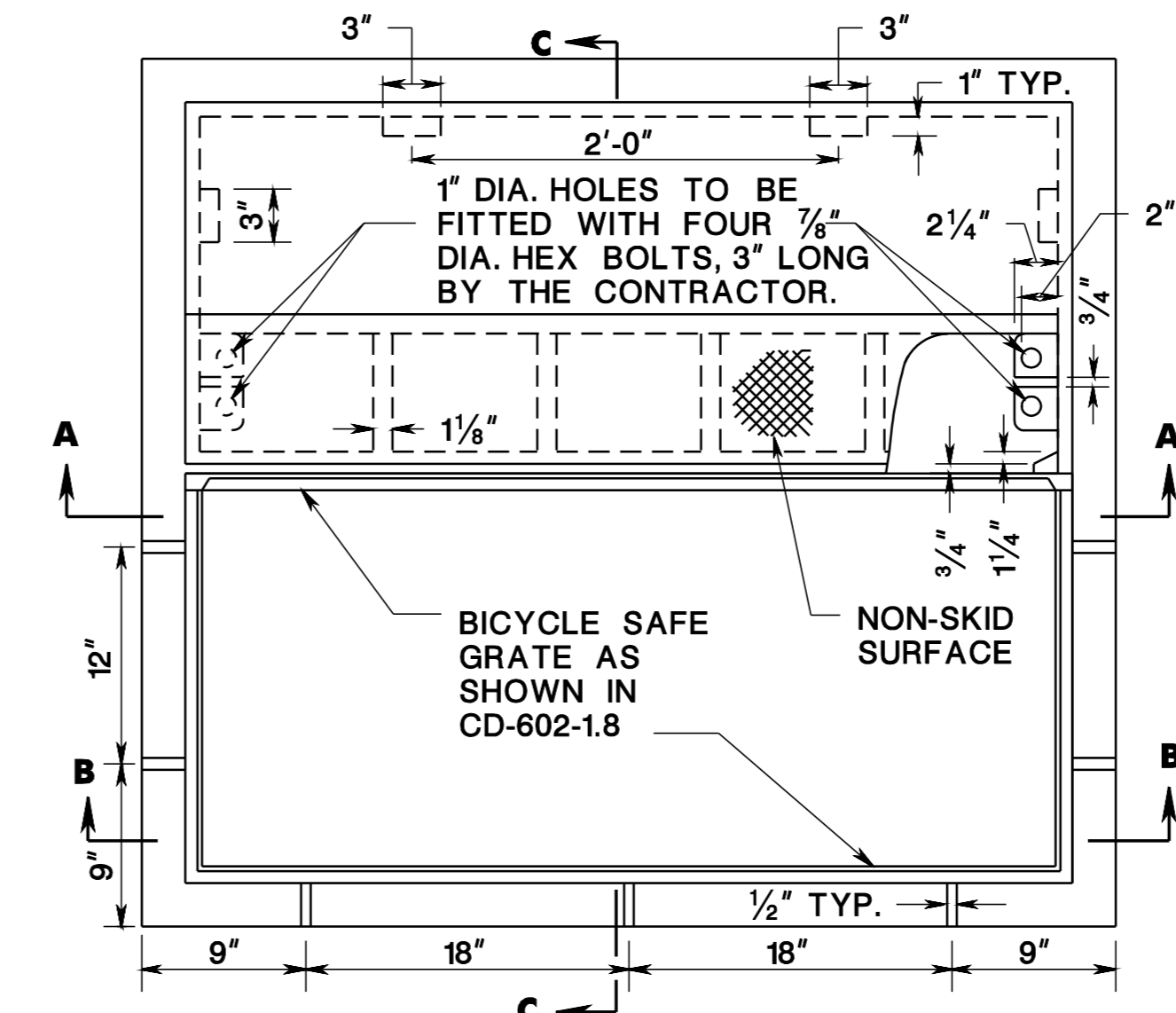
SECTION A-A
INLET TYPE C



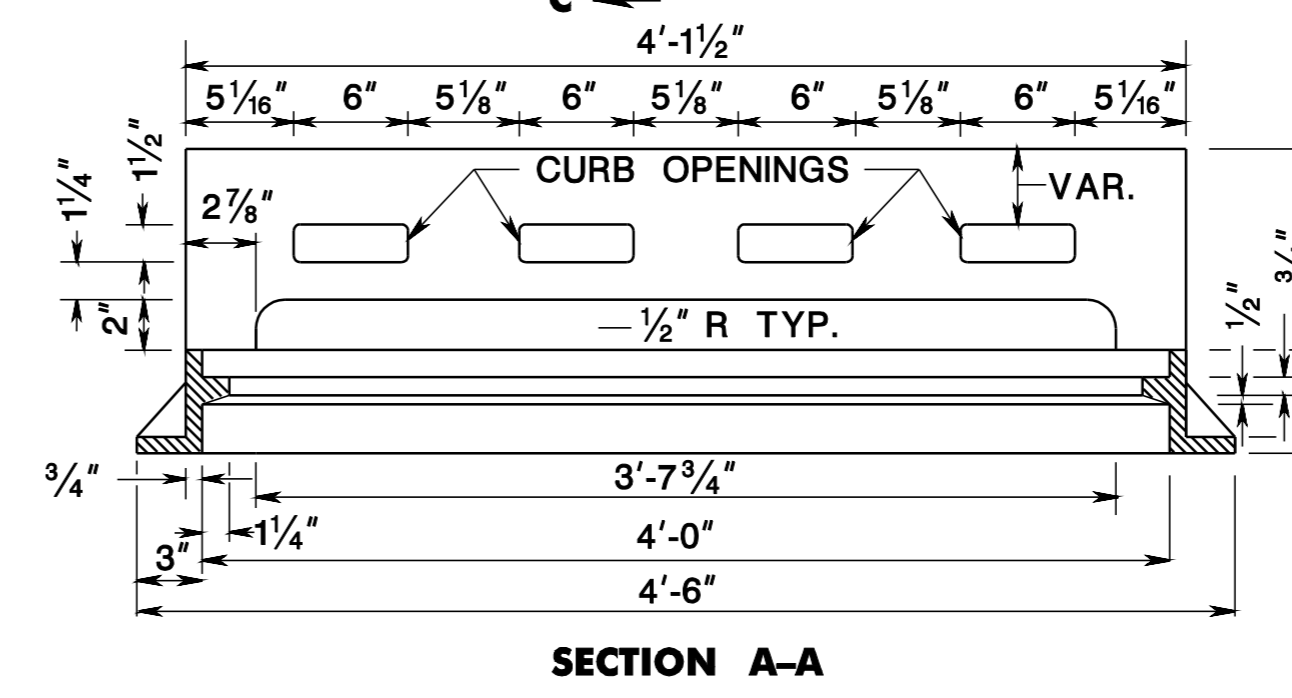
SECTION B-B

CD-602-2.3

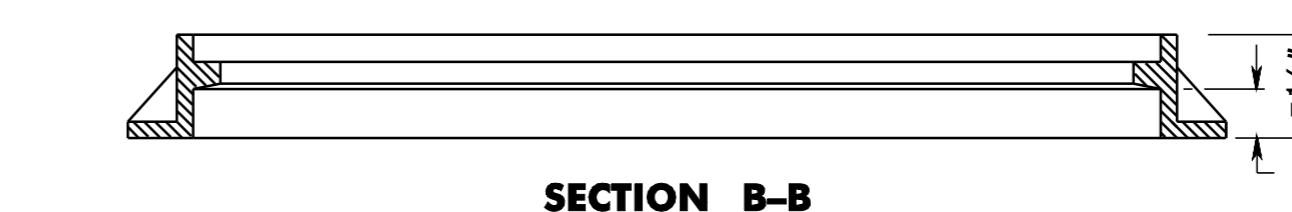
NOTE:
LEAVE ALTERNATE VERTICAL JOINTS OF BRICK OR BLOCK OPEN IN THE FIVE LOWER COURSES. WHEN CONSTRUCTED OF CONCRETE, CONSTRUCT A LEACHING BASIN 18" x 18" x 2'-0" DEEP OF COARSE AGGREGATE #57.



WEIGHTS CLASS 35B
WEIGHT OF GRATE = 300 ± 15 LBS
WEIGHT OF FRAME = 312#
WEIGHT OF BACK = 120#
WEIGHT OF CURB PIECE
6" = 125#
8" = 167#
10" = 209#
12" = 251#



SECTION A-A

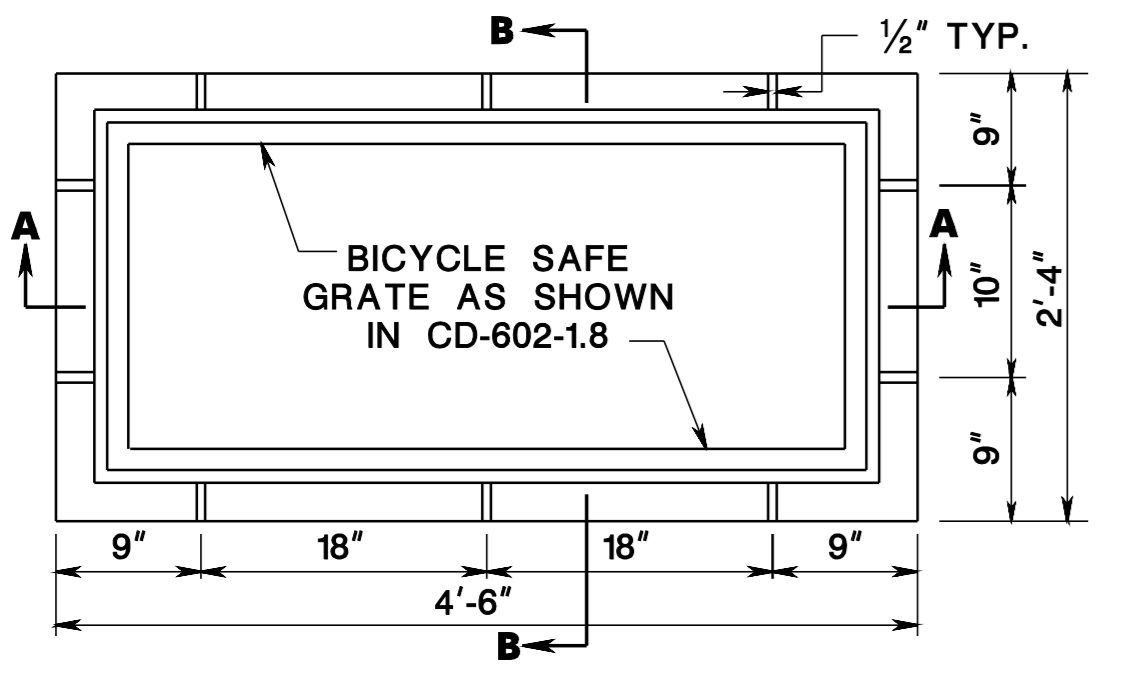


SECTION B-B

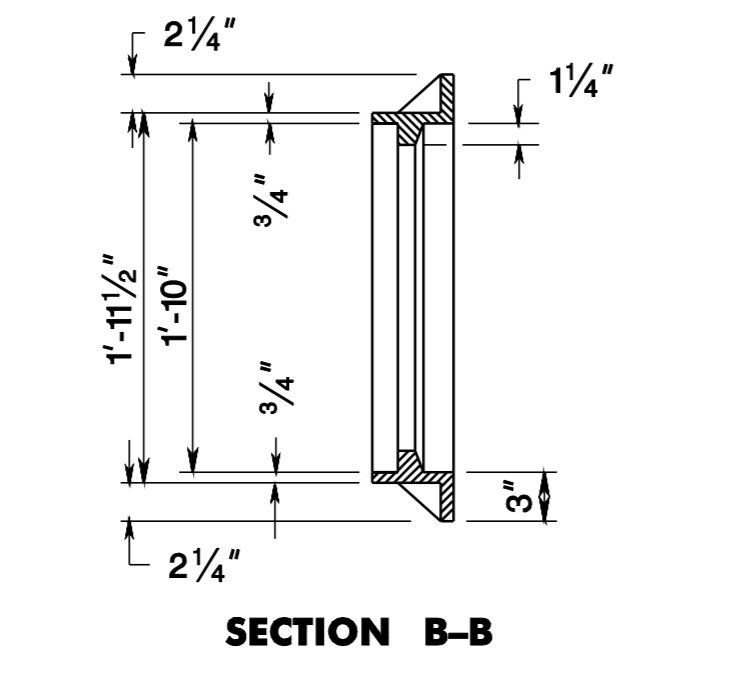
NOTES:
1. SEE ALTERNATE BACK PLATE DETAIL CD-602-2.5
2. SEE GENERAL NOTE 9, CD-602-1.6
3. THE CLEAR SPACE IN THE CURB OPENING OR EACH INDIVIDUAL CLEAR SPACE, IF THE CURB OPENING HAS TWO OR MORE CLEAR SPACES, MUST HAVE AN AREA OF NO MORE THAN SEVEN (7.0) SQUARE INCHES, OR BE NO GREATER THAN TWO (2.0) INCHES ACROSS THE SMALLEST DIMENSION.
4. FOR 2" CURB PIECE, USE DRIVEWAY ACCESS PLATE - SEE CD-602-2A.1

INLET TYPE B AND TYPE C CASTING

CD-602-2.6



SECTION A-A

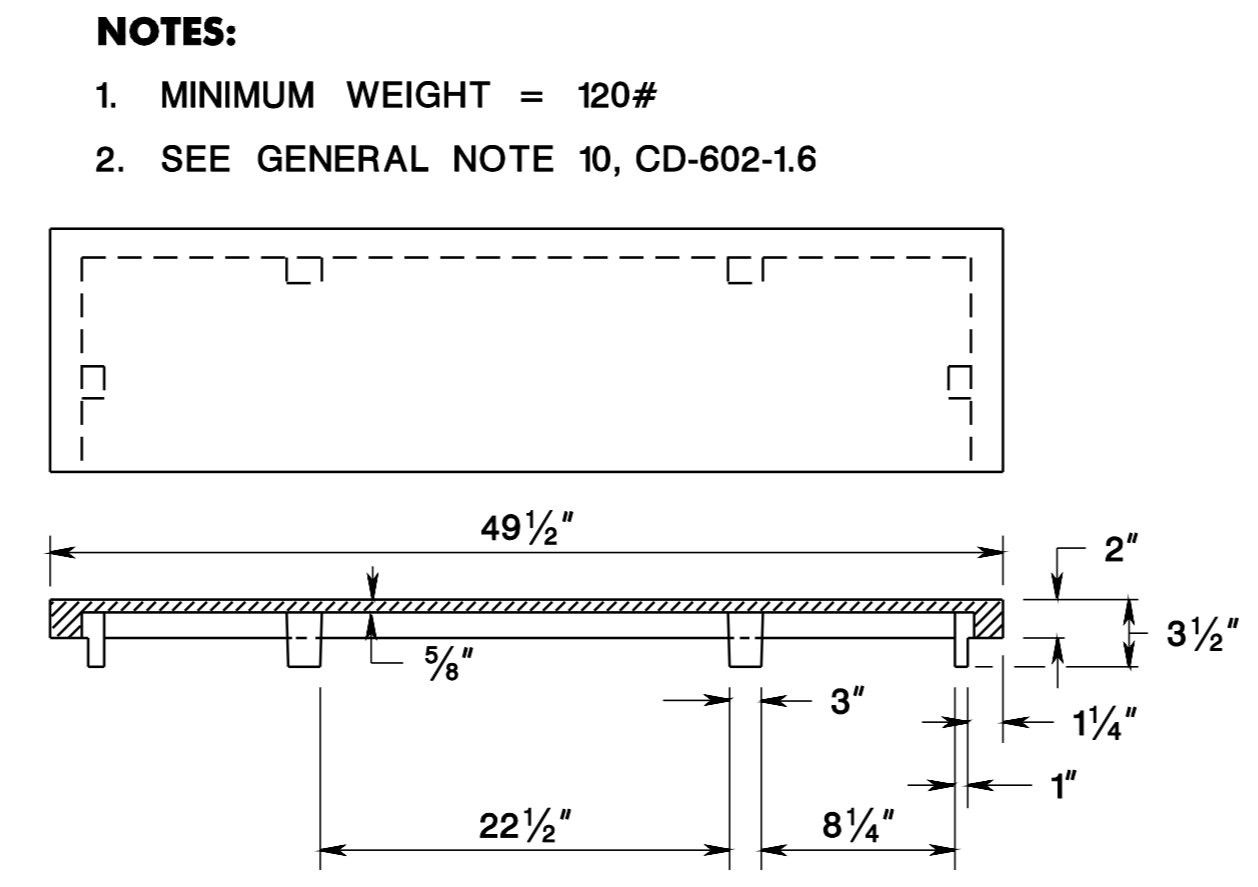


SECTION B-B

WEIGHTS
WEIGHT OF FRAME = 240#
WEIGHT OF GRATE = 300 ± 15 LBS

INLET TYPE A CASTING

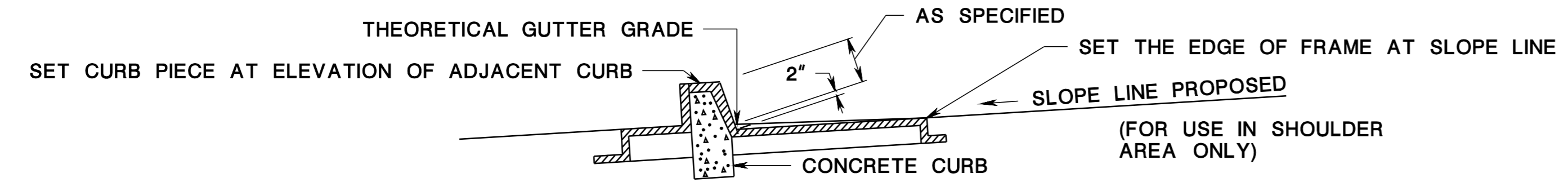
CD-602-2.4



NOTES:
1. MINIMUM WEIGHT = 120#
2. SEE GENERAL NOTE 10, CD-602-1.6

ALTERNATE BACK PLATE

CD-602-2.5



METHOD OF SETTING CASTING FOR B TYPE INLET WHERE CURB PIECE HEIGHT IS 2" GREATER THAN CURB FACE

CD-602-2.7

GENERAL NOTE:
1. SEE GENERAL NOTES AT CD-602-1.6.
CD-602-2.8

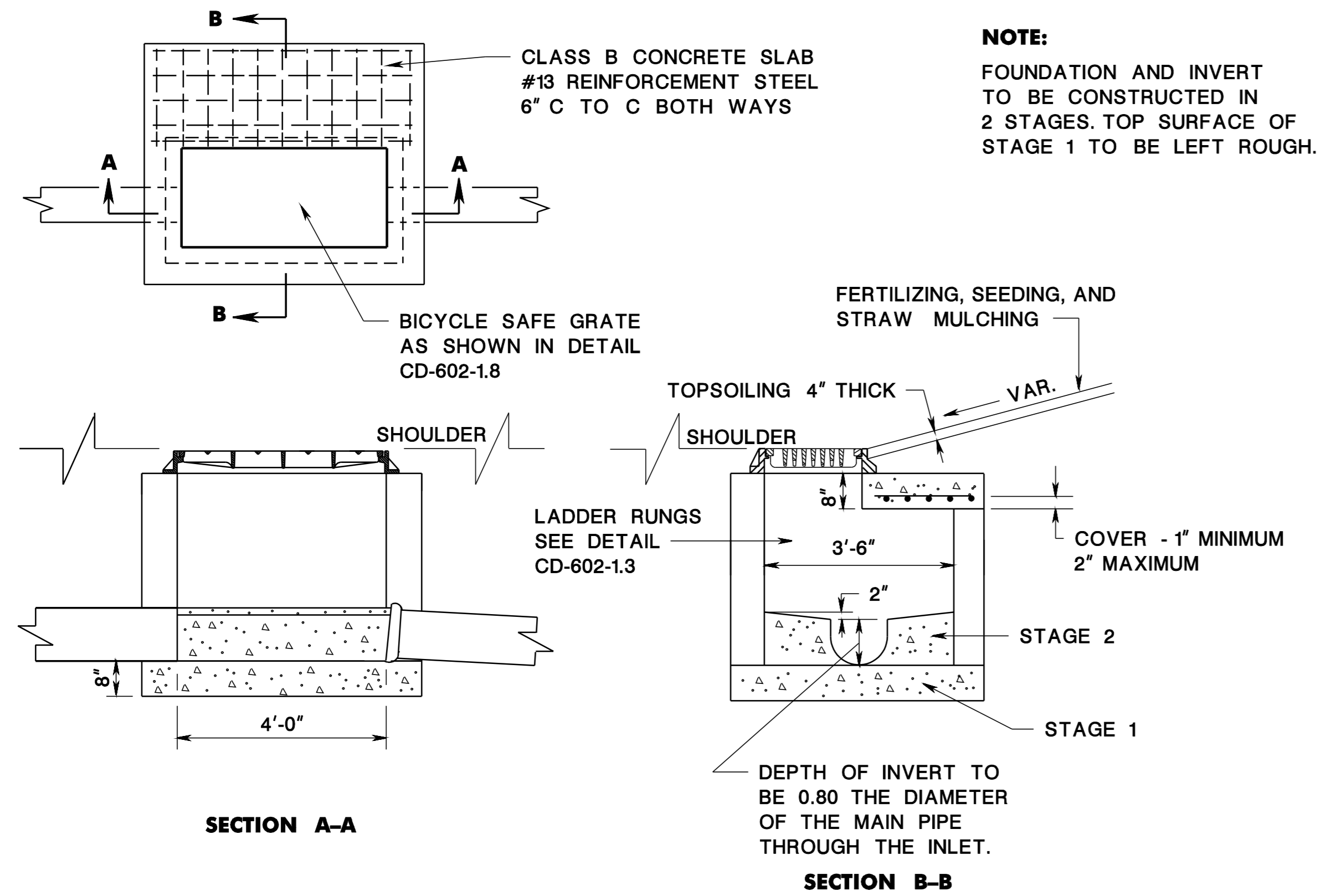
INLETS, TYPE A, B, & C
N.T.S.

CD-602-2

NEW JERSEY DEPARTMENT OF TRANSPORTATION

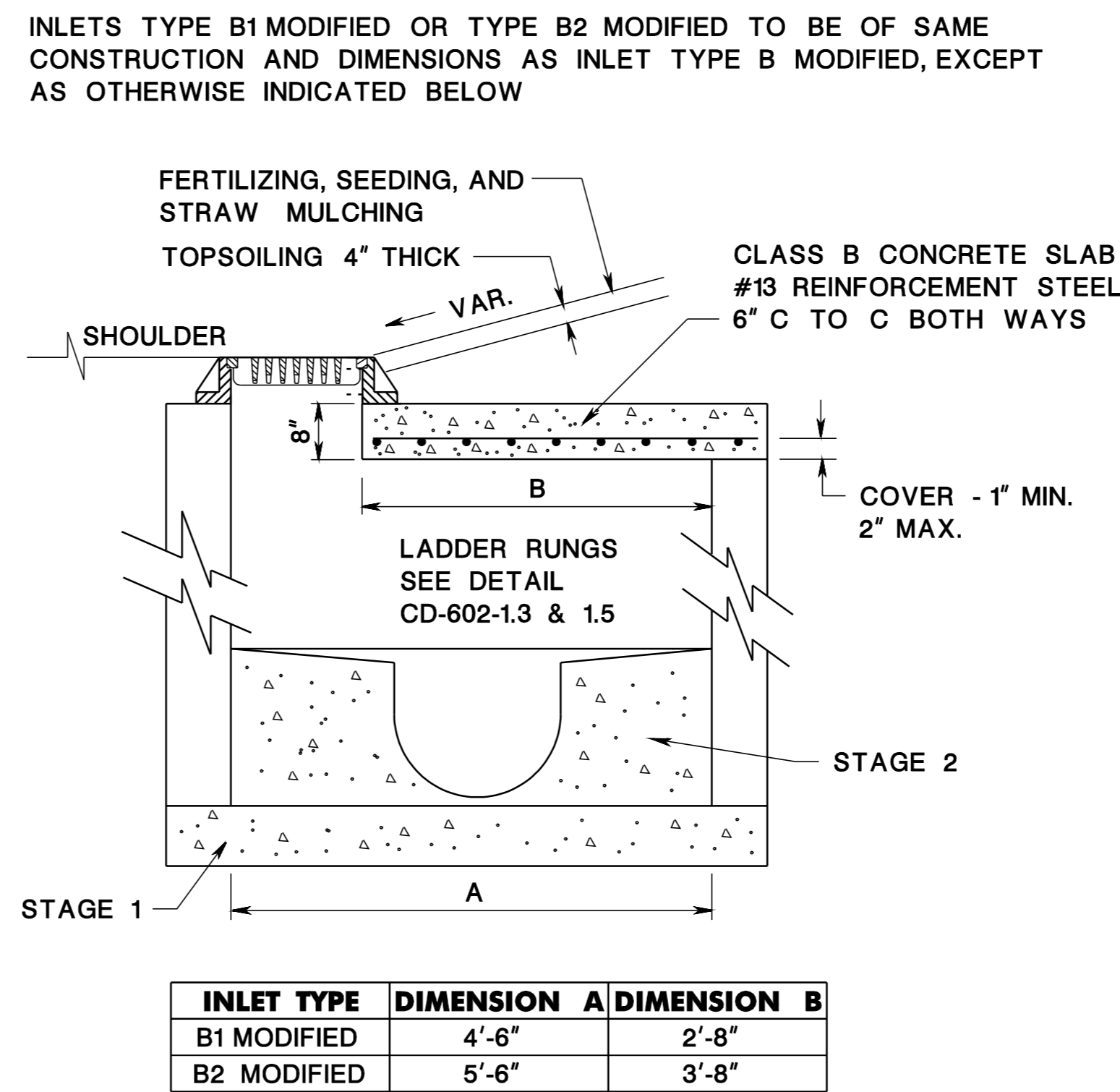
CONSTRUCTION DETAILS

pen table= \\njdotprfw\projects\jdoteng\jdoteng\tbls\roadway\details.tbl
scale= 30.0000000:1.0000000
D= 000910722
date= 11-FEB-2025 10:26
BDC24D-04 ADDED SUB DETAILS CD602-2.8
REMOVED EXISTING BULLET 4 ON CD 602-2.6
REVISED BULLET NUMBERING TO SHOW
BULLET NO. 5 AS BULLET NO. 4
BDC18D-05 ADDED NOTE 5 ON CD-602-2.6
BDC18D-05 ORIGINAL SHEET



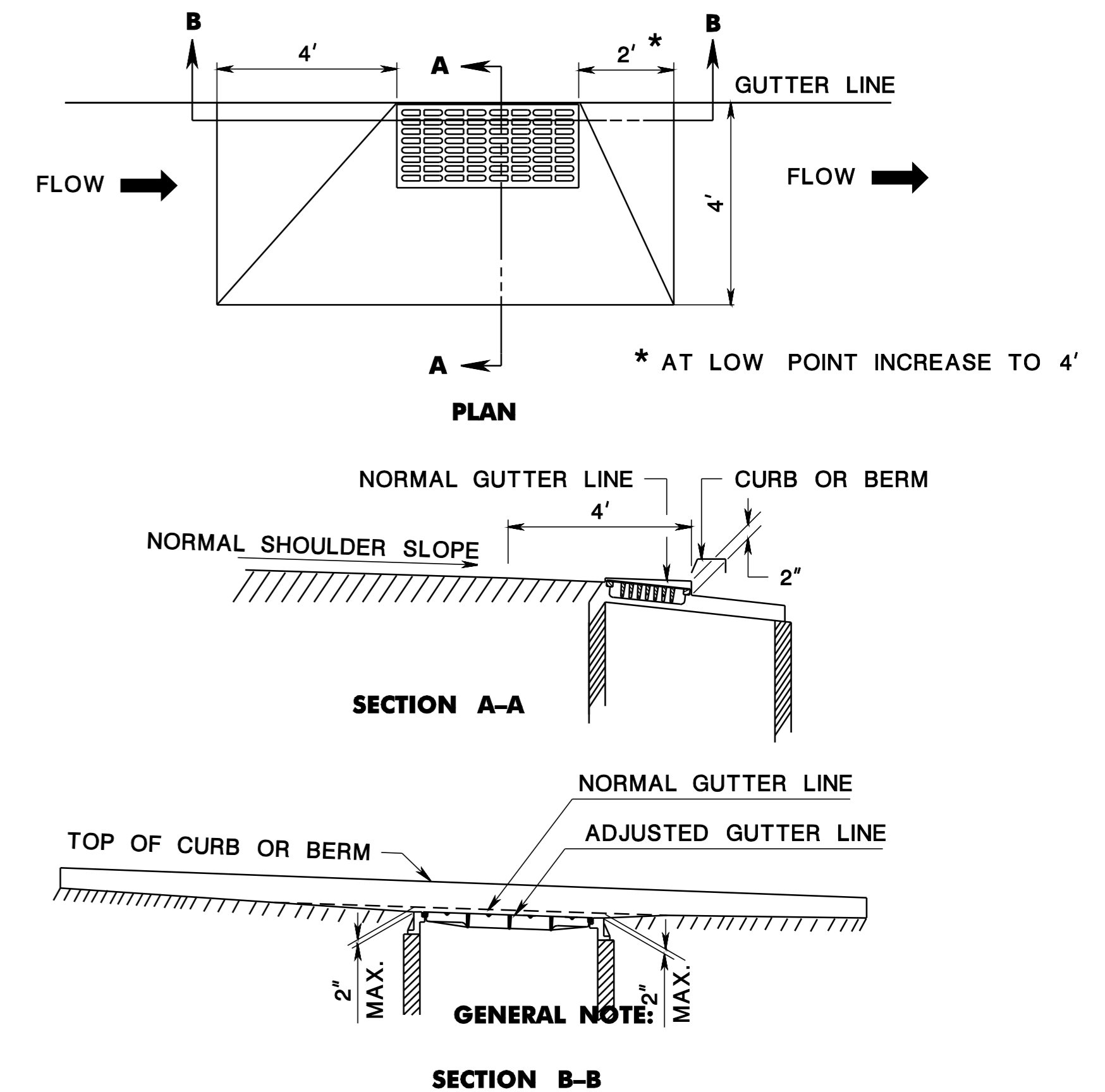
INLET, TYPE B MODIFIED

CD-602-3.1



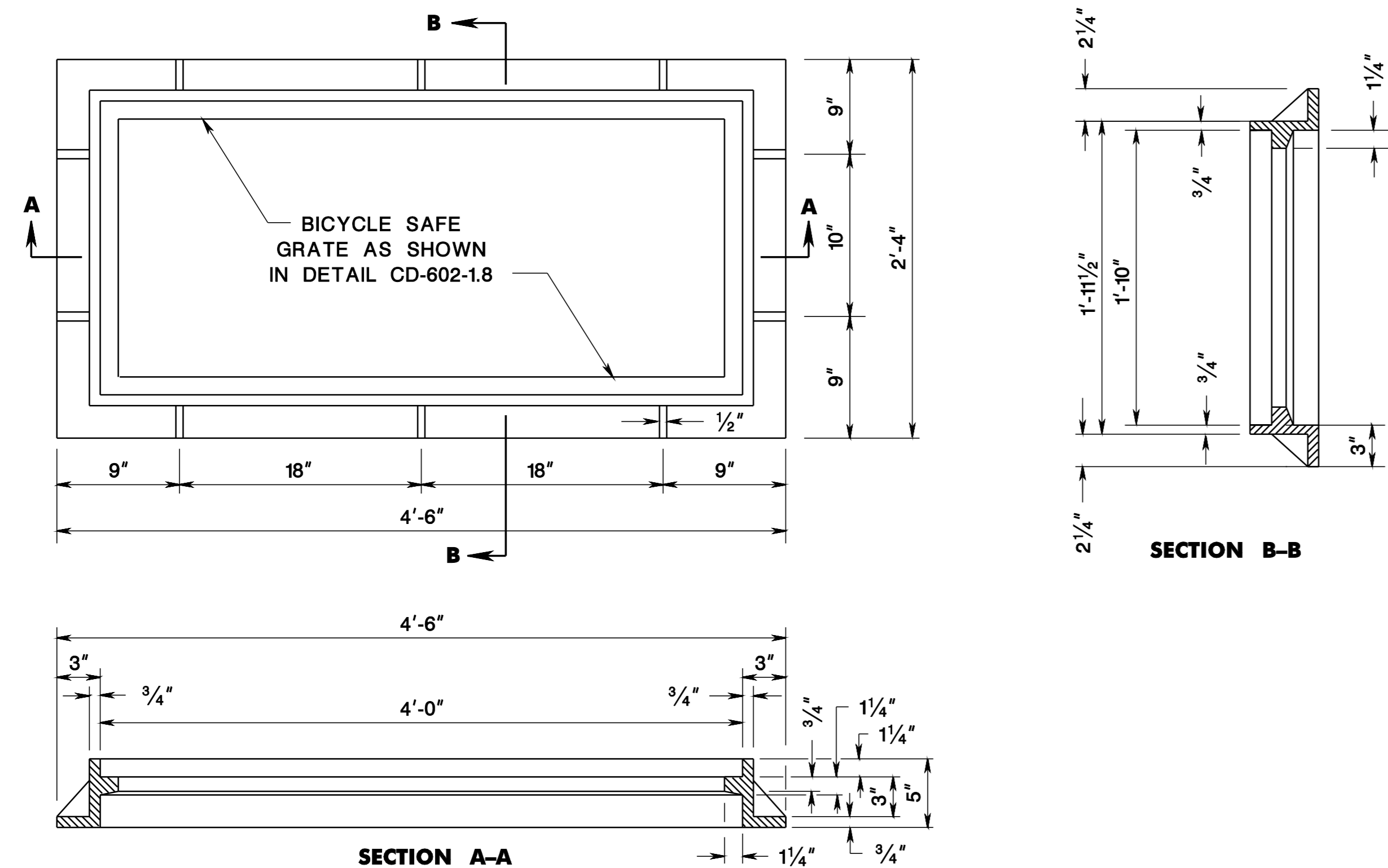
INLETS, TYPE B1 MODIFIED AND TYPE B2 MODIFIED

CD-602-3.2



METHOD OF DEPRESSING INLETS AT SHOULDERS

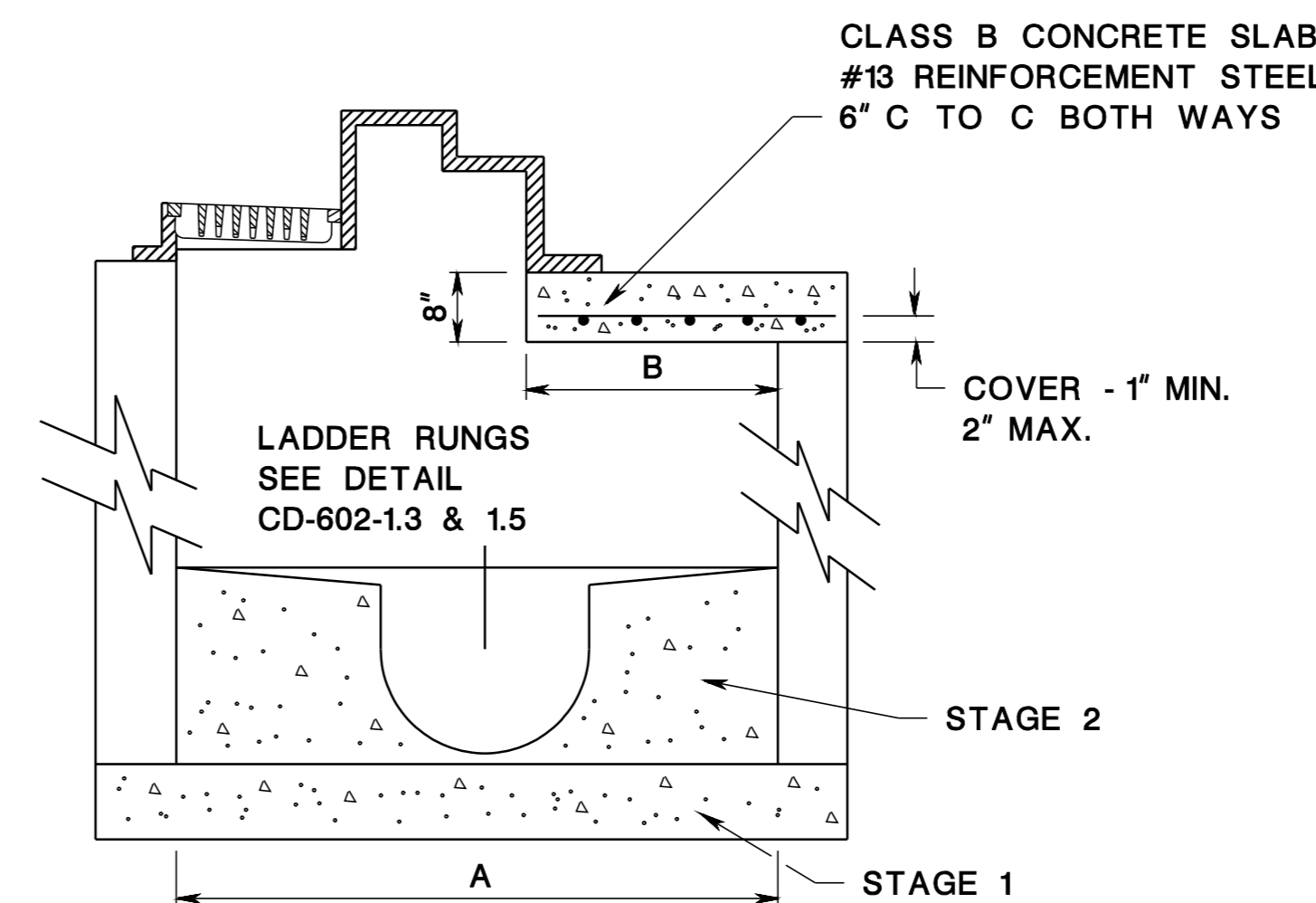
CD-602-3.3



FRAME TO BE USED FOR INLET, TYPE B MODIFIED

CD-602-3.4

INLETS TYPE B1 OR TYPE B2 TO BE OF SAME CONSTRUCTION AND DIMENSIONS AS INLET TYPE B, EXCEPT AS OTHERWISE INDICATED BELOW.



INLET TYPE	DIMENSION A	DIMENSION B
B1	4'-6"	1'-0"
B2	5'-6"	2'-0"

CONSTRUCT FOUNDATION AND INVERT IN TWO STAGES. LEAVE TOP SURFACE OF STAGE 1 ROUGH.

INLETS, TYPE B1 AND TYPE B2

CD-602-3.5

GENERAL NOTE:
1. SEE GENERAL NOTES AT CD-602-1.6.

CD-602-3.6

INLETS, TYPE B1, B2, & B, B1, & B2 MODIFIED
N.T.S.

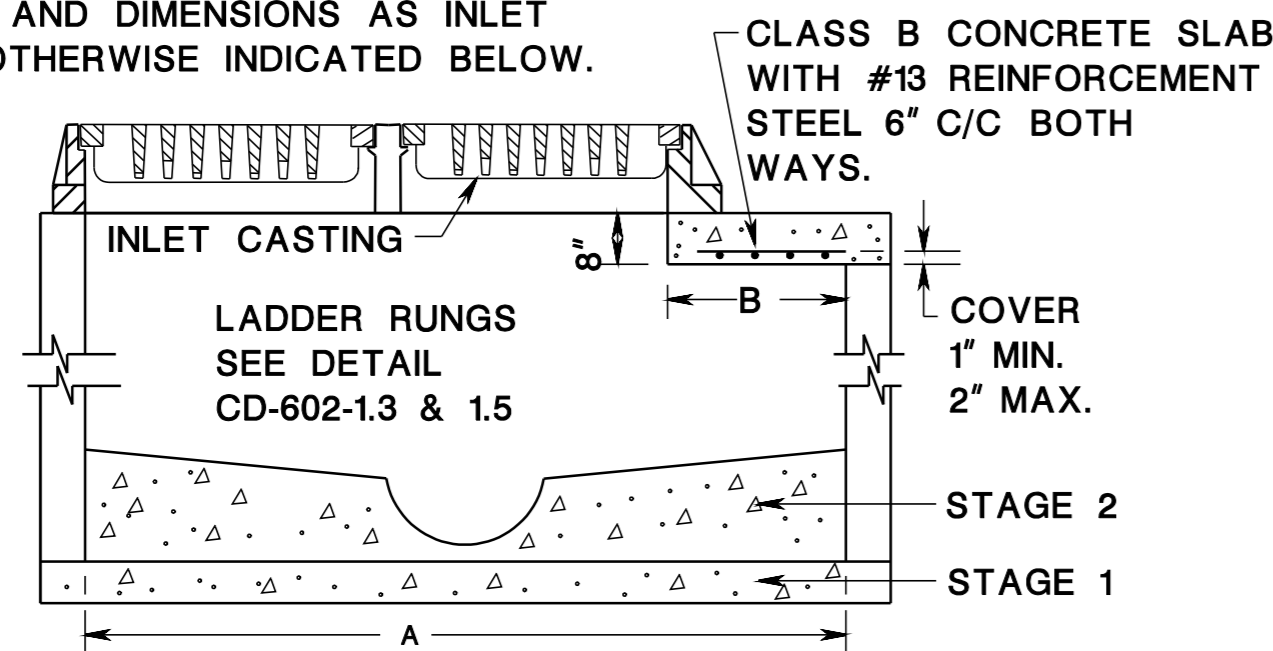
CD-602-3

NEW JERSEY DEPARTMENT OF TRANSPORTATION

CONSTRUCTION DETAILS

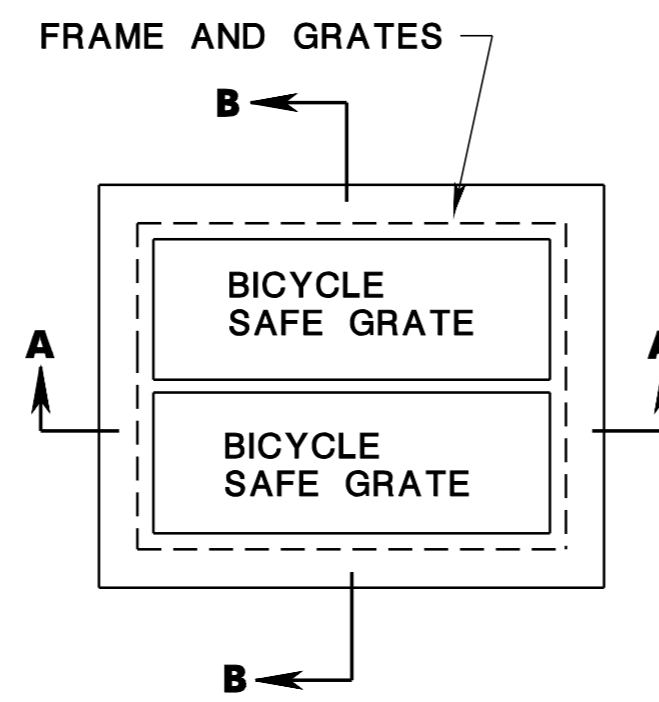
INLETS TYPE E1 AND TYPE E2 TO BE OF THE SAME CONSTRUCTION AND DIMENSIONS AS INLET TYPE E, EXCEPT AS OTHERWISE INDICATED BELOW.

NOTE:
CONSTRUCT FOUNDATION AND INVERT IN TWO STAGES. LEAVE TOP SURFACE OF STAGE 1 ROUGH.

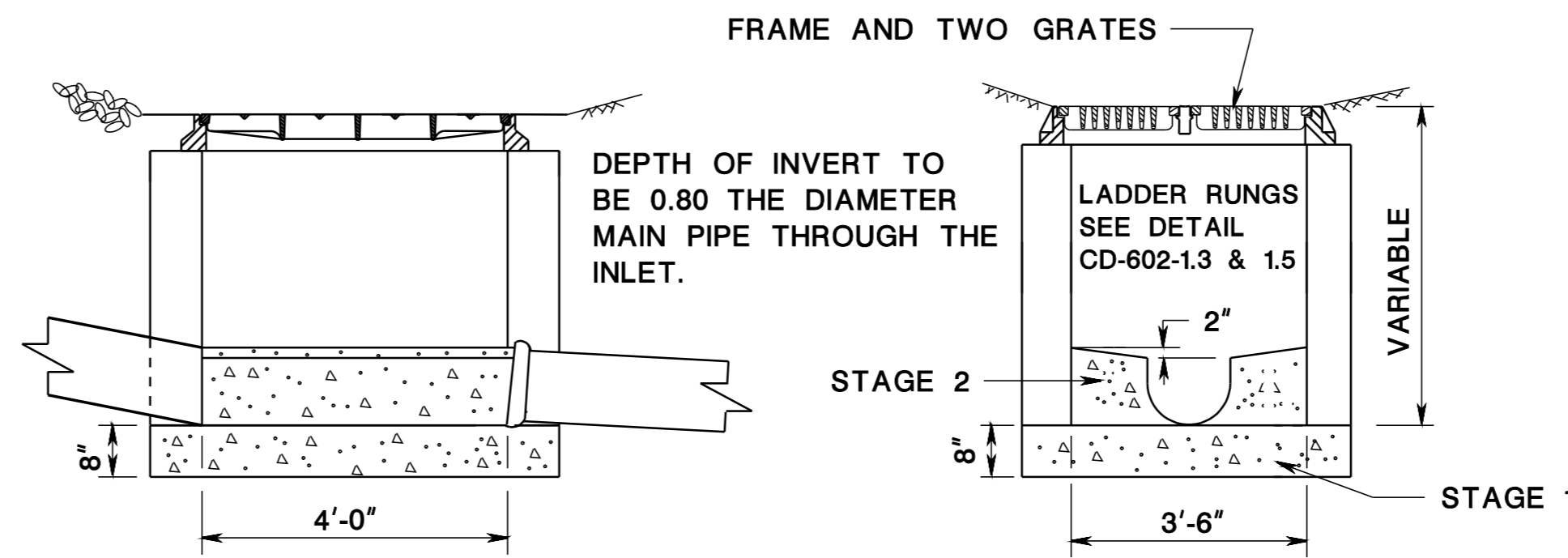


INLET TYPE	DIMENSION A	DIMENSION B
E 1	4'-6"	1'-0"
E 2	5'-6"	2'-0"

INLETS, TYPE E1 AND TYPE E2 CD-602-4.1



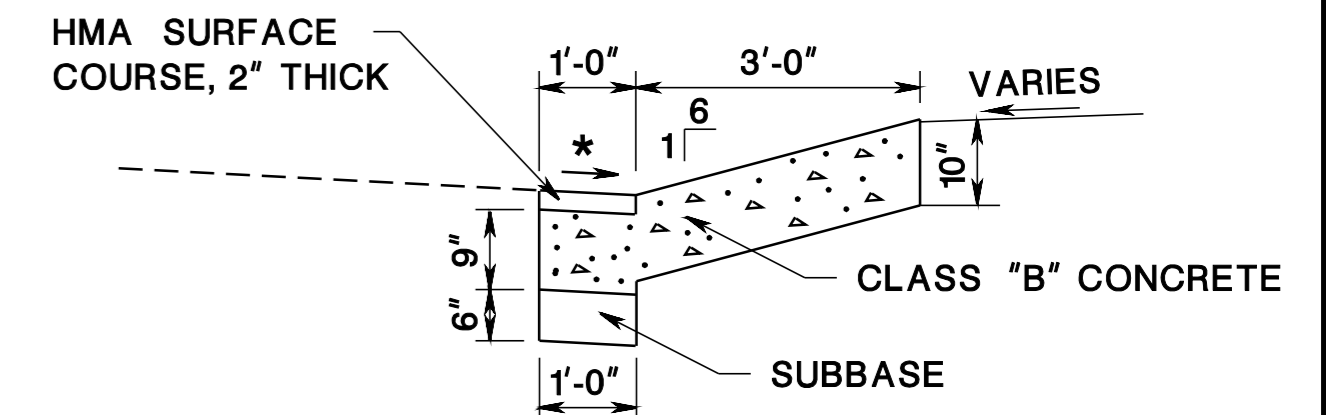
SECTION A-A



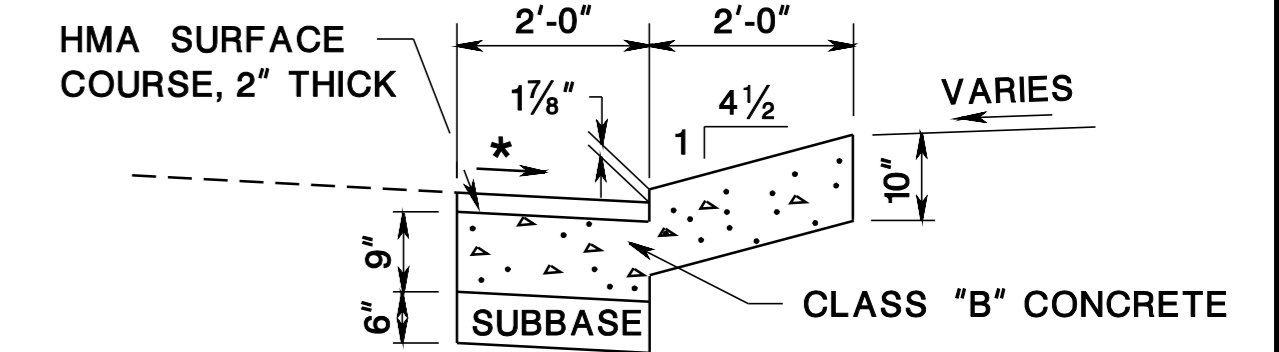
SECTION B-B

NOTE:
CONSTRUCT FOUNDATION AND INVERT IN 2 STAGES. LEAVE TOP SURFACE OF STAGE 1 ROUGH.

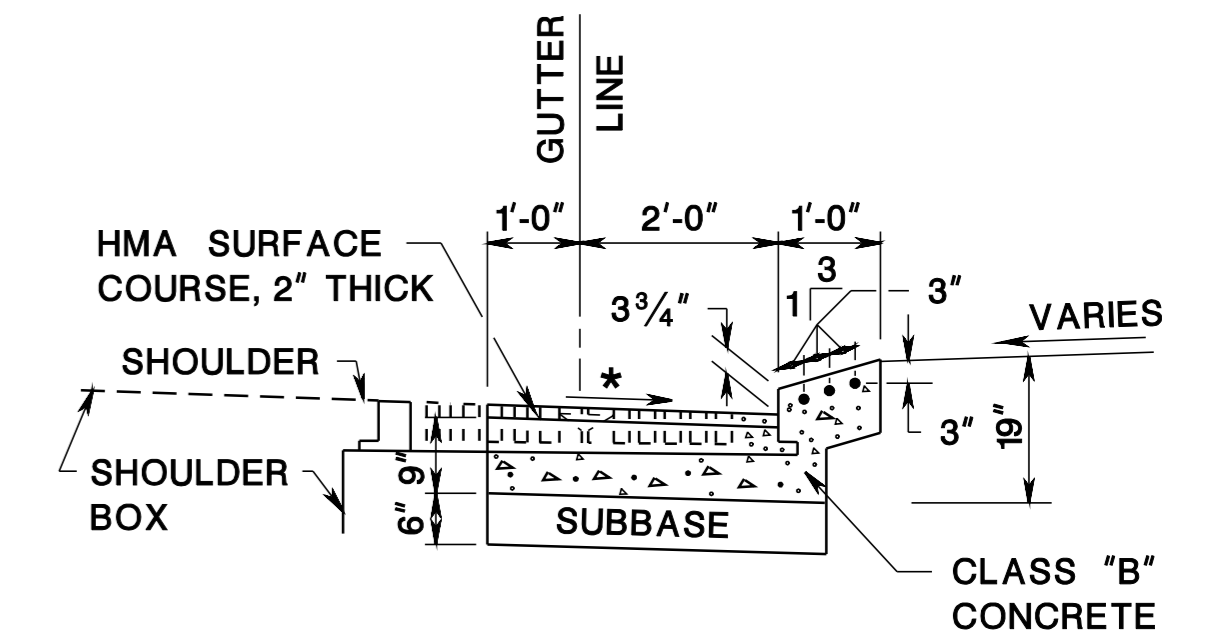
INLET, TYPE E CD-602-4.2



SECTION A-A



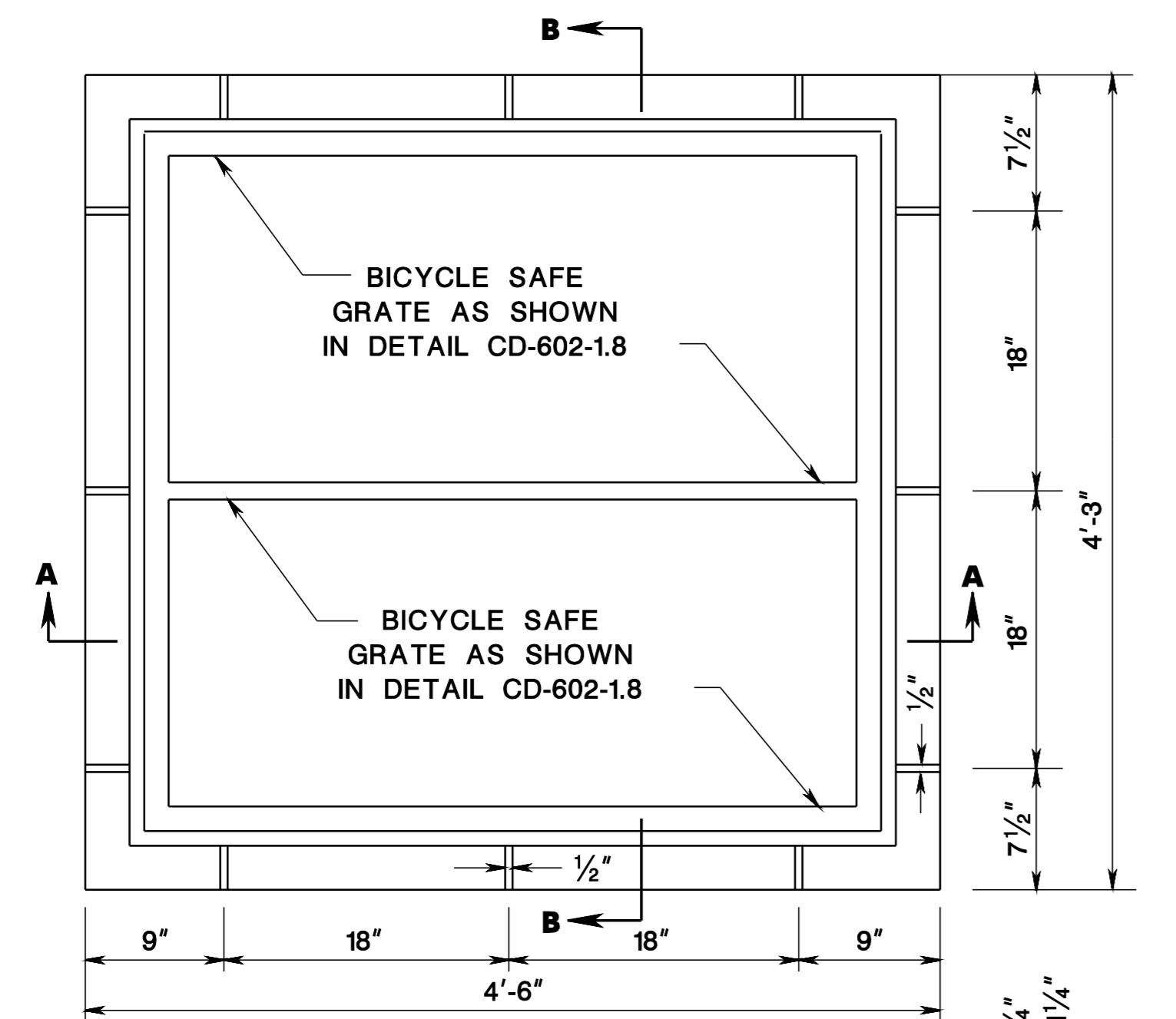
SECTION B-B



SECTION C-C

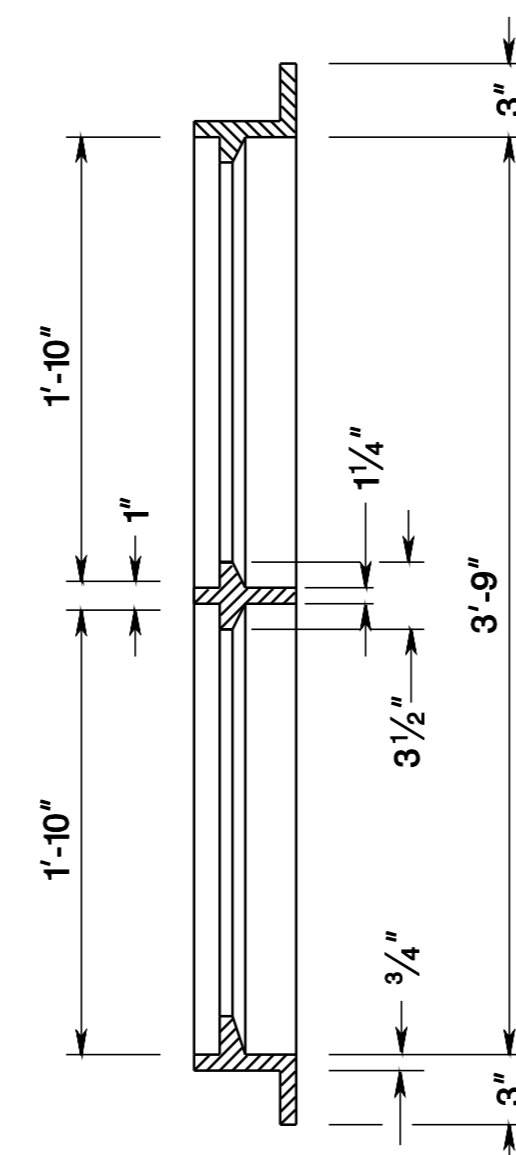
* SAME CROSS-SLOPE AS ADJOINING SHOULDER

INLET, TYPE ES CD-602-4.4



SECTION A-A

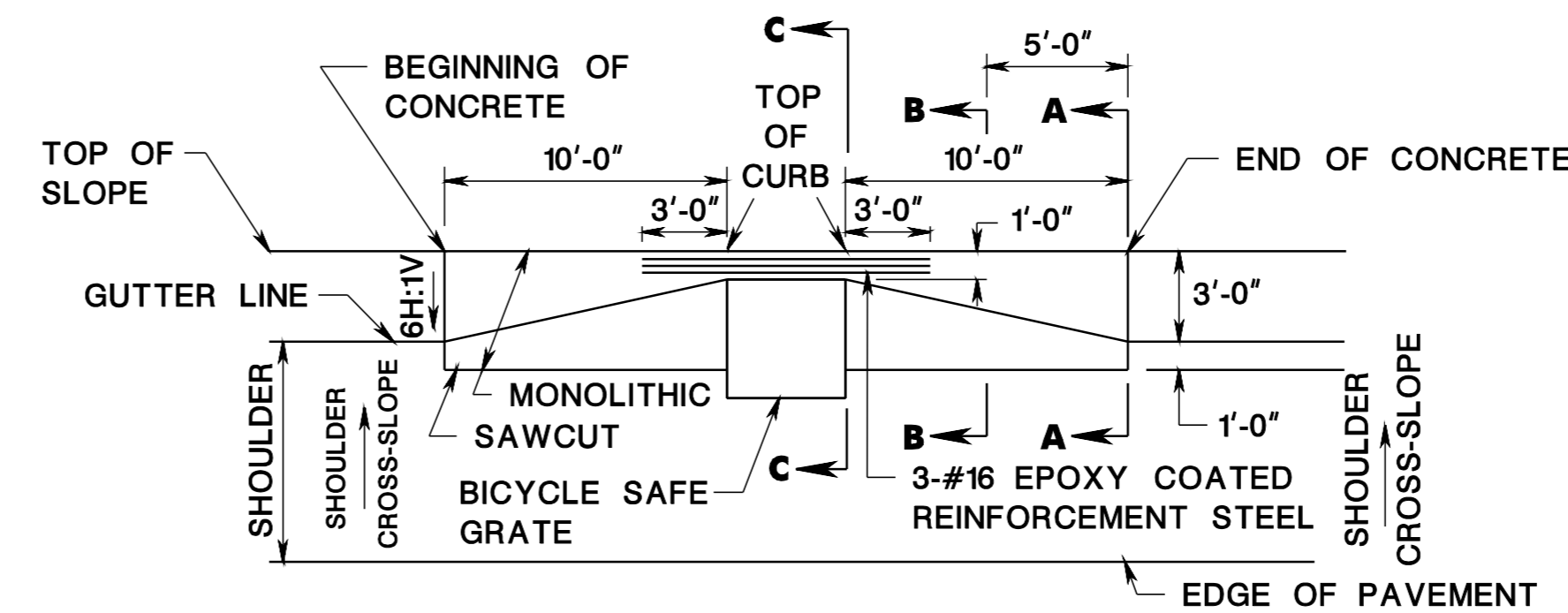
FRAME FOR INLET, TYPE E



SECTION B-B

WEIGHT OF FRAME = 435#
WEIGHT OF EACH GRATE = 300 ± 15 LBS

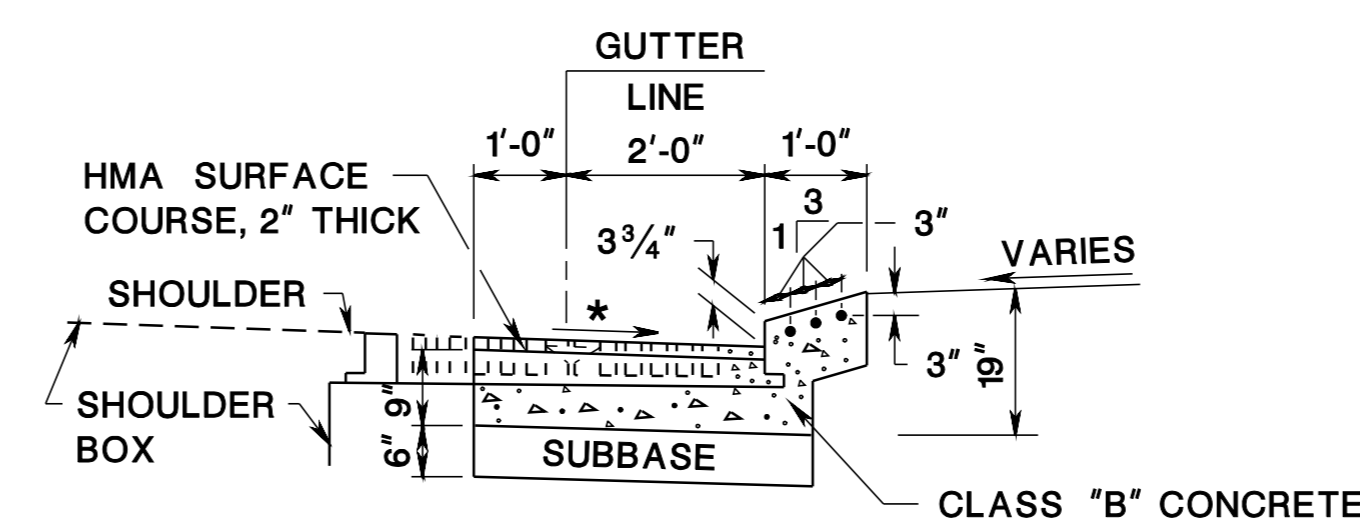
CD-602-4.3



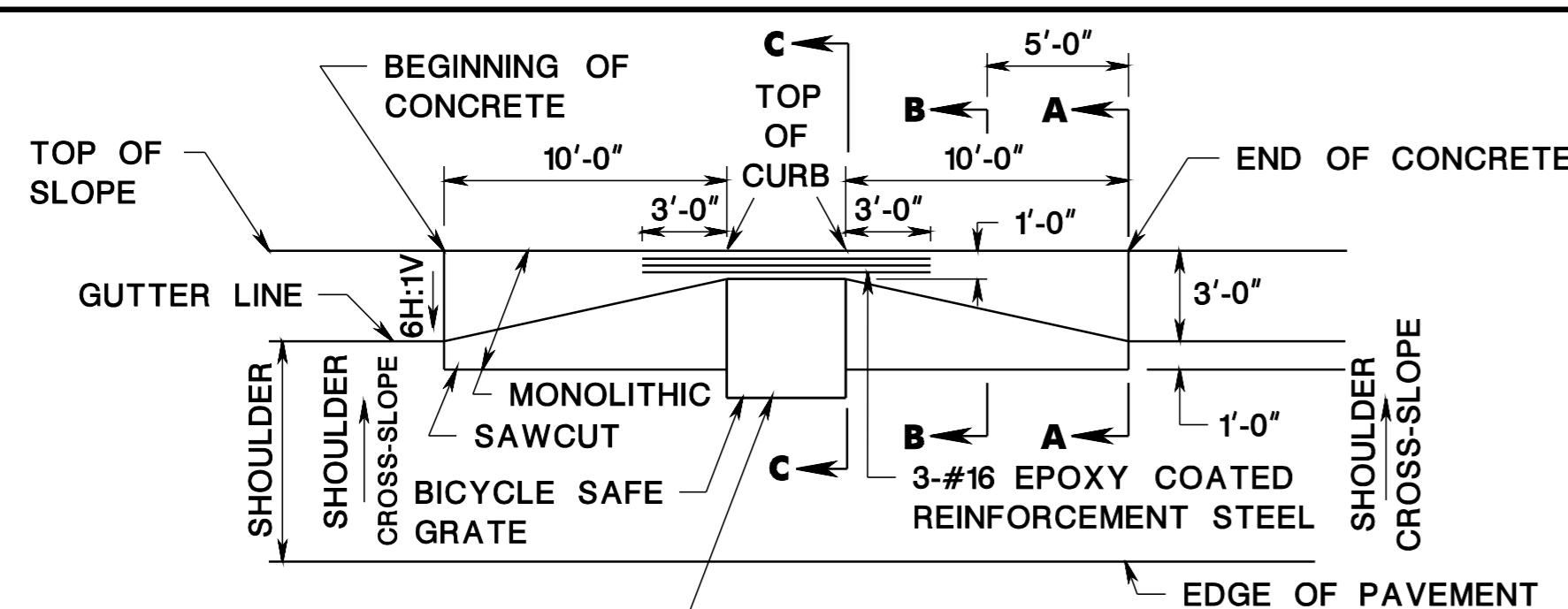
NOTE:
SHAPE THE UNDERLYING MATERIAL AND COMPACTED TO A FIRM, EVEN SURFACE.

NOTE:

PLAN VIEW



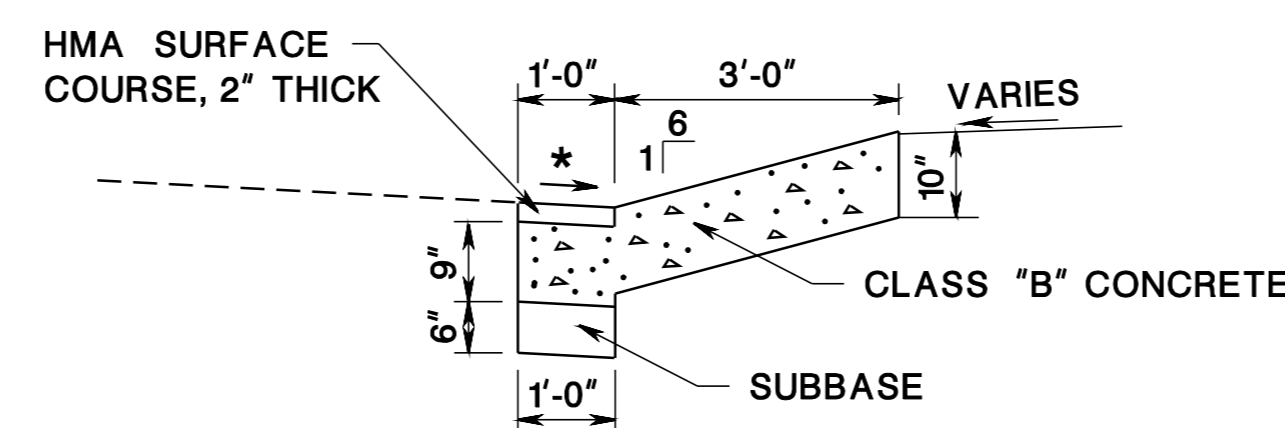
SECTION C-C



FOR EXISTING INLET TYPE "B", PROVIDE NEW INLET CASTING TYPE "E".
FOR EXISTING INLET TYPE "E" OR "ES" USE EXISTING CASTING.

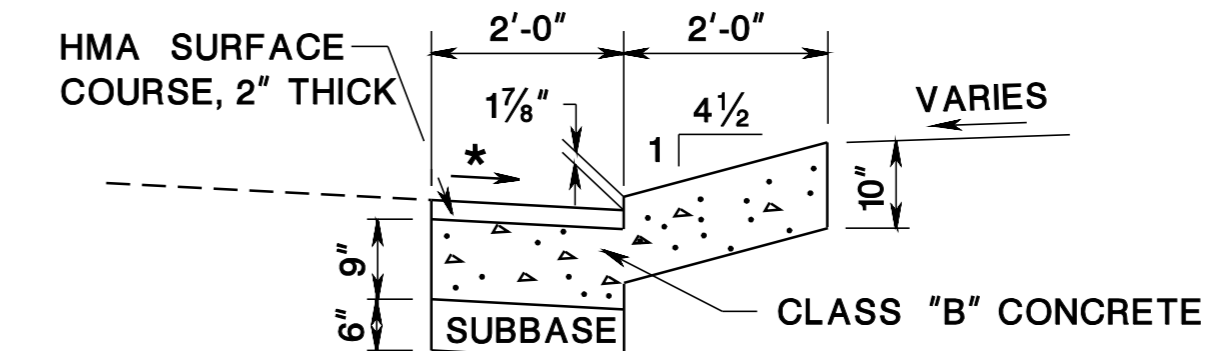
NOTE:
SHAPE THE UNDERLYING MATERIAL AND COMPACT TO A FIRM, EVEN SURFACE.

PLAN VIEW



SECTION A-A

SET INLET TYPE ES, CASTING



SECTION B-B

* SAME CROSS-SLOPE AS ADJOINING SHOULDER

CD-602-4.5

GENERAL NOTE:
1. SEE GENERAL NOTES AT CD-602-1.6.

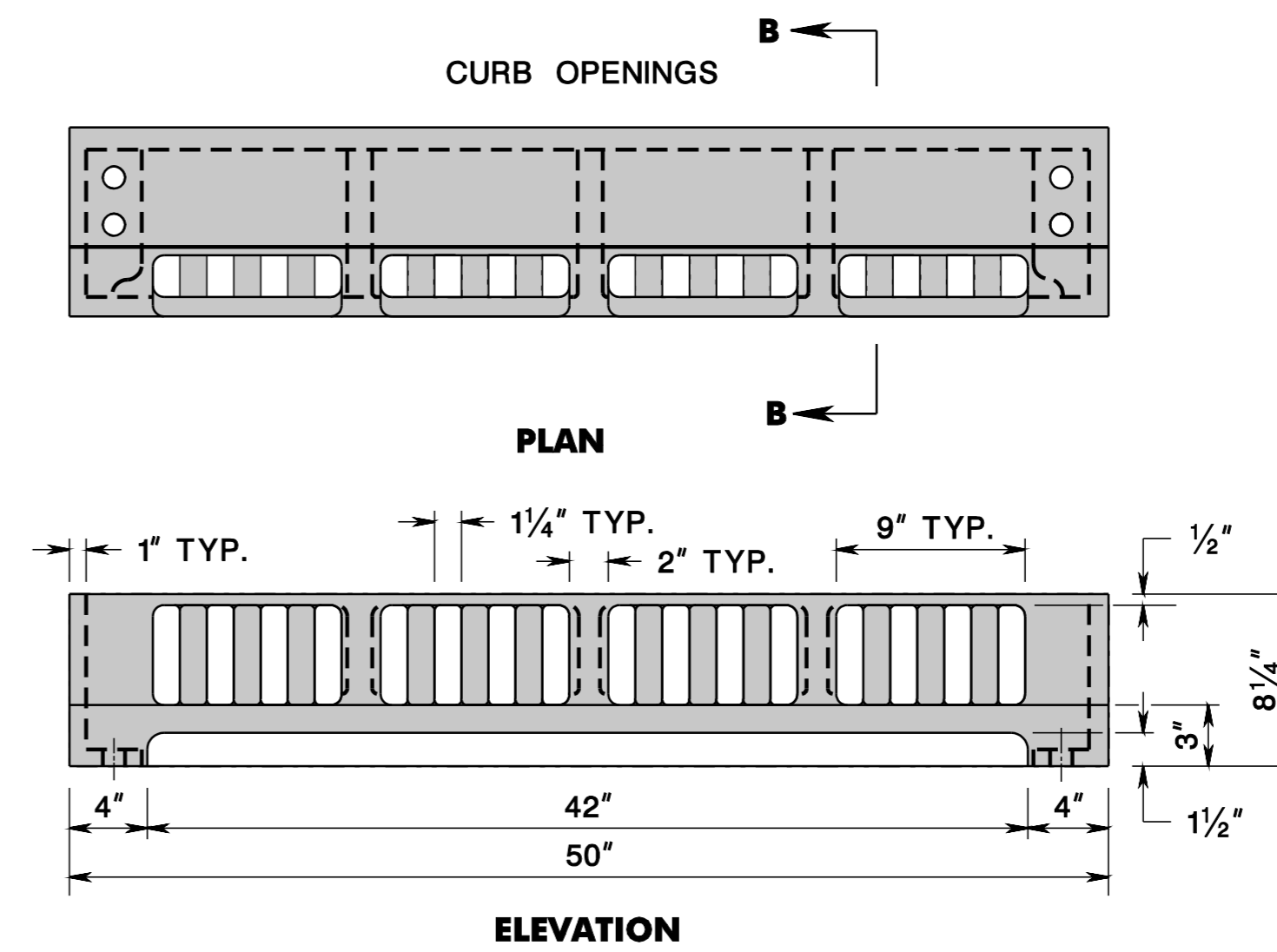
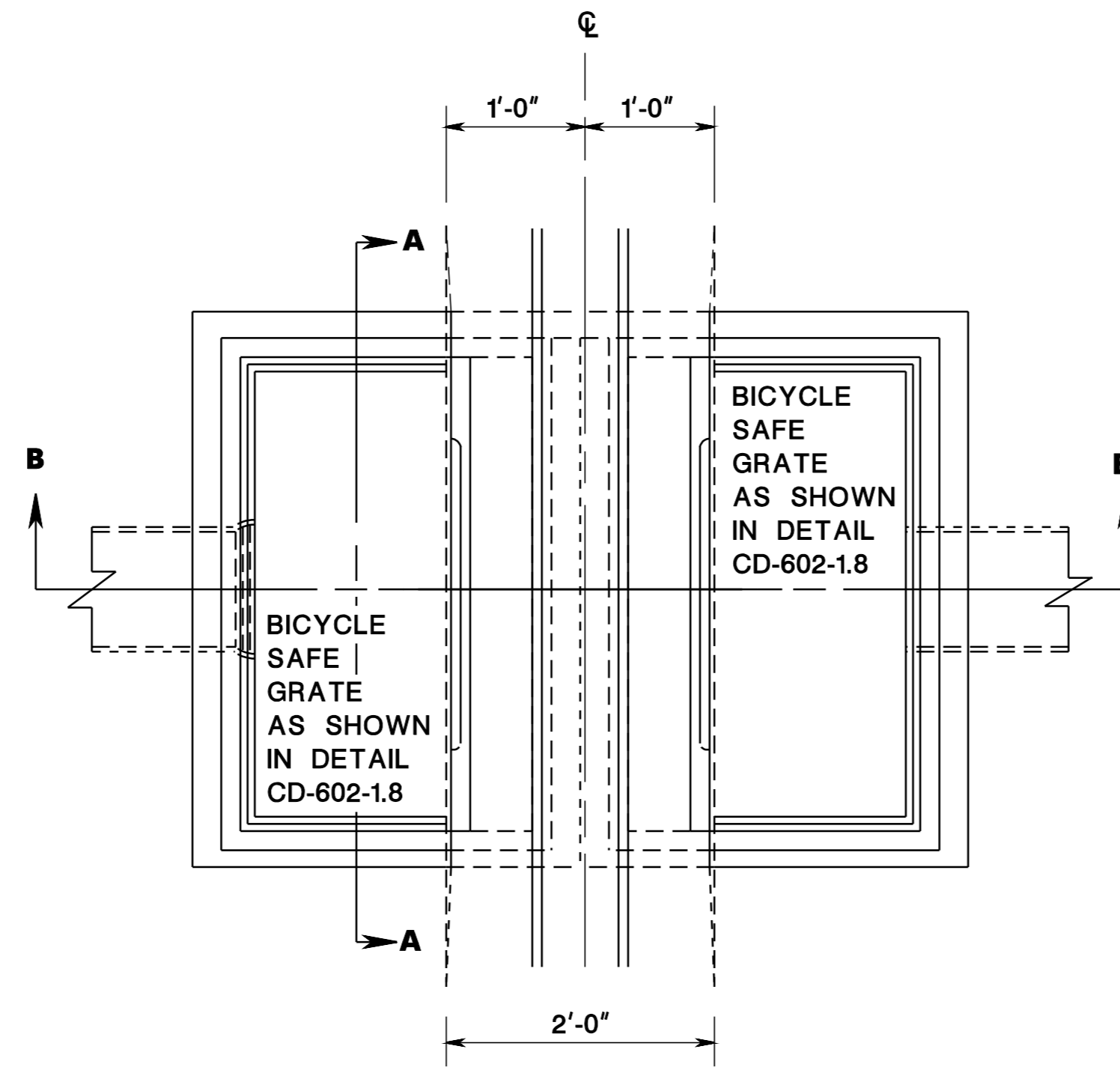
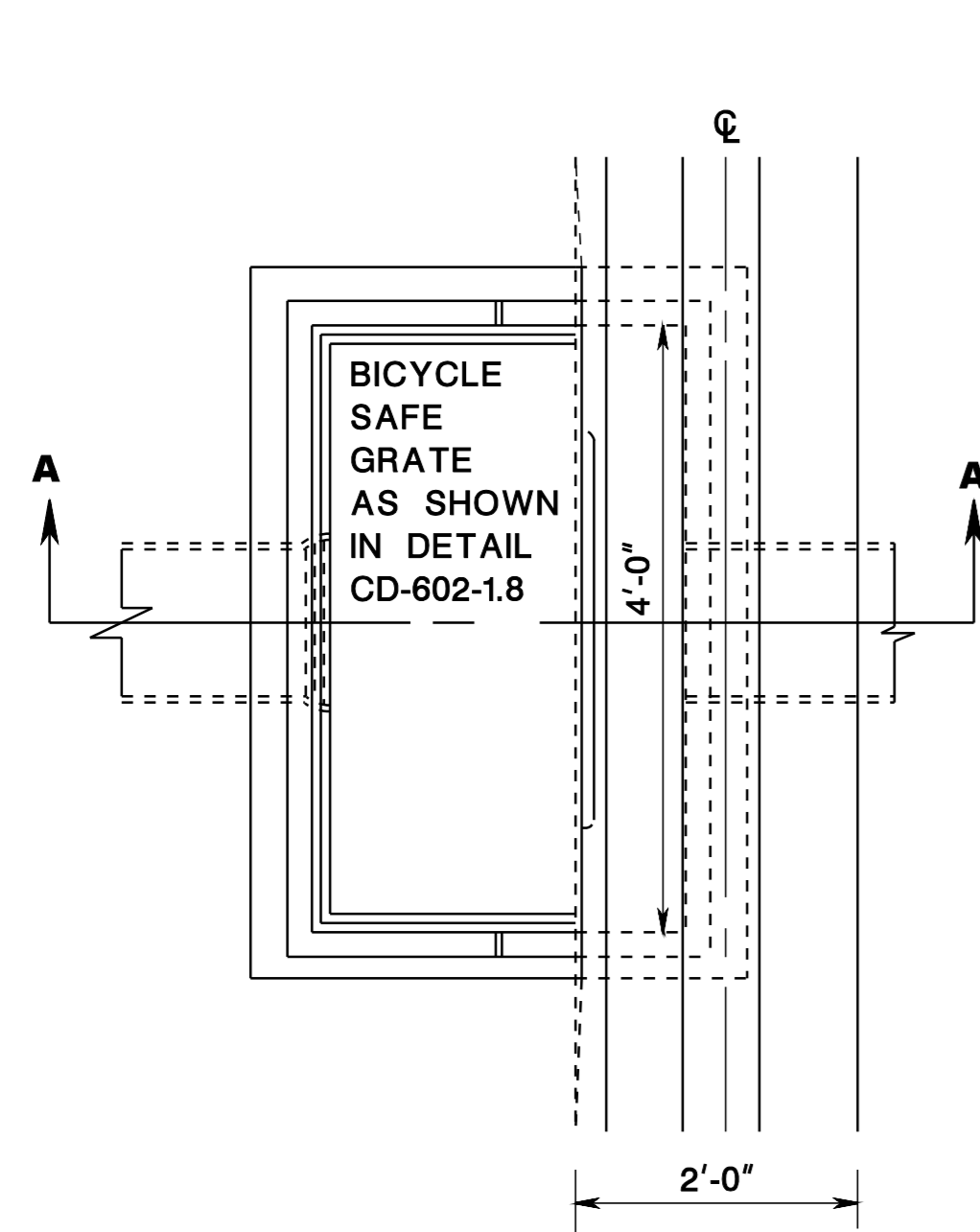
CD-602-4.6

INLETS, TYPE E, E1, E2, & ES
N.T.S.

CD-602-4

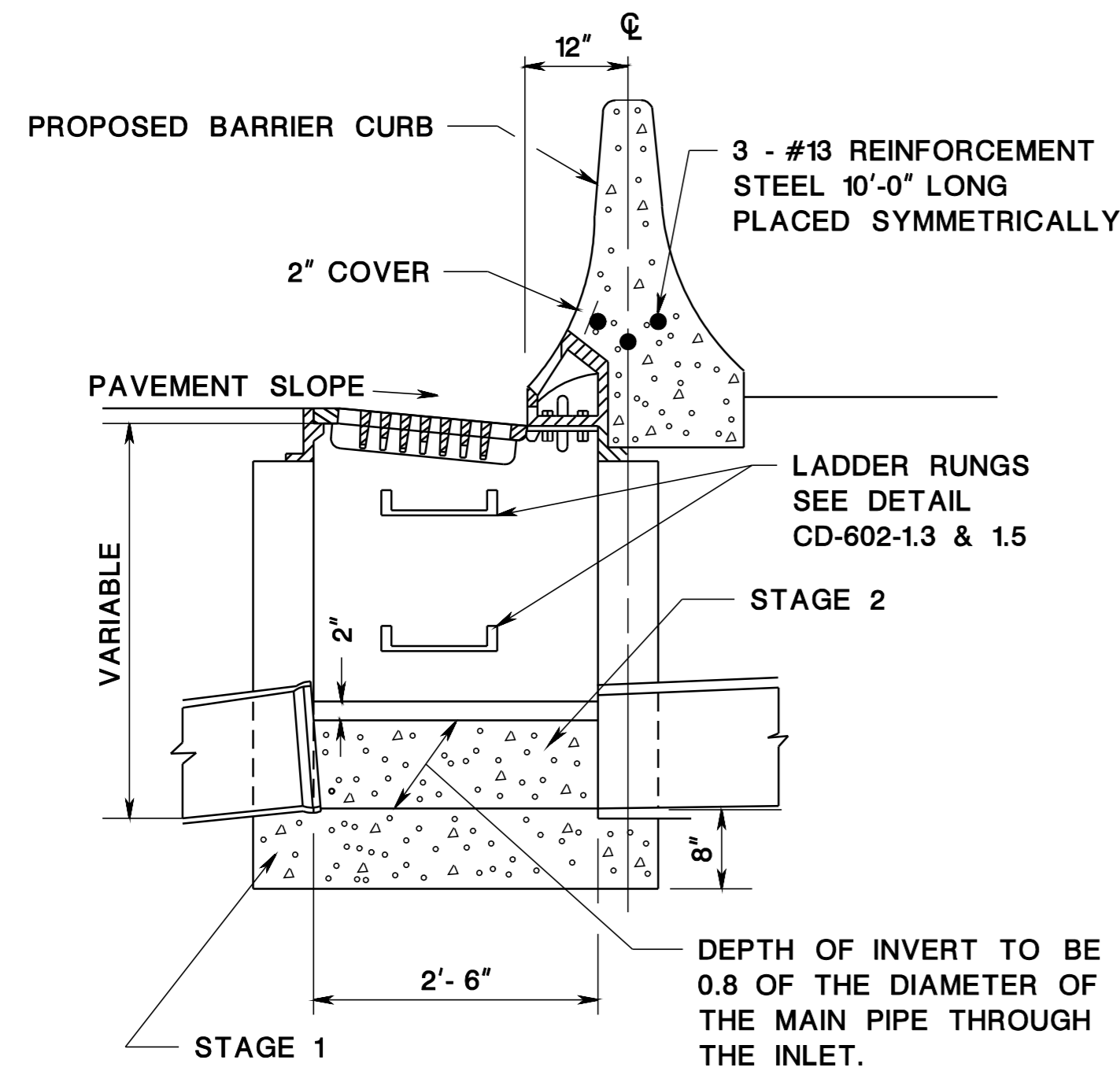
NEW JERSEY DEPARTMENT OF TRANSPORTATION

CONSTRUCTION DETAILS



CURB PIECE FOR INLETS, TYPE D1 AND D2

CD-602-5.3

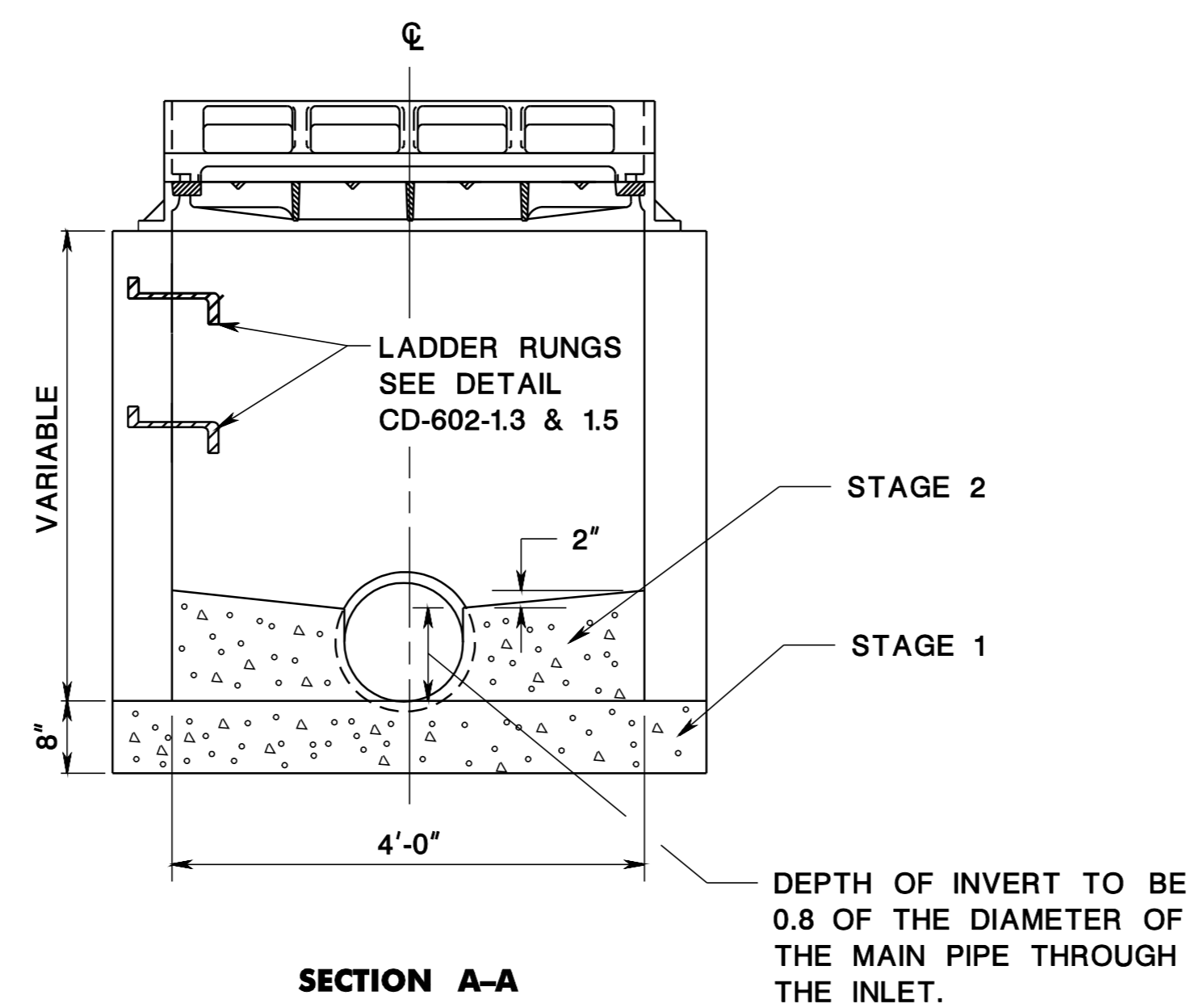


SECTION A-A

NOTE:
CONSTRUCT FOUNDATION AND INVERT IN 2 STAGES.
LEAVE TOP SURFACE OF STAGE 1 ROUGH.

INLET, TYPE D1

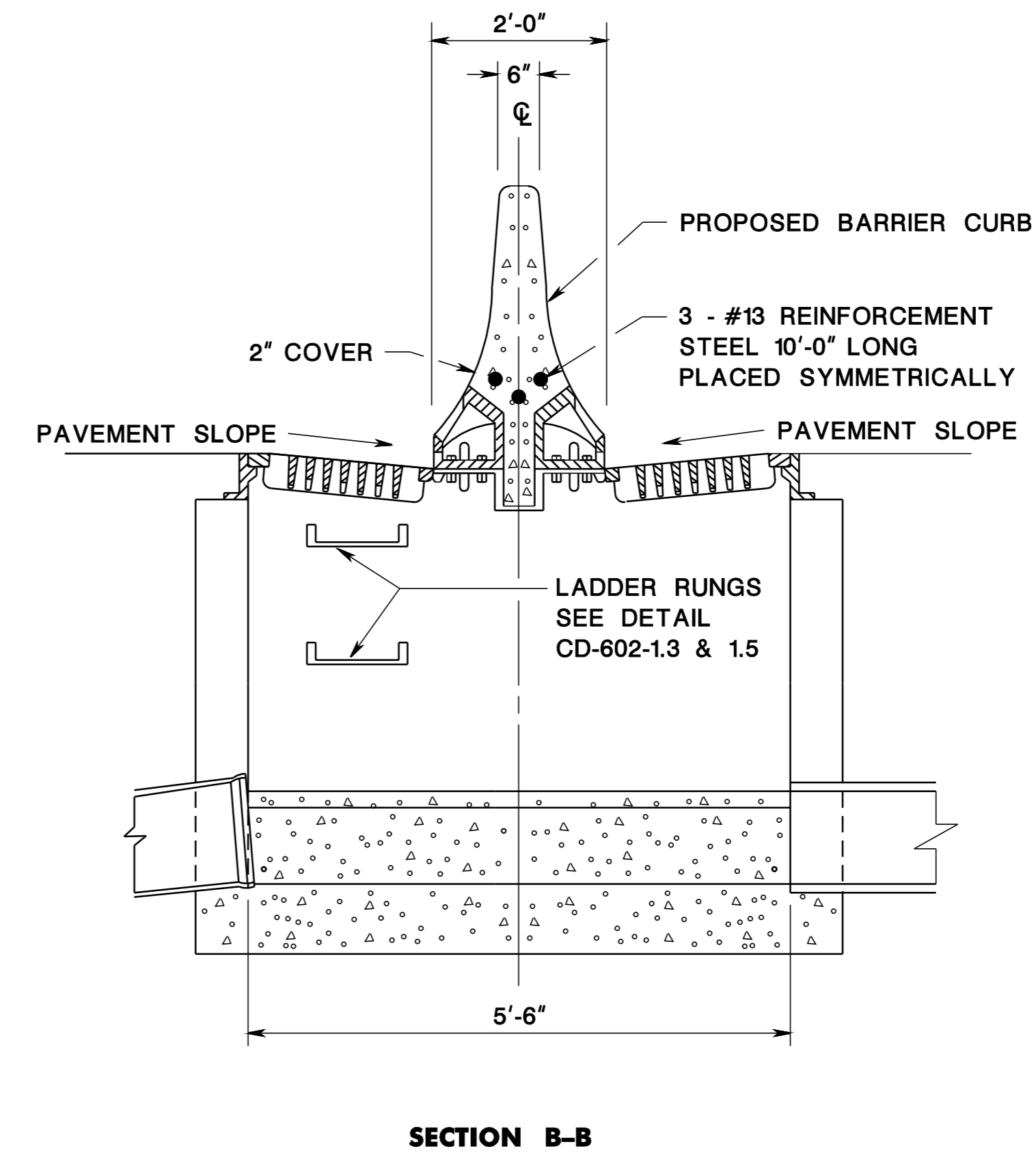
CD-602-5.1



SECTION A-A

NOTE:
CONSTRUCT FOUNDATION AND INVERT IN 2 STAGES.
LEAVE TOP SURFACE OF STAGE 1 ROUGH.

INLET, TYPE D2



SECTION B-B

GENERAL NOTES:

1. SEE GENERAL NOTES 9 AND 10 AT CD-602-1.6.
2. THE CLEAR SPACE IN THE CURB OPENING (OR EACH INDIVIDUAL CLEAR SPACE, IF THE CURB OPENING HAS TWO OR MORE CLEAR SPACES) MUST HAVE AN AREA OF NO MORE THAN SEVEN (7.0) SQUARE INCHES, OR BE NO GREATER THAN TWO (2.0) INCHES ACROSS THE SMALLEST DIMENSION.

CD-602-5.4

INLETS, TYPE D1 & D2

N.T.S.

CD-602-5

NEW JERSEY DEPARTMENT OF TRANSPORTATION

CONSTRUCTION DETAILS

CD-602-5.2