

# TABLE OF CONTENTS - SHEET 1

SHEET #	DESCRIPTION	SHEET #	DESCRIPTION	SHEET #	DESCRIPTION
1	COVER SHEET	41	CD-602-4 INLETS, TYPE E, E1, E2, & ES	74	CD-609-13 BEAM GUIDE RAIL ATTACHMENTS
2	TABLE OF CONTENTS - SHEET 1	42	CD-602-5 INLETS, TYPE D1 & D2	75	CD-609-14 BEAM GUIDE RAIL ATTACHMENTS
3	TABLE OF CONTENTS - SHEET 2	42A	CD-602-5A REPLACE INLET CURB PIECE TYPE B OR D IN EXISTING CONCRETE BARRIER CURB	76	CD-609-15 BEAM GUIDE RAIL ATTACHMENTS
<b>ROADWAY CONSTRUCTION DETAILS</b>		42B	CD-602-5B REPLACE INLET CURB PIECE TYPE B OR D IN EXISTING CONCRETE BARRIER CURB IN NEW CONCRETE SECTION	76A	CD-609-15A BEAM GUIDE RAIL ATTACHMENTS
4	INDEX 1 FOR STANDARD ROADWAY CONSTRUCTION DETAILS	43	CD-602-6 EXTENSION FRAMES FOR EXISTING INLETS	76B	CD-609-15B BEAM GUIDE RAIL ATTACHMENTS
5	INDEX 2 FOR STANDARD ROADWAY CONSTRUCTION DETAILS	44	CD-602-7 EXTENSION RING FOR EXISTING MANHOLE	77	CD-609-16 BEAM GUIDE RAIL ATTACHMENTS
6	INDEX 3 FOR STANDARD ROADWAY CONSTRUCTION DETAILS	45	CD-602-8 MANHOLE	77A	CD-609-16A BEAM GUIDE RAIL ATTACHMENTS
7	INDEX 4 FOR STANDARD ROADWAY CONSTRUCTION DETAILS	46	CD-602-9 PRECAST MANHOLE	78	CD-609-17 BEAM GUIDE RAIL ATTACHMENTS
8	CD-157-1 MONUMENT AND MONUMENT BOX	47	CD-602-10 CONCRETE HEADWALL AND APRON	78A	CD-609-17A BEAM GUIDE RAIL ATTACHMENTS
9	CD-158-1 SOIL EROSION AND SEDIMENT CONTROL MEASURES	48	CD-602-11 CONCRETE CULVERT	78B	CD-609-17B BEAM GUIDE RAIL ATTACHMENTS
10	CD-158-2 SOIL EROSION AND SEDIMENT CONTROL MEASURES	49	CD-603-1 SLOPE, OUTFALL, AND CHANNEL PROTECTION	78C	CD-609-17C BEAM GUIDE RAIL ATTACHMENTS
11	CD-158-3 SOIL EROSION AND SEDIMENT CONTROL MEASURES	50	CD-605-1 CHAIN-LINK FENCE	78D	CD-609-17D BEAM GUIDE RAIL ATTACHMENTS
12	CD-158-4 SOIL EROSION AND SEDIMENT CONTROL MEASURES	51	CD-605-2 CHAIN-LINK FENCE	78E	CD-609-17E BEAM GUIDE RAIL ATTACHMENTS
13	CD-159-1 TRAFFIC CONTROL DEVICES	52	CD-606-1 CONCRETE SIDEWALK (PUBLIC SIDEWALK CURB RAMP)	79	CD-609-18 MODIFIED THRIE BEAM GUIDE RAIL
14	CD-159-2 TRAFFIC CONTROL DEVICES	53	CD-606-2 DETECTABLE WARNING SURFACE	80	CD-609-19 MODIFIED THRIE BEAM GUIDE RAIL, DUAL FACED (NCHRP 350 TL-4)
15	CD-159-3 CONSTRUCTION BARRIER CURB (MASH TL-3)	54	CD-606-3 CONCRETE SIDEWALK (PUBLIC SIDEWALK CURB RAMP TABLES)	80A	CD-609-20 THRIE BEAM GUIDE RAIL TRANSITIONS
16	CD-159-4 CONSTRUCTION BARRIER CURB (ALTERNATE A) (MASH TL-3)	55	CD-606-4 CONCRETE SIDEWALK (PUBLIC SIDEWALK CURB RAMP TABLES)	81	CD-610-1 RAISED PAVEMENT MARKER (RPM), LOCATION
17	CD-159-5 CONSTRUCTION BARRIER CURB (ALTERNATE B) (MASH TL-3)	56	CD-606-5 CONCRETE AND HMA, DRIVEWAY AND SIDEWALK	82	CD-610-2 RAISED PAVEMENT MARKER (RPM), LOCATION
18	CD-159-6 CONSTRUCTION SIGNS	57	CD-606-6 CONCRETE AND HMA ISLAND	83	CD-610-3 RAISED PAVEMENT MARKER (RPM), LOCATION
19	CD-159-7 CONSTRUCTION SIGNS	58	CD-607-1 CONCRETE AND GRANITE CURB	84	CD-610-4 GROUND MOUNTED FLEXIBLE DELINEATORS
20	CD-159-8 INTERSTATE CONSTRUCTION IDENTIFICATION SIGN	59	CD-607-2 CURB TRANSITIONS	85	CD-610-5 RUMBLE STRIPS
21	CD-159-9 CONSTRUCTION IDENTIFICATION SIGNS	60	CD-607-3 BARRIER CURB	86	CD-610-6 CENTERLINE RUMBLE STRIP
22	CD-159-10 TEMPORARY CRASH CUSHION, COMPRESSIVE BARRIER SUMMARY TABLE	60A	CD-607-4 BARRIER CURB	87	CD-610-7 CENTERLINE RUMBLE STRIP
23	CD-202-1 SOIL REUSE	60B	CD-607-5 BARRIER CURB	87A	CD-610-8 TRAFFIC STRIPES AND MARKINGS
24	CD-203-1 I-9 SOIL AGGREGATE AND EMBANKMENT	60C	CD-607-6 BARRIER CURB	87B	CD-610-9 TRAFFIC STRIPES AND MARKINGS
25	CD-401-1 MILLING	61	CD-608-1 NONVEGETATIVE SURFACE	87C	CD-610-10 TRAFFIC STRIPES AND MARKINGS
26	CD-401-2 LONGITUDINAL JOINTS IN HMA	62	CD-609-1 BEAM GUIDE RAIL	87D	CD-610-11 TRAFFIC STRIPES AND MARKINGS
27	CD-405-1 CONCRETE PAVEMENT TRANSVERSE JOINTS	63	CD-609-2 BEAM GUIDE RAIL, DUAL FACED (MASH TL-3)	87E	CD-610-12 TRAFFIC MARKING SYMBOLS
28	CD-405-2 CONCRETE PAVEMENT LONGITUDINAL JOINTS	64	CD-609-3 RUB RAIL	87F	CD-610-13 TRAFFIC MARKING SYMBOLS
29	CD-405-3 CONCRETE PAVEMENT JOINTS NON-SKEWED LOAD TRANSFER ASSEMBLIES	65	CD-609-4 BEAM GUIDE RAIL ANCHORAGE (MASH TL-3)	87G	CD-610-14 TRAFFIC MARKING ROUTE SYMBOLS
30	CD-451-1 SLAB STABILIZATION	66	CD-609-5 TANGENT GUIDE RAIL TERMINAL (MASH TL-3)	88	CD-611-1 CRASH CUSHION COMPRESSIVE BARRIER SUMMARY TABLE
31	CD-452-1 PARTIAL DEPTH CONCRETE PAVEMENT REPAIR	67	CD-609-6 CONTROLLED RELEASE TERMINAL	89	CD-612-1 SIGNS
32	CD-453-1 FULL DEPTH CONCRETE PAVEMENT REPAIR	68	CD-609-7 MEDIAN GUIDE RAIL TREATMENTS	90	CD-612-2 SIGNS
33	CD-453-2 FULL DEPTH CONCRETE PAVEMENT REPAIR	68A	CD-609-7A MEDIAN GUIDE RAIL TREATMENTS	91	CD-612-3 SIGNS
34	CD-454-1 RETROFIT DOWEL BARS	68B	CD-609-7B MEDIAN GUIDE RAIL TREATMENTS	92	CD-612-4 STEEL U-POST SIGN SUPPORTS
35	CD-601-1 UNDERDRAINS	69	CD-609-8 BEAM GUIDE RAIL TREATMENTS	92A	CD-612-4A STEEL SQUARE POST SIGN SUPPORTS
36	CD-601-2 PIPE END SECTIONS	69A	CD-609-8A BEAM GUIDE RAIL TREATMENTS (MASH TL-3)	93	CD-612-5 STEEL U-POST SIGN SUPPORTS
37	CD-601-3 CROSS DRAIN OR UTILITY TRENCH CONSTRUCTION	70	CD-609-9 BURIED GUIDE RAIL TERMINAL	94	CD-612-6 STEEL U-POST SIGN SUPPORTS
38	CD-602-1 INLET GENERAL DETAILS	71	CD-609-10 GRADING AND ROADSIDE RECOVERY AREA AT TANGENT GUIDE RAIL TERMINALS	95	CD-612-7 BREAKAWAY SIGN SUPPORTS FOR GROUND MOUNTED SIGNS
39	CD-602-2 INLETS, TYPE A, B, & C	72	CD-609-11 BEAM GUIDE RAIL ATTACHMENTS	96	CD-612-8 BREAKAWAY SIGN SUPPORTS FOR GROUND MOUNTED SIGNS
39A	CD-602-2A DRIVEWAY ACCESS PLATE FOR INLET TYPE B AND TYPE C CASTING	73	CD-609-12 BEAM GUIDE RAIL ATTACHMENTS	97	CD-612-9 BREAKAWAY SIGN SUPPORTS FOR GROUND MOUNTED SIGNS
40	CD-602-3 INLETS, TYPE B1, B2, & B, B1, & B2 MODIFIED			98	CD-612-10 BREAKAWAY SIGN SUPPORTS FOR GROUND MOUNTED SIGNS

**ABBREVIATIONS**

CD = ROADWAY  
TCD = TRAFFIC CONTROL DETAILS  
BCD = BRIDGE CONSTRUCTION DETAILS

BDC23D-04 - REVISED	BDC23D-02 - NEW SHEET CD-612-1A
BDC23D-05 - REVISED	BDC23D-01 - NEW SHEETS CD-602-5A THRU 6B
BDC23D-06 - REVISED	BDC23D-07-NEW SHEETS CD-612-8 THRU 14
BDC23D-07-REVISED	BDC23D-08-REVISED CD-389-3, CD-389-4, CD-389-5
BDC23D-08-REVISED	
BDC23D-09-REVISED	
BDC23D-10-REVISED	
BDC23D-11-REVISED	
BDC23D-12-REVISED	
BDC23D-13-REVISED	
BDC23D-14-REVISED	
BDC23D-15-REVISED	
BDC23D-16-REVISED	
BDC23D-17-REVISED	
BDC23D-18-REVISED	
BDC23D-19-REVISED	
BDC23D-20-REVISED	
BDC23D-21-REVISED	
BDC23D-22-REVISED	
BDC23D-23-REVISED	
BDC23D-24-REVISED	
BDC23D-25-REVISED	
BDC23D-26-REVISED	
BDC23D-27-REVISED	
BDC23D-28-REVISED	
BDC23D-29-REVISED	
BDC23D-30-REVISED	
BDC23D-31-REVISED	
BDC23D-32-REVISED	
BDC23D-33-REVISED	
BDC23D-34-REVISED	
BDC23D-35-REVISED	
BDC23D-36-REVISED	
BDC23D-37-REVISED	
BDC23D-38-REVISED	
BDC23D-39-REVISED	
BDC23D-40-REVISED	

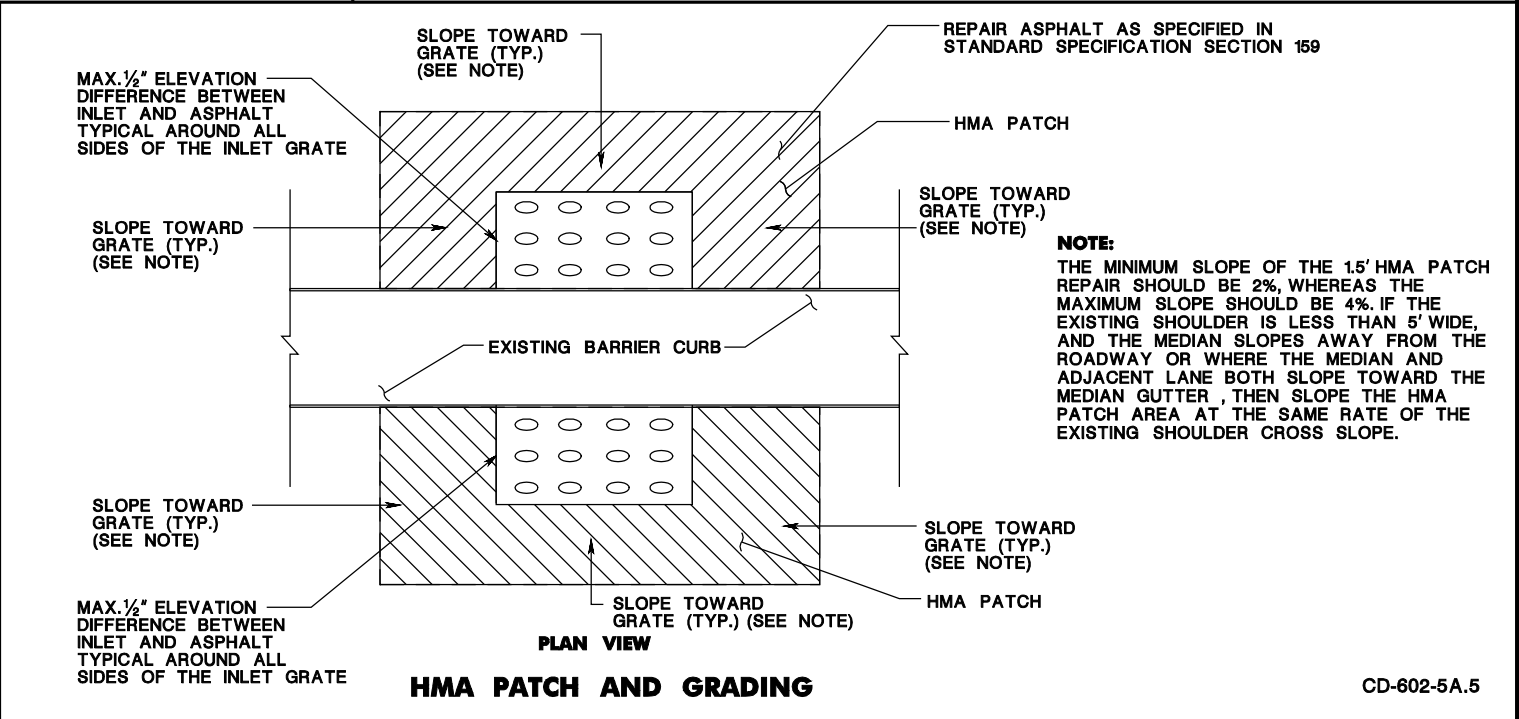
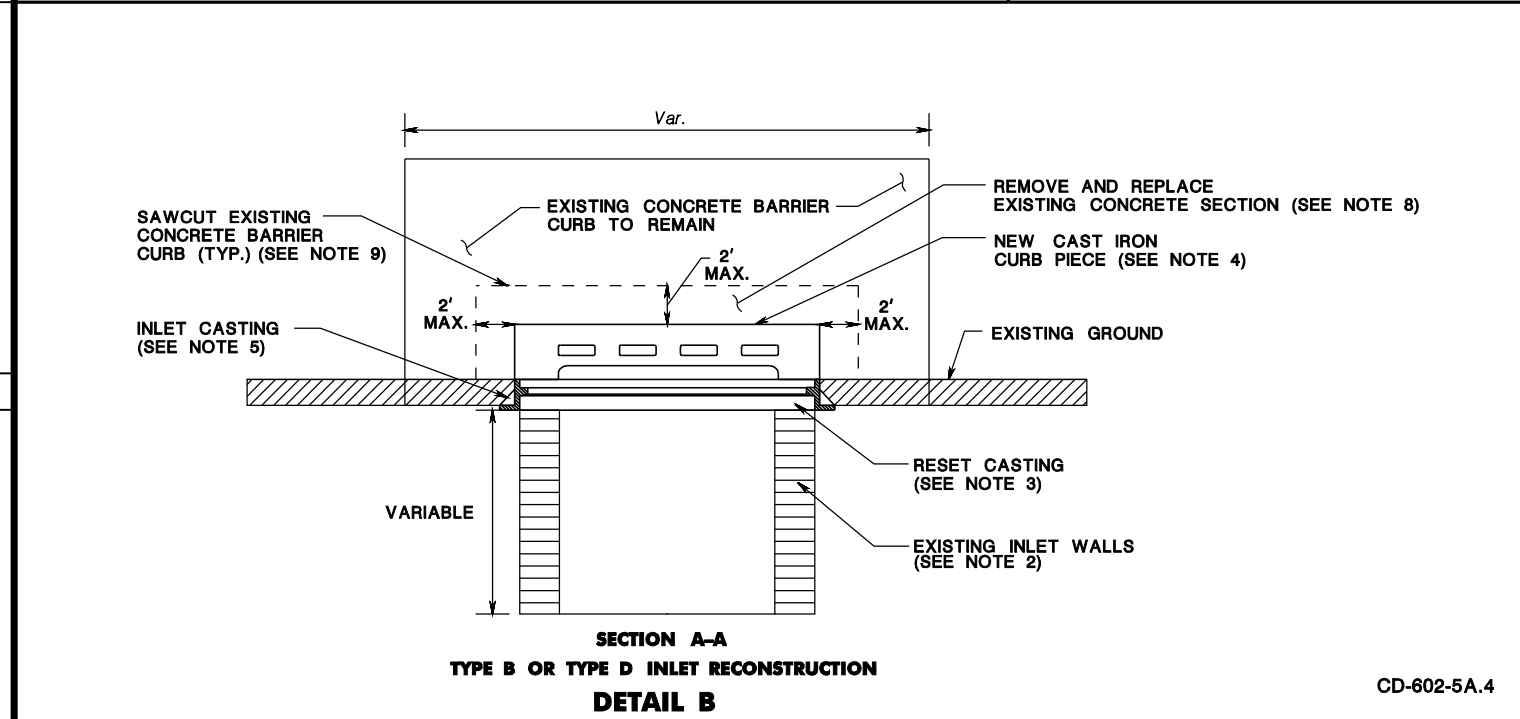
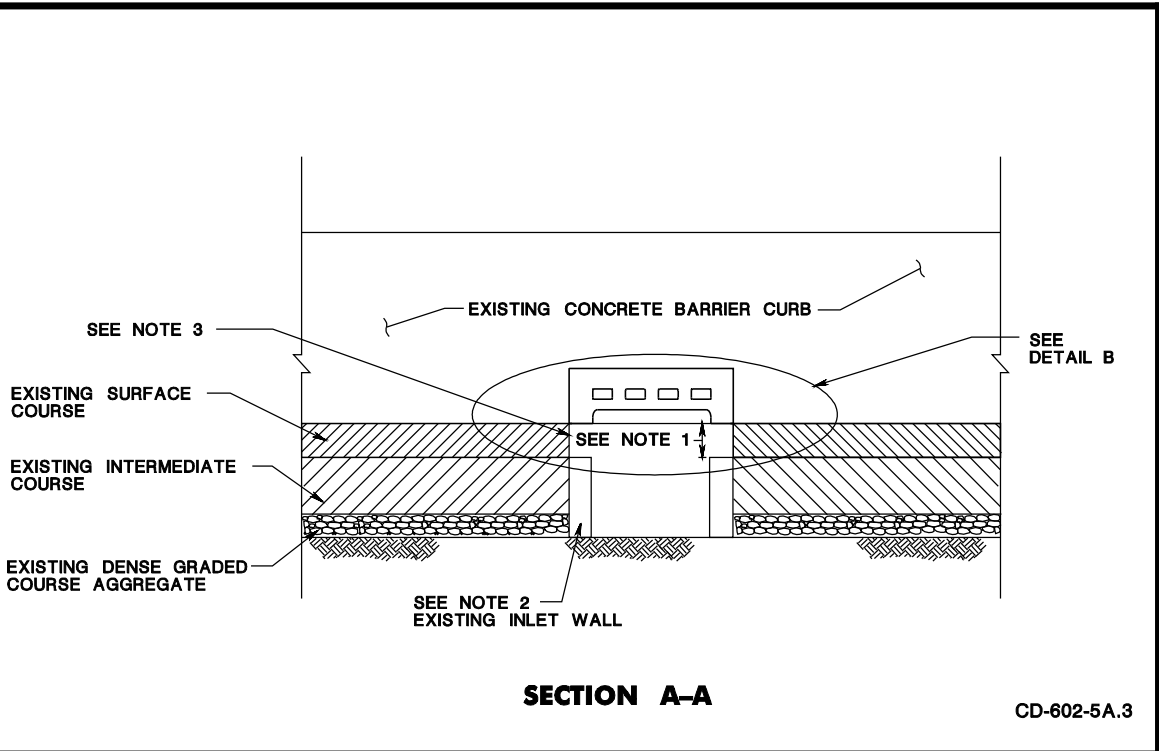
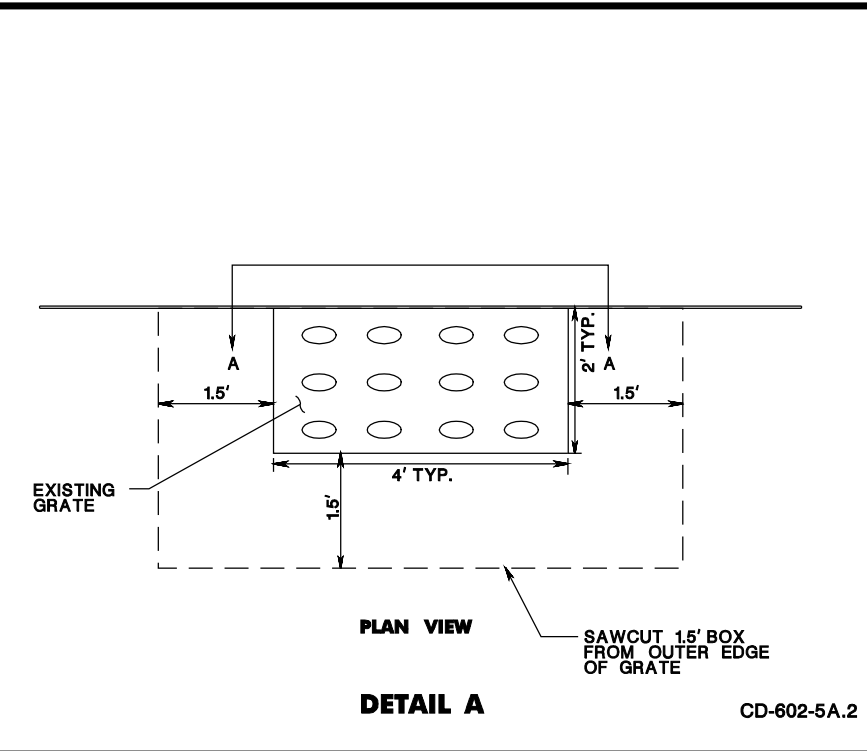
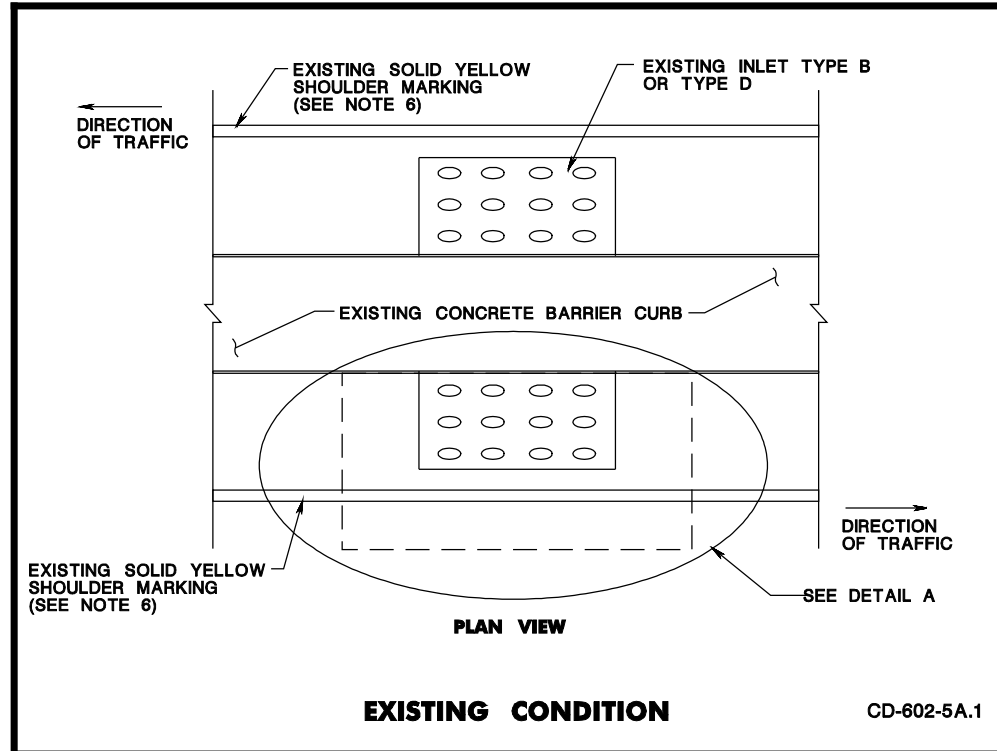
# INDEX FOR STANDARD ROADWAY CONSTRUCTION DETAILS

## INDEX SHEET 2

DESCRIPTION	CD	DESCRIPTION	CD	DESCRIPTION	CD
<b>DELINEATORS</b>		<b>HEADWALLS</b>		REPLACE INLET CURB PIECE TYPE B OR D IN EXISTING CONCRETE BARRIER CURB	CD-602-5A
GROUND MOUNTED FLEXIBLE DELINEATORS	CD-610-4	CONCRETE HEADWALL AND APRON	CD-602-10	EXISTING CONDITION	CD-602-5A.1
		CONCRETE HEADWALL	CD-602-10.1	DETAIL A	CD-602-5A.2
		CONCRETE HEADWALL WITH APRON	CD-602-10.2	SECTION A-A	CD-602-5A.3
				DETAIL B	CD-602-5A.4
<b>DRIVEWAYS</b>		<b>INLETS AND MANHOLES</b>		HMA PATCH AND GRADING	CD-602-5A.5
CONCRETE AND HMA DRIVEWAY AND SIDEWALK	CD-606-5	INLET GENERAL DETAILS	CD-602-1	NOTES	CD-602-5A.6
TYPE A	CD-606-5.1	CONNECTION OF PIPE AND INLET FOR PRECAST INLET	CD-602-1.1	REPLACE INLET CURB PIECE TYPE B OR D IN EXISTING CONCRETE BARRIER CURB IN NEW CONCRETE SECTION	CD-602-5B
TYPE B	CD-606-5.2	RISER JOINT DETAIL FOR PRECAST INLETS	CD-602-1.2	EXISTING CONDITION	CD-602-5B.1
TYPE C	CD-606-5.3	LADDER RUNG DETAIL	CD-602-1.3	DETAIL A	CD-602-5B.2
TYPE D	CD-606-5.4	DETAIL OF INVERT FOR INLET WITHOUT CONTINUOUS PIPE	CD-602-1.4	SECTION A-A	CD-602-5B.3
TYPE E	CD-606-5.5	COPOLYMER POLYPROPYLENE PLASTIC LADDER RUNG	CD-602-1.5	DETAIL B	CD-602-5B.4
TYPE F	CD-606-5.6	GENERAL NOTES	CD-602-1.6	HMA PATCH AND GRADING	CD-602-5B.5
GENERAL NOTES	CD-606-5.7	SQUARE FRAME MANHOLE CASTING, CIRCULAR COVER	CD-602-1.7	NOTES	CD-602-5B.6
TYPICAL DRIVEWAY TREATMENT	CD-606-5.8	BICYCLE SAFE GRATE (CAST IRON)	CD-602-1.8	EXTENSION FRAMES FOR EXISTING INLETS	CD-602-6.1
		INLETS, TYPE A, B, & C	CD-602-2	EXTENSION RINGS FOR EXISTING MANHOLE	CD-602-7.1
		INLET TYPE A	CD-602-2.1	MANHOLE	CD-602-8
<b>EMBANKMENT</b>		INLET TYPE B	CD-602-2.2	MANHOLE FRAME AND COVER	CD-602-8.1
SOIL REUSE	CD-202-1	INLET TYPE C	CD-602-2.3	MANHOLE 5 FOOT DIAMETER, MANHOLE 6 FOOT DIAMETER	CD-602-8.2
TEMPORARY STOCKPILING OF REGULATED MATERIAL OR ACID PRODUCING SOIL	CD-202-1.1	INLET TYPE A CASTING	CD-602-2.4	GENERAL NOTES	CD-602-8.3
		ALTERNATE BACK PLATE	CD-602-2.5	PRECAST MANHOLE	CD-602-9
REUSE OF REGULATED MATERIAL OR ACID PRODUCING SOIL IN UNPAVED AREAS, TYPICAL CROSS-SECTION	CD-202-1.2	INLET TYPE B AND TYPE C CASTING	CD-602-2.6	MANHOLE PRECAST CONCRETE MANHOLE 5' DIAMETER, MANHOLE 6' DIAMETER PRECAST CONCRETE	CD-602-9.1
REUSE OF REGULATED MATERIAL OR ACID PRODUCING SOIL IN ROADWAY OR RAMP EMBANKMENT, TYPICAL CROSS-SECTION	CD-202-1.3	METHOD OF SETTING CASTING FOR B TYPE INLET WHERE CURB PIECE HEIGHT IS 2" GREATER THAN CURB FACE	CD-602-2.7	48" PRECAST REINFORCED CONCRETE MANHOLE FLAT TOP	CD-602-9.2
REUSE OF REGULATED MATERIAL OR ACID PRODUCING SOIL FOR A RETAINING WALL	CD-202-1.4	DRIVEWAY ACCESS PLATE FOR INLET TYPE B AND TYPE C CASTING	CD-602-2A.1	PRECAST MANHOLE RISER JOINT	CD-602-9.3
NOTES	CD-202-1.5	INLETS, TYPE B1, B2, & B, B1, & B2 MODIFIED	CD-602-3		
I-9 SOIL AGGREGATE AND EMBANKMENT	CD-203-1	INLET, TYPE B MODIFIED	CD-602-3.1	<b>ISLANDS</b>	
BENCHING DETAIL	CD-203-1.1	INLET, TYPE B1 MODIFIED AND TYPE B2 MODIFIED	CD-602-3.2	CONCRETE AND HMA ISLAND	CD-606-6
LIMITS OF PLACING EMBANKMENT AND I-9 SOIL AGGREGATE	CD-203-1.2	METHOD OF DEPRESSING INLETS AT SHOULDERS	CD-602-3.3	CONCRETE ISLAND ON EXISTING PAVEMENT	CD-606-6.1
		FRAME TO BE USED FOR INLET, TYPE B MODIFIED	CD-602-3.4	LONGITUDINAL AND TRANSVERSE JOINT TREATMENT FOR CONCRETE ISLAND	CD-606-6.2
		INLETS, TYPE B1 AND TYPE B2	CD-602-3.5	HMA ISLAND, 10" THICK	CD-606-6.3
		INLETS, TYPE E, E1, E2, & ES	CD-602-4	CONCRETE ISLAND, 4" THICK	CD-606-6.4
		INLETS, TYPE E1 AND TYPE E2	CD-602-4.1		
<b>FENCES</b>		INLET, TYPE E	CD-602-4.2	<b>JOINTS</b>	
CHAIN-LINK FENCE	CD-605-1	FRAME FOR INLET, TYPE E	CD-602-4.3	LONGITUDINAL JOINTS IN HMA	CD-401-2
CHAIN-LINK FENCE, ___' HIGH	CD-605-1.1	INLET, TYPE ES	CD-602-4.4	WEDGE JOINT	CD-401-2.1
DRIVE ANCHOR SHOE ASSEMBLY	CD-605-1.2	SET INLET TYPE ES, CASTING	CD-602-4.5	OFFSET OF JOINTS	CD-401-2.2
CHAIN-LINK FENCE ASSEMBLIES	CD-605-1.3	INLETS, TYPE D1 & D2	CD-602-5	HMA PAVEMENT	CD-401-2.3
GENERAL NOTES	CD-605-1.4	INLET TYPE D1	CD-602-5.1	COMPACTION OF UNCONFINED VERTICAL EDGE	CD-401-2.4
GATES, CHAIN-LINK FENCE, ___' WIDE	CD-605-1.5	INLET TYPE D2	CD-602-5.2		
CHAIN-LINK FENCE	CD-605-2	CURB PIECE FOR INLETS, TYPE D1 AND D2	CD-602-5.3		
CHAIN-LINK FARM-TYPE FENCE	CD-605-2.1				

BDC23D-04 - REVISED SHEETS CD-602-5A THRU 5B  
 BDC23D-01 - NEW SHEETS CD-602-5A THRU 5B  
 BDC18D-05-ADDED SHEET CD-602-2A  
 BDC18D-05-ORIGINAL SHEET

pen table= \\njdotpcrwa\project\proj\cd602\5A\roadway\Detail\_1.dwg  
 scale=62.527733:1.000000  
 date=05-OCT-2023 12:08  
 ID= 000754207  
 BDC23D-04 - REVISED  
 BDC23D-01-ORIGINAL SHEET



- NOTES:**
- EXCAVATE DOWN TO TOP OF CATCH BASIN. VARIABLE HEIGHT BASED ON SURFACE COURSE THICKNESS.
  - RECONSTRUCT DAMAGED WALLS AS PER STANDARD SPECIFICATION 602.
  - RESET CASTING WITH CONCRETE BLOCK AS SPECIFIED IN STANDARD SPECIFICATIONS SECTION 602.
  - FOR TYPE D RECONSTRUCTION, SEE STANDARD DETAIL CD-602-5. FOR TYPE B RECONSTRUCTION, SEE STANDARD DETAIL CD-602-2 AND CD-602-3.
  - PAY ITEMS AS PER STANDARD SPECIFICATION SECTION 602.04 RECONSTRUCTED INLET, TYPE \_\_\_\_, USING EXISTING CASTING OR RECONSTRUCTED INLET, TYPE \_\_\_\_, USING NEW CASTING WILL APPLY.
  - IF THE EXISTING SHOULDER IS 3.5' WIDE OR LESS, INSTALL TRAFFIC STRIPING 4' OR 6' TO MATCH WITH EXISTING SHOULDER STRIPE.
  - REMOVE AND REPLACE RAISED PAVEMENT MARKERS (RPMS) IN THE SHOULDER IF PRESENT.
  - USE TYPE "B" CONCRETE TO RESTORE SECTIONS OF CONCRETE BARRIER CURB THAT WERE REMOVED FOR INLET CASTING REMOVAL.
  - SAWCUT 2' MAXIMUM AROUND OUTER EDGES OF THE EXISTING CURB PIECE HORIZONTALLY TO REMOVE PART OF EXISTING CONCRETE BARRIER CURB.

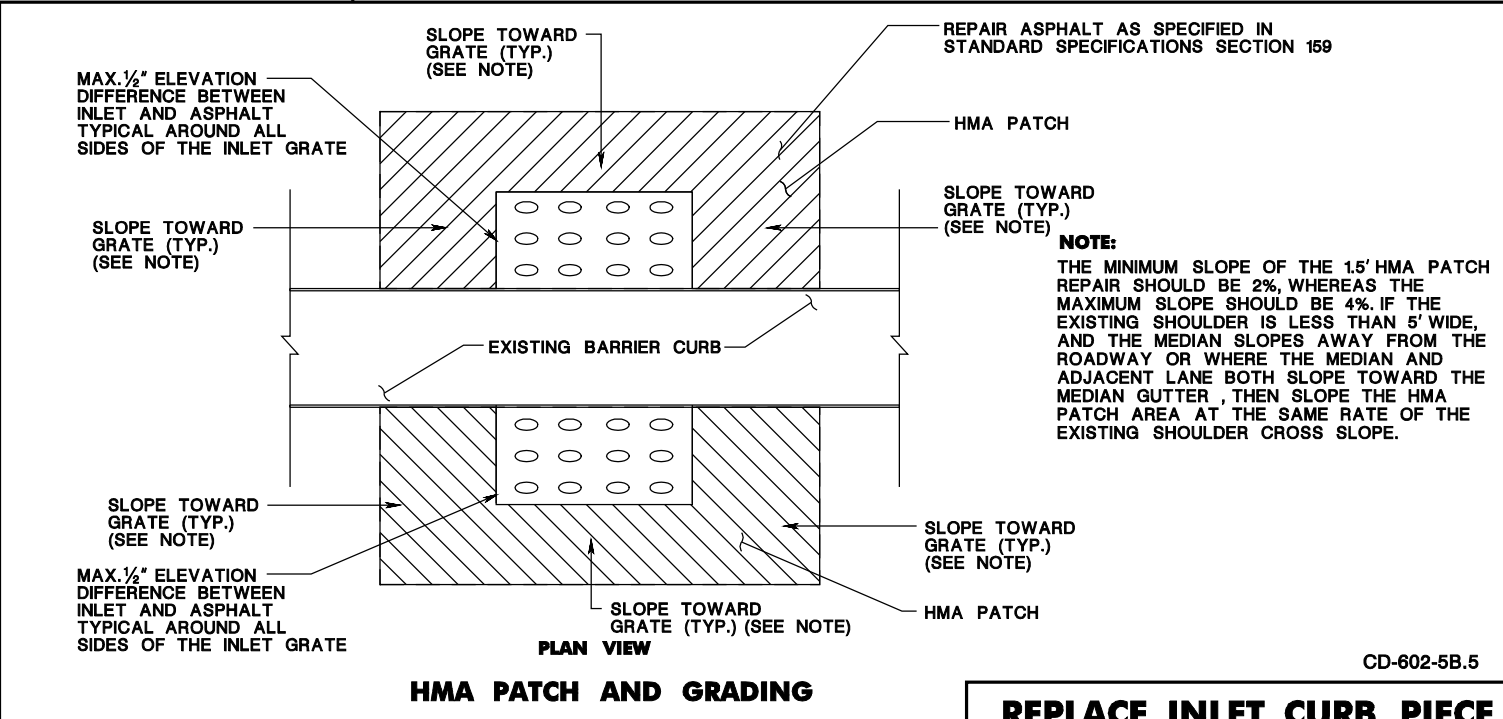
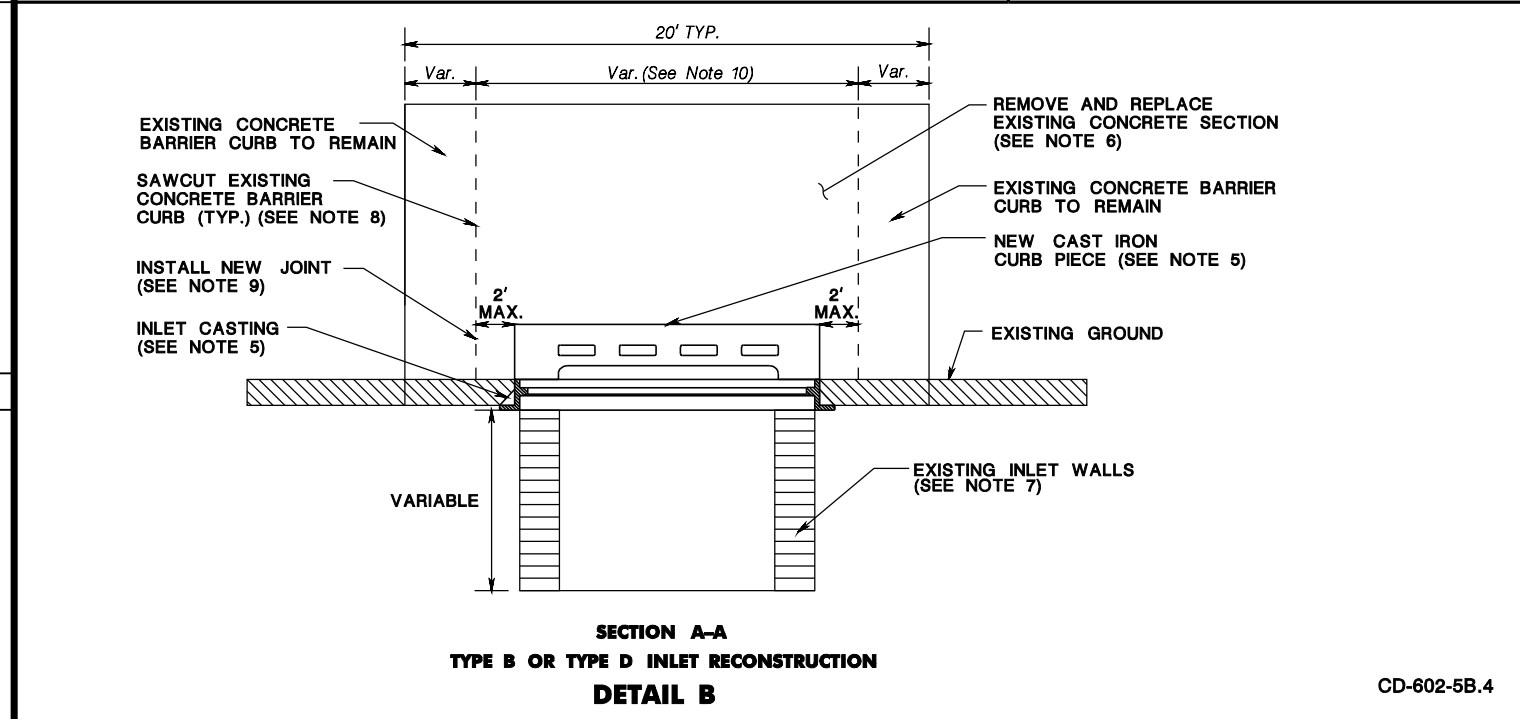
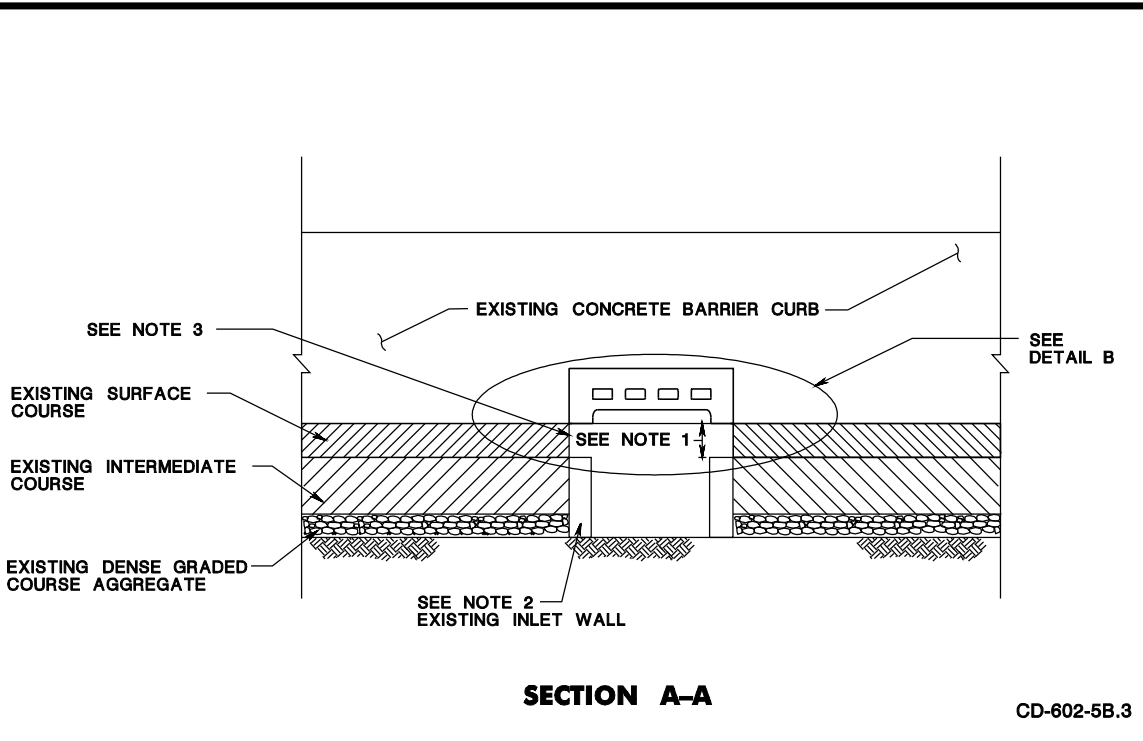
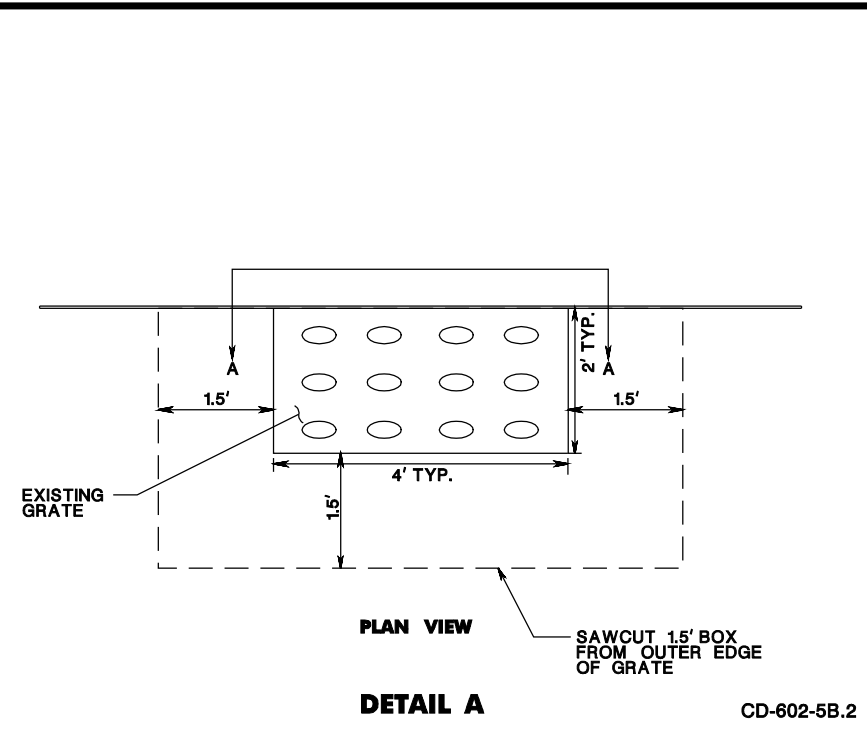
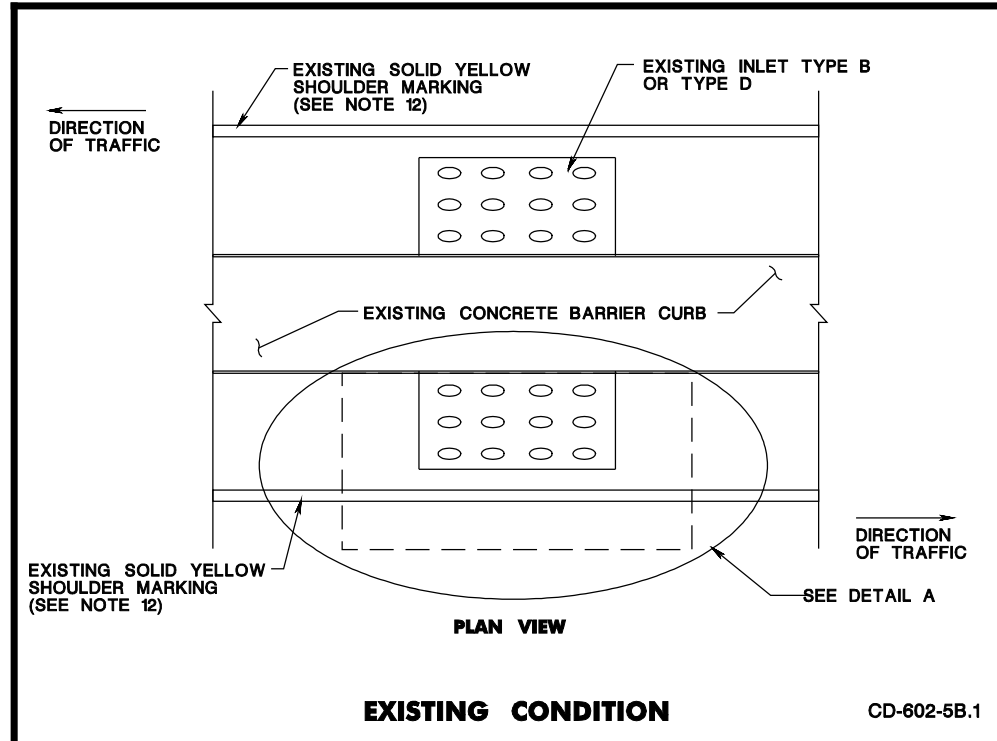
**REPLACE INLET CURB PIECE TYPE B OR D IN EXISTING CONCRETE BARRIER CURB**

N.T.S. CD-602-5A  
NEW JERSEY DEPARTMENT OF TRANSPORTATION

**CONSTRUCTION DETAILS**

CD-602-5A.6

pen table= \\sdpcprtw\project\project\project\plan\plan\roadway\Detail\_1.dwg, \_stcr7.tbl  
 scale=62.527733:1.000000  
 date=05-OCT-2023 12:15  
 ID= 000754207  
 BDC23D-04 - REVISED  
 BDC23D-01-ORIGINAL SHEET



**NOTES:**

- EXCAVATE DOWN TO TOP OF CATCH BASIN. VARIABLE HEIGHT BASED ON SURFACE COURSE THICKNESS.
- RECONSTRUCT DAMAGED WALLS AS PER STANDARD SPECIFICATION 602.
- RESET CASTING WITH CONCRETE BLOCK AS SPECIFIED IN STANDARD SPECIFICATION SECTION 602.
- PAVEMENT REPAIR, INLET REPAIR, RECONSTRUCTION OF THE CONCRETE BARRIER AROUND THE FACE PLATE, NEW TYPE "B" OR "D" INLET CASTING ARE ALL INCLUDED IN THE PAY ITEM RECONSTRUCTED INLET - NOTE 7.
- FOR TYPE D RECONSTRUCTION, SEE STANDARD DETAIL CD-602-5. FOR TYPE B RECONSTRUCTION, SEE STANDARD DETAIL CD-602-2 AND CD-602-3.
- USE TYPE "B" CONCRETE TO RESTORE SECTIONS OF CONCRETE BARRIER CURB THAT WERE REMOVED FOR INLET CASTING REMOVAL.
- PAY ITEM AS PER STANDARD SPECIFICATION SECTION 602.04 RECONSTRUCTED INLET, TYPE \_\_\_\_, USING EXISTING CASTING OR RECONSTRUCTED INLET, TYPE \_\_\_\_, USING NEW CASTING.
- SAWCUT 2' MAXIMUM AWAY FROM THE OUTER EDGES OF THE EXISTING CURB PIECE VERTICALLY TO REMOVE PART OF EXISTING CONCRETE BARRIER CURB.
- FILL THE TRANSVERSE JOINTS 1/2" WIDE WITH PREFORMED BITUMINOUS-IMPREGNATED FIBER JOINT FILLER, COMPLYING WITH THE REQUIREMENTS OF AASHTO M-213 SPECIFICATION, RECESSED 1/4" FROM FACES AND TOP OF CURB.
- DETERMINE LOCATION OF EXISTING JOINTS IN THE FIELD. IF THE EXISTING INLET IS LESS THAN 2' AWAY FROM THE ADJACENT CONCRETE BARRIER JOINT, THEN REMOVE THE PORTION OF CONCRETE BARRIER CURB UP TO THE NEAREST EXISTING JOINT.
- IF A REPAIR RESULTS IN A SECTION OF BARRIER CURB LESS THAN 6', THEN THE REPAIR SHOULD BE EXTENDED TO THE NEXT JOINT.
- IF THE EXISTING SHOULDER IS 3.5' WIDE OR LESS, INSTALL TRAFFIC STRIPING 4" OR 6" TO MATCH WITH EXISTING SHOULDER STRIPE.
- REMOVE AND REPLACE RAISED PAVEMENT MARKERS (RPMs) IN THE SHOULDER IF PRESENT.

**REPLACE INLET CURB PIECE TYPE B OR D IN EXISTING CONCRETE BARRIER CURB IN NEW CONCRETE SECTION**

N.T.S. CD-602-5B  
NEW JERSEY DEPARTMENT OF TRANSPORTATION

**CONSTRUCTION DETAILS**

CD-602-5B.6