

Transportation Alternatives (TA) Set-Aside Design Assistance

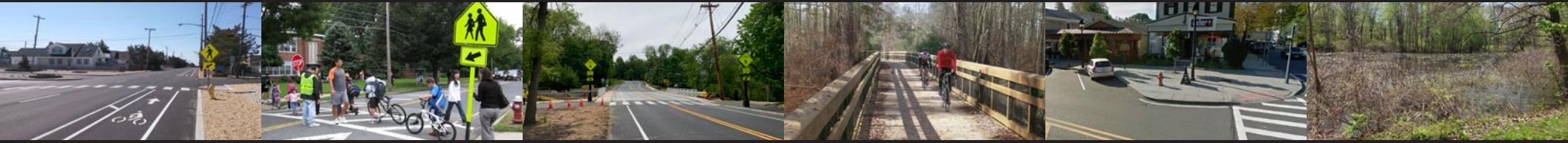
NV5 Related Services

NV5 is a multidiscipline firm of professionals dedicated to designs that enhance quality of life. We take pride in helping our clients develop and deliver cost-effective, sustainable and resilient projects that improve lives in their communities. Our northeast infrastructure team (*formerly The RBA Group*) is headquartered in Parsippany, NJ, with multiple offices in the northeast, including Philadelphia, PA and New York, NY.

NV5's core specialties include bicycle/pedestrian planning and design, recreational planning and design, landscape architecture and streetscape design, highway and traffic design, transportation planning, structural design, site design, utility services, environmental services, hydraulics / hydrology and construction management. We have provided design services for various counties and municipalities throughout New Jersey, and other major transportation agencies including NJDOT, NJTA, NJTPA, DRJTBC, SJTPO, DVRPC, NJ TRANSIT, PANY&NJ, NJDEP, DPMC, etc.

NV5's seasoned professionals are experienced in a broad range of transportation enhancement and transportation alternative settings. We are nationally and locally recognized, and are providing Transportation Alternative and Safe Routes to School (SRTS) Design Assistance throughout NJ, providing communities thoughtful responsive design solutions while successfully navigating Local Public Agencies (LPA's) through the NJDOT and FHWA's federal funding process.

NV5 is a full service multidiscipline firm. Below are some specific TA services:



Complete Streets

- Shared Streets for All
- Context Sensitive Design/Equitable Solutions
- Policy Plans
- Implementation & Training
- Multimodal Design/Connections
- Transit Access
- Smart Streets (Technology/Infrastructure)

Pedestrian Safety

- ADA Compatible (Sidewalks, Intersection Devices)/Bump Outs/Signal Upgrades
- Crosswalks (High Visibility, Colored/Textured)
- Safe Routes to School
- Traffic Calming/Road Diets/Speed Tables
- Signals (HAWK, Flashing Beacons, etc.)
- Lighting
- Pedestrian Bridges/Tunnels
- Shared Use Paths

Roadway/Traffic Improvements

- Pavement and Drainage Improvements
- Widening/Road Diet Reconstruction
- Intersection/Signal Design/Traffic Regulation/Roundabouts
- MUTCD Signing / Striping
- Roadside Safety
- Utility Design
- Survey/Basemapping

Bicycle Accommodation (On Road /Off Road)

- Pavement Markings/Sharrows (shared lane markings)
- Dedicated Bike Lanes
- Buffered Bike Lanes
- Parking /Bike Racks
- Signing
- Shared Use Paths
- Trails & Greenways, Rail-Trails

Streetscape Design

- Landscape (Green Infrastructure)
- Gateways/Decorative Treatments
- Pedestrian Plazas
- Decorative Street Furniture, Parklets
- Wayfinding Signage
- Decorative Lighting
- Art /Cultural Elements
- Parking Accommodation

Environmental

- Public /Agency Outreach/Environmental Justice Assessment/NEPA Documentation/Technical Studies
- Water Resources, Hydrology & Hydraulics, Flood Plain Restoration/Management
- Green Stormwater Infrastructure Design
- Ecology, Permitting
- Cultural Resources including Archeology
- Hazardous Materials

Complete Streets (CS)

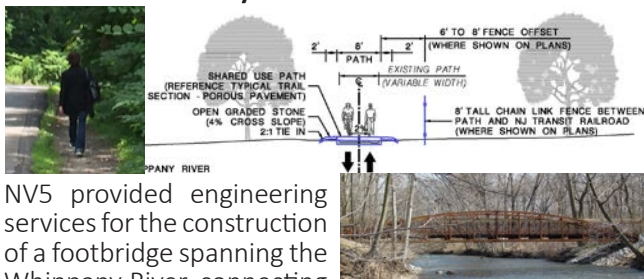
Client: New Jersey Department of Transportation

NV5 prepared CS program support documents for NJDOT. NV5 also helped NJDOT refine the Capital Project Delivery Process and made recommendations to the associated Activity Descriptions and Guidelines (Concept and Design phases) to implement the CS policy. NV5 instructs NJDOT, agency, county and municipal staff on implementing CS.



Patriots' Path on Great Morristown Greenway

Client: Morris County Park Commission



NV5 provided engineering services for the construction of a footbridge spanning the Whippany River, connecting portions of bicycle/pedestrian trails through Morris County parklands. NV5 is designing, as part of NJDOT Local Aid Design Assistance and federal TA grant, a Shared Use Path along a 0.9 mile section in the Town of Morristown that extends from MLK Blvd. to Rt. 202 involving trail design within NJ Transit ROW and historic districts and also includes: pedestrian bridge replacement, porous pavement, Cultural Resources, permits, outreach, etc.

Bridge Street Stockton Streetscape

Client: New Jersey Department of Transportation, Borough of Stockton



NV5 provided landscape architecture and streetscape design services for this \$2 million project, which is the connector roadway between the Route 29 Scenic Byway and Delaware River. Because Bridge Street crosses the D&R State Park and Canal, all design elements required approval from the NJ State Historic Preservation Office (SHPO). Streetscape improvements included: new blue stone curb and sidewalks, period lighting, street trees, ornamental plantings, bicycle trail crossing design and historic signage.



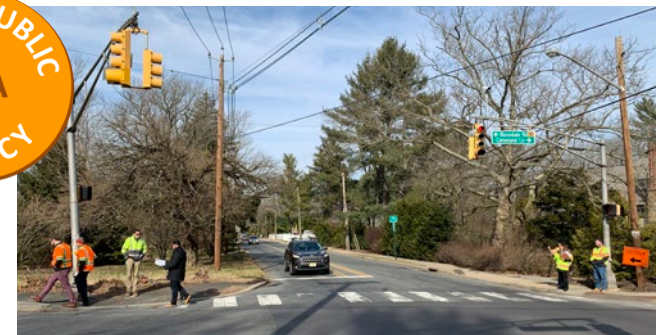
TRANSPORTATION ALTERNATIVES DESIGN ASSISTANCE (TA)—MULTIPLE PROJECTS FOR LPAs THROUGH NJDOT LOCAL AID AND ECONOMIC DEVELOPMENT USING FEDERAL AID FUNDS

NV5 has been selected by LPAs throughout NJ to provide Design Assistance Services for Preliminary Design, Final Design and Construction Support for the Federally Funded TA project grants listed below. Services include Multi-Use Trail design, streetscape and landscape architecture, signing and striping, intersection improvements, bicycle compatibility improvements, pedestrian safety, pedestrian bridges, ADA curb ramps, intersection and signal design, pedestrian scale lighting, cultural resources, technical environmental studies, environmental permitting, public outreach, preparation of contract plans, specifications and cost estimates (PS&E) as well as construction support:

- Metuchen Borough: Grove Ave. Bike Lane
- Frenchtown Borough: Streetscape Improvements
- Morris County Park Commission: Patriots' Path on Great Morristown Greenway (approx. .9-mile trail)
- City of Passaic: Market Streetscape Enhancement Project
- Toms River Township: Ortleigh Beach Streetscape and Gateway Treatment Project along Rt. 35 and gateways to Ortleigh Beach
- Town of Morristown: MLK Promenade Transit Connection Streetscape, pedestrian safety improvements
- Raritan Borough: Pedestrian Improvements from the NJ Transit Rail Station to the Riverfront
- Pennington Borough: Downtown Streetscape Improvements within Historic District

Other Transportation Alternative Projects

- DPMC/NJDEP: Waterloo Road Amphibian Passage System (Byram Twp.)
- Mercer County: Great Western Bikeway



SAFE ROUTES TO SCHOOL (SRTS) DESIGN ASSISTANCE—MULTIPLE PROJECTS FOR LPAs THROUGH NJDOT LOCAL AID AND ECONOMIC DEVELOPMENT USING FEDERAL AID FUNDS

NV5 has been selected by LPAs throughout NJ to provide Design Assistance Services for Preliminary Design, Final Design and Construction Support for the Federally Funded SRTS project grants listed below. Services include: Pedestrian safety, sidewalk and ADA curb ramps, signing and striping, intersection improvements, bicycle compatibility, utility coordination, environmental permitting, public outreach, and preparation of contract plans, specifications and cost estimates (PS&E) as well as construction support:

- Pemberton Township: SRTS improvements for roadways near Busansky and Emmons Schools Phase I and II
- Somerville Borough: SRTS improvements along Veteran's Memorial Drive East
- New Providence Borough: SRTS improvements for roadways near Allen W. Roberts and Salt Brook Elementary Schools
- Highland Park Borough: SRTS improvements for roadways near Irving School and Bartle School Phase I and II
- Village of Ridgewood: SRTS improvement for roadways near six (6) elementary schools and two (2) middle schools
- Princeton - Rosedale Road (CR 604) & Pathway Improvements associated with Johnson Park Elementary School
- City of Asbury Park - Bradley Elementary School
- City of Orange: Pedestrian Safety - Park Ave School
- Frenchtown Borough - SRTS Improvements
- City of Newark: SRTS Improvements for 13 Schools

NV5 was recently selected for SRTS 2022 projects by the following LPAs: Lawrence Twp.; Haddon Heights; Glen Ridge; Clayton Borough; New Providence; Pemberton Twp.; City of Passaic; Millburn Twp.



New York, Susquehanna, and Western (NYS&W) Railway Bicycle and Pedestrian Shared Use Path

Client: Morris County Engineering

NV5 provided engineering design and construction support services for the NYS&W Bicycle and Pedestrian Path, which will be a 4.8 mile shared-use path starting at River Drive in Pequannock and ending at the Mountain View Train Station in Wayne. The paved path is constructed over the inactive railroad bed of New York, Susquehanna, and Western (NYS&W) Railway. The paved path will be separated from automobile traffic; although the path will cross streets along the corridor. The path will serve as a transportation and recreational facility that connects residents, commuters, and visitors with area parks, schools, libraries, businesses, and transit. Currently under construction.



Delaware River Trail - Philadelphia

Client: Delaware River Waterfront Corporation

NV5 prepared a Master Plan and Preliminary Design Report for a five-mile section of the proposed Delaware River Trail between Pier 72 South/Mifflin

Street and Lehigh Avenue in Central Philadelphia, PA. This effort led to preparation of Final Design drawings for the construction of the first phase of the trail (the Penn Street Trail section). The solution along this part of the route called for design of a clever 'urban' side-path alongside Delaware Avenue and Penn Street. The project also developed underutilized roadway space into a new pedestrian plaza and featured sustainable storm-water management (rain gardens) and solar powered trail lighting, green infrastructure, and smart technologies.



Boyd McGuinness Park

Client: Jersey City, NJ

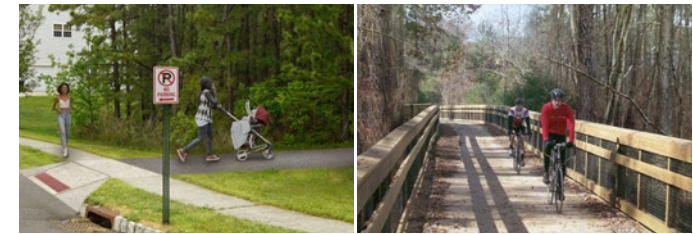
NV5 provided services from concepts through design and construction for an urban park including child play area, splash pad, natural stone amphitheater, rain garden, site lighting and furniture as well as historic monument.



Ortley Beach Streetscape and Gateway Improvements

Client: Toms River Township

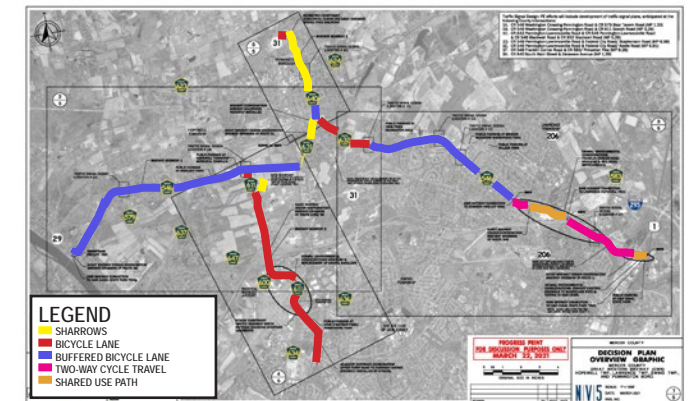
NV5 is providing design services for this streetscape improvement project consisting of decorative pedestrian street lights, benches, bike racks, trash & recycling receptacles, news racks and gateway signage. Proposed plantings will consist of linear planting areas adjacent to the proposed street lights and several street trees.



Cross Camden County Trail

Client: Camden County

NV5 is designing and providing NEPA environmental documents and contract plans for over 20 miles of shared use path in eight separate project segments across Camden County. The project includes sidepaths, rail-with-trail, and riverfront greenway, with a focus on connecting urban and suburban residential areas to employment centers, open spaces, and parks. Improvements include multiple pedestrian bridges and over one mile of boardwalk section. To date, Camden County has secured over \$5.3 million in federal funds through CMAQ and TASA funding. Estimated Construction Cost (all eight segments): \$55-60M



Mercer Co. Great Western Bikeway (GWB)

Client: Mercer County

NV5 is providing design services to establish 17.5 miles of bike lanes, buffered bike lanes, and multi-use paths on Mercer Co. roadways to serve as the spine for the northwestern part of the County's bicycle network with connections to parks, trails, residential and employment areas. Project Funding involves \$2.4M federal Regional Transportation Alternatives Program (RTAP) grant through NJDOT for design and construction.

Transportation Alternatives (TA) Set-Aside Design Assistance—Related Experience



**Route 9W
Bicycle and
Pedestrian
Improvements
9 miles Bergen
County
Client: NJDOT**



**Route 71
Pedestrian
Tunnel
at Monmouth
University
Client: NJDOT**



**Waterloo Road
Amphibian
Passage System
(Byram Twp.)
Client: NJ
DPMC**

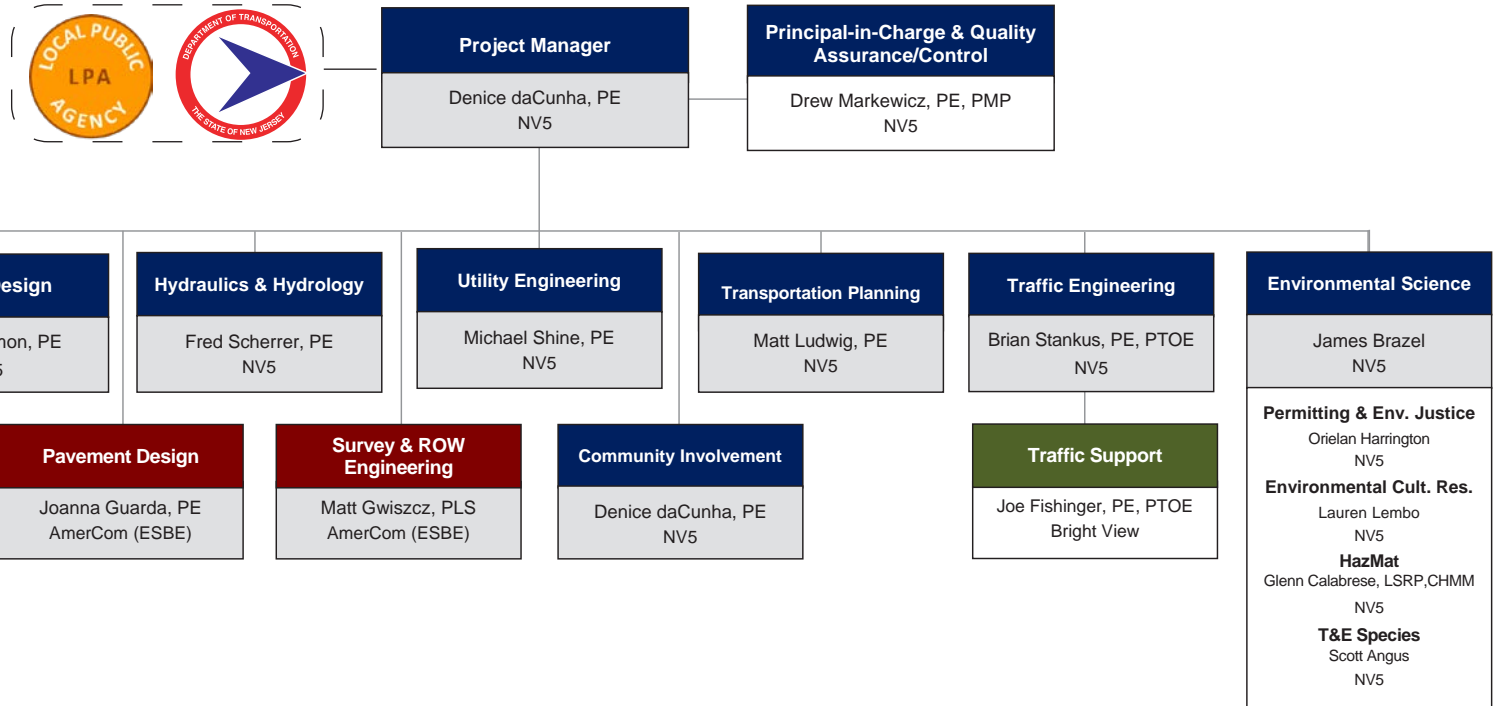


TAP Grant for Construction. NV5 Design Services through NJDPMC (Division of Property Management and Construction)



**Sunset Blvd. - Streetscape, Bicycle, Pedestrian,
Roadway & Drainage Improvements
Client: Cape May County**

NV5 PROFESSIONAL STAFF Project Organization



Denice daCunha, PE—Project Manager

Direct: 973.946.5624

Denice is a Professional Engineer with over 35 years of experience at NV5 in the design and management of numerous highway, bridge and traffic engineering assignments. Her experience includes managing NJDOT projects throughout all design phases: conceptual, preliminary, final design and construction support. Projects have included Transportation Alternatives, Safe Routes to School (SRTS), ADA compliance, bicycle and pedestrian improvements, signal upgrades, signing/ striping, community outreach, etc. She has completed Rutgers CAIT Federal-Aid Responsible Charge and Federal Grant Management training. Several of Denice's projects have been recognized with awards from the American Planning Association, Engineers Council of NJ, NJ Concrete Association, Federal Highway Administration, and NJDOT Value Engineering.

SUMMARY STATEMENT

NV5 has been designing multi-modal improvements that enhance use and safety, and promote a sense of place unique to your community's vision and the needs of all users. Particularly relevant is our over 28 years of context-sensitive design projects involving pedestrian, bicycle, traffic calming, streetscape, urban design, and trail designs. Our recent development of Statewide Pedestrian, Bicycle, School Zone and Safety Guides, Local and National Complete Streets-related Training qualifications, and our experience with transportation and land use projects in NJ and throughout the northeast, demonstrate our unique qualifications. Our Team's Local Public Agency (LPA) experience on numerous Design Assistance projects and knowledge of Federal Aid requirements will assist LPA's in the successful advancement of the design and construction phases.