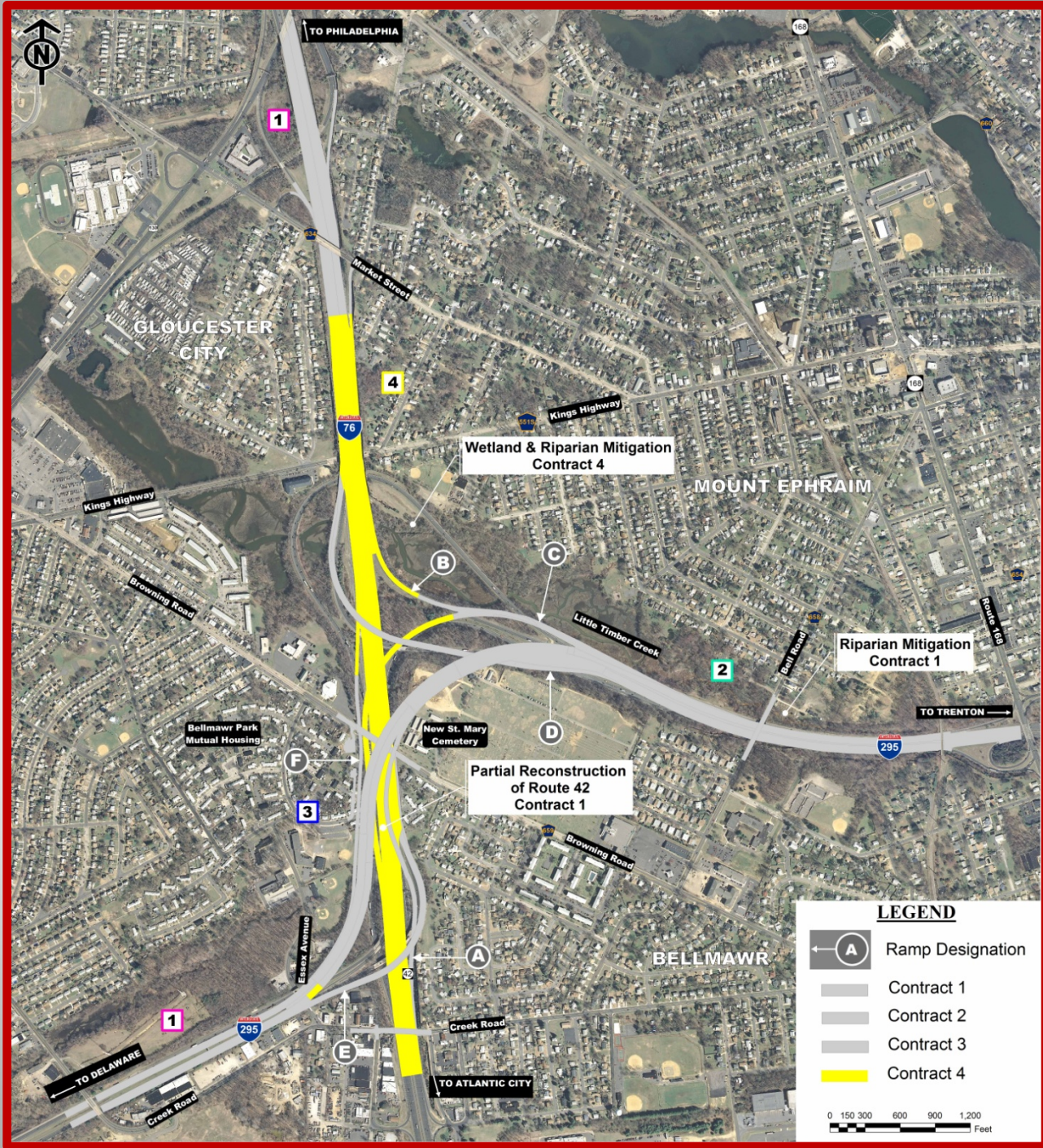


Contract #4



Contract #4 COMPLETE WORK ON I-76/ ROUTE 42

- New Ramp C Covered Roadway Opens
 - Al-Jo's Curve is Removed
- New Ramp F Opens
 - I-76 EB Left Hand Exit Closed
- New I-295 NB Opens to 2 Lanes
 - I-295 Ramp to I-76 Express Closed
- Removal of Al-Jo's Curve Bridge
 - Staging Similar to I-76 Redecking

