

GLOUCESTER CITY

TO PHILADELPHIA

MT EPHRAIM

BELLMAWR

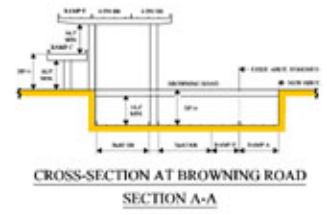
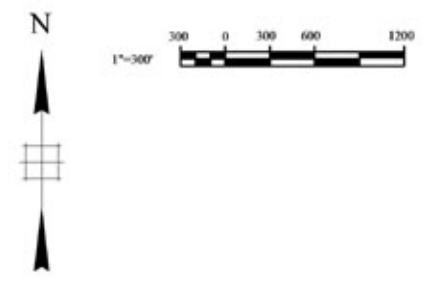
TO DELAWARE

TO TRENTON

TO ATLANTIC CITY

LEGEND

- Wetlands (Approx.)
- Existing Resources
- Existing Roads & Shoulders
- Existing Structures
(Bridges/Retaining Walls/Noise Walls)



ALTERNATIVE C2

- Northbound and Southbound I-295 are side-by-side
- I-295 placed above RL42/1-76
- I-295 On Viaduct over Ramp C and Browning Road
- I-295 On Viaduct over Ramp A and Ramp D
- I-295 shifts north toward Mt. Ephraim
- Removes express/ local lanes on I-76 Westbound
- I-295 Posted Speed Limit: 55 mph
- Ramp Posted Speed Limits: 40 mph

- Ramp Designation

- Roadway
- Bridge
- Ramps of Missing Moves
- Roadway to be Removed