

GLOUCESTER CITY

TO PHILADELPHIA

MT EPHRAIM

BELLMAWR

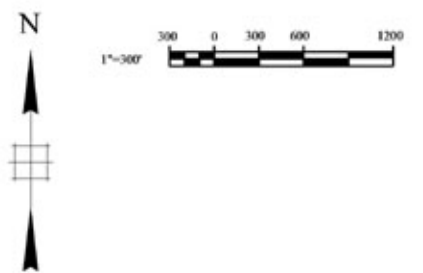
TO DELAWARE

TO TRENTON

TO ATLANTIC CITY

LEGEND

- Wetlands (Approx.)
- Existing Resources
- Existing Roads & Shoulders
- Existing Structures
(Bridges/Retaining Walls/Noise Walls)



ALTERNATIVE B2

- Shifts I-295 to the east side of RL421-76.
- Shifts I-295 North toward Mt. Ephraim
- Northbound and Southbound I-295 are side-by-side
- I-295 On Viaduct over Ramp A and Ramp D
- Removes express/local lanes on I-76 Westbound
- I-295 Posted Speed Limit: 55 mph
- Ramp Posted Speed Limits: 40 mph

- Ramp Designation
- Roadway
- Bridge
- Ramps of Missing Moves
- Roadway to be Removed