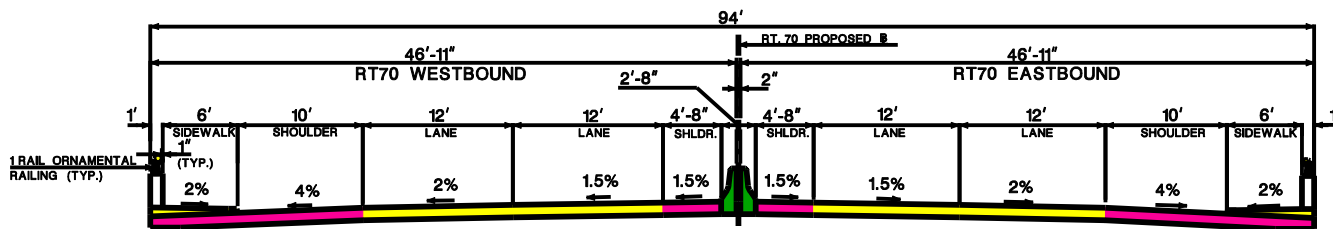
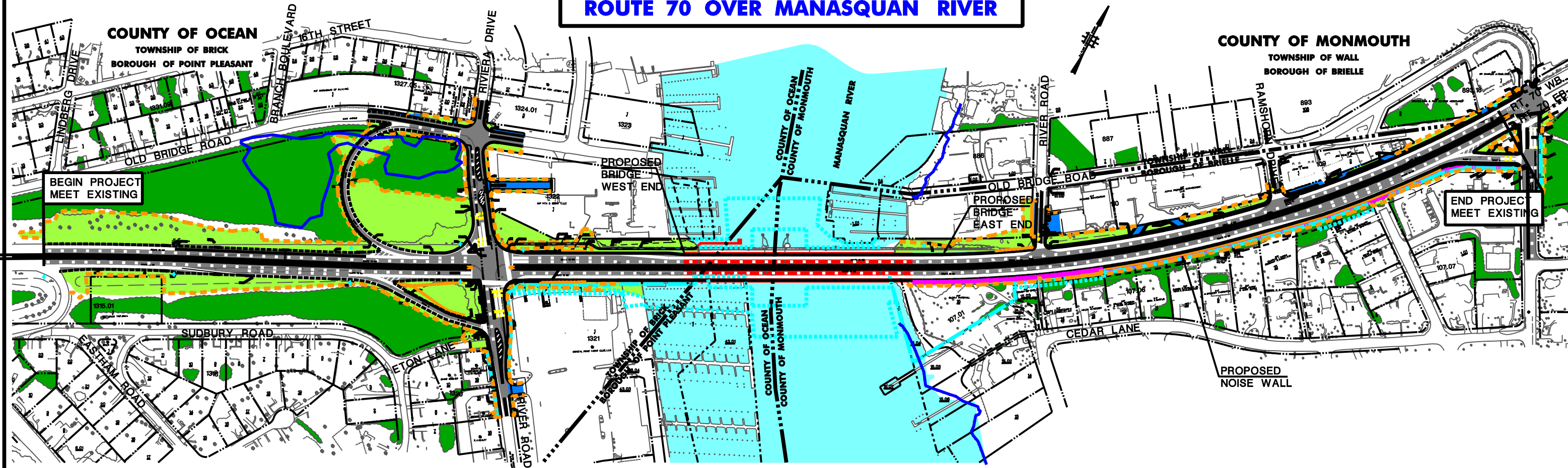
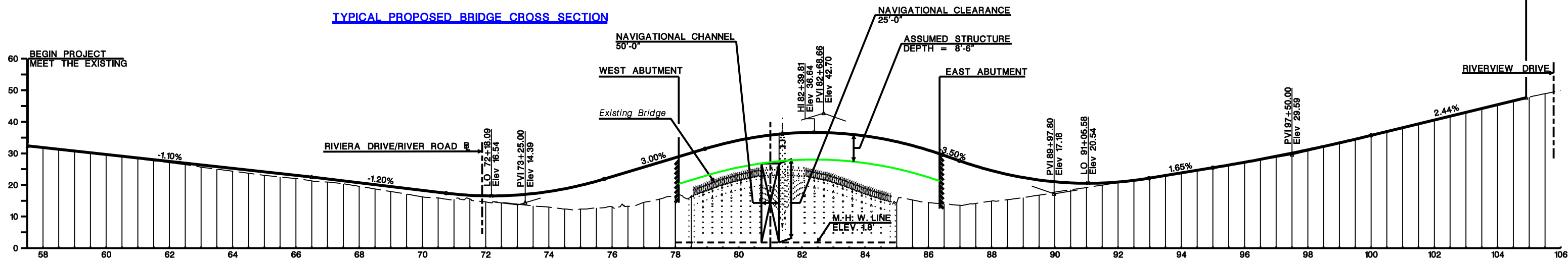


ROUTE 70 OVER MANASQUAN RIVER



TYPICAL PROPOSED BRIDGE CROSS SECTION



PROPOSED BRIDGE PROFILE

NEW JERSEY
DEPARTMENT OF TRANSPORTATION
PROPOSED ROUTE 70 PROJECT
DECEMBER 2003

