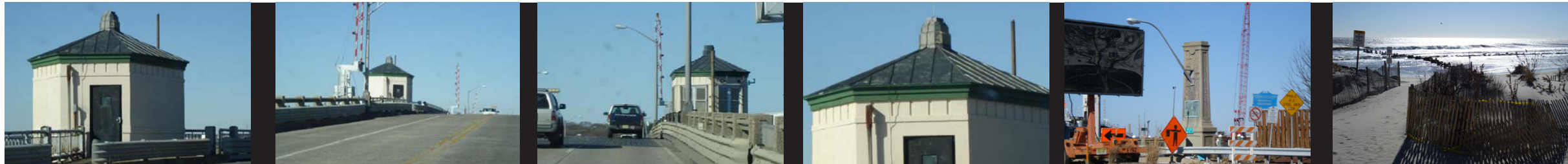


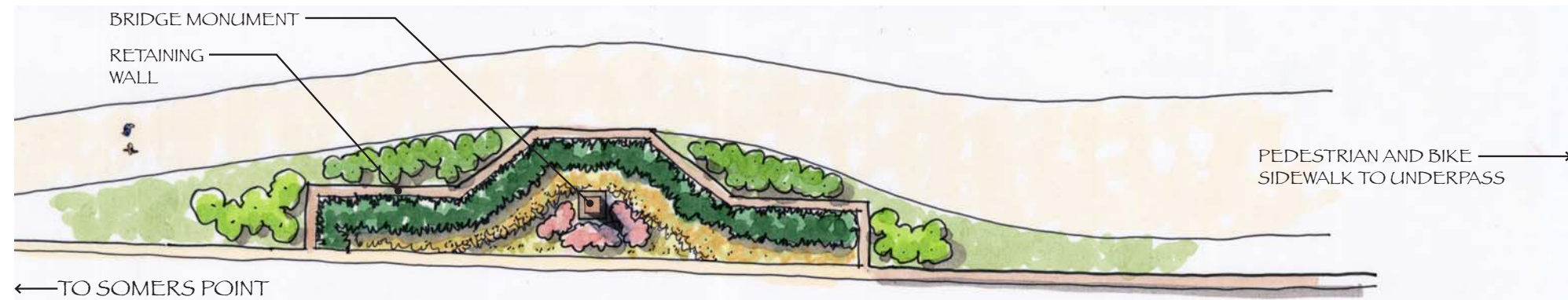
SOMERS POINT BRIDGE ABUTMENT

April 23, 2008

Somers Point, New Jersey

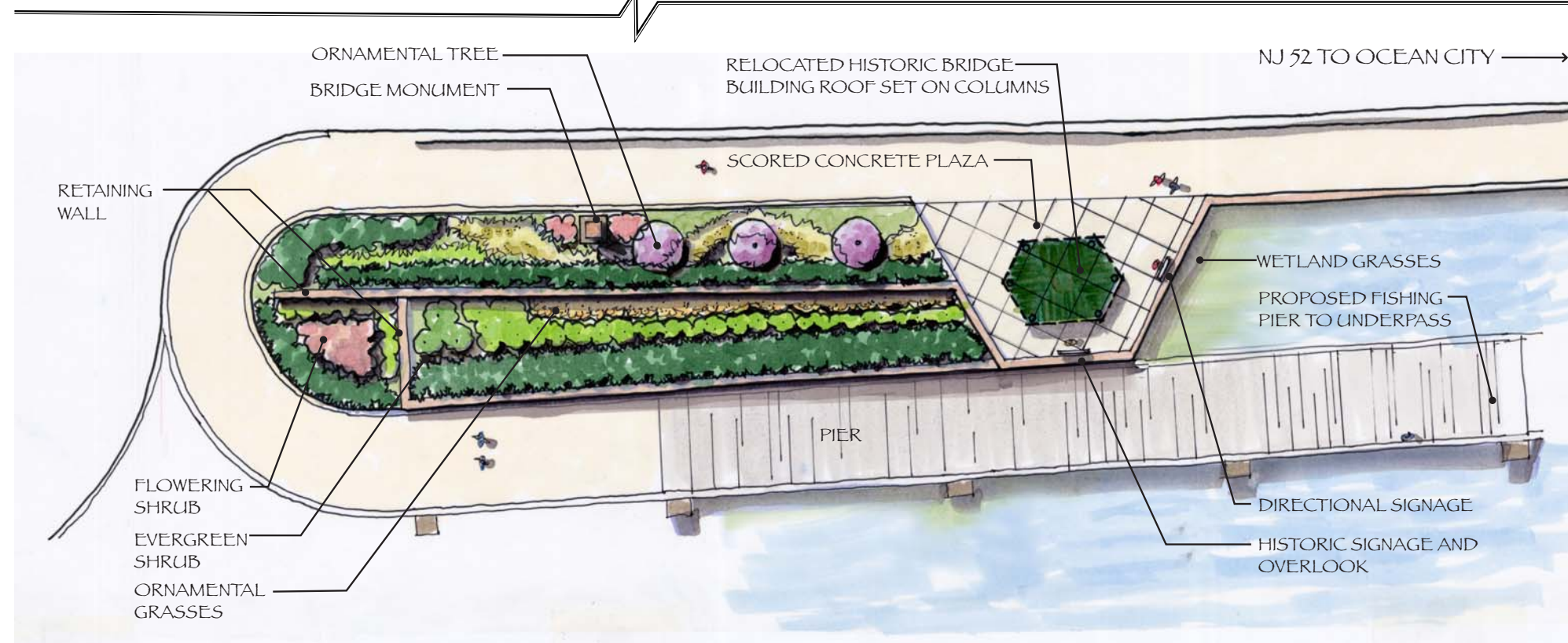


HISTORIC BRIDGE HOUSE & MONUMENT



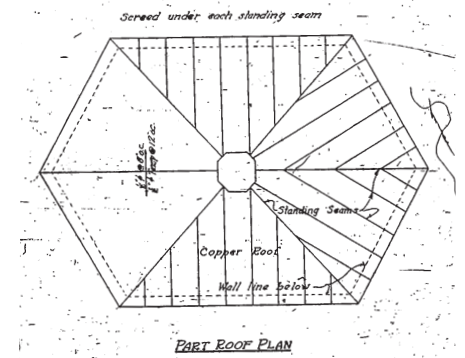
NORTHBOUND BRIDGE ABUTMENT CONCEPT PLAN

NOTE: ROAD WIDTH NOT TO SCALE



SOUTHBOUND BRIDGE ABUTMENT CONCEPT PLAN

HISTORIC PRECEDENT - BRIDGE HOUSE



ORIGINAL ARCHITECTURAL PLANS

HISTORIC AND DIRECTIONAL SIGNAGE

