

9TH STREET ENTRANCE RAMP ABUTMENT

May, 2008

Ocean City, New Jersey



EXISTING CONDITIONS

SPRING



VIBURNUM



CRAPE MYRTLE

SUMMER



HYPERICUM



SPIREA

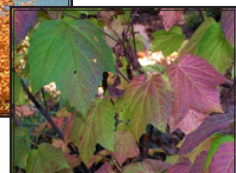


JUNIPER

FALL

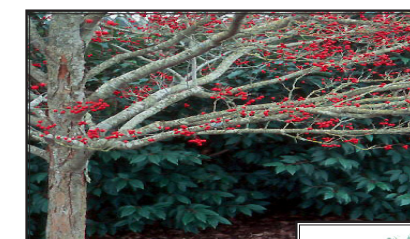


FALL FOLIAGE



VIBURNUM

WINTER



HAWTHORN



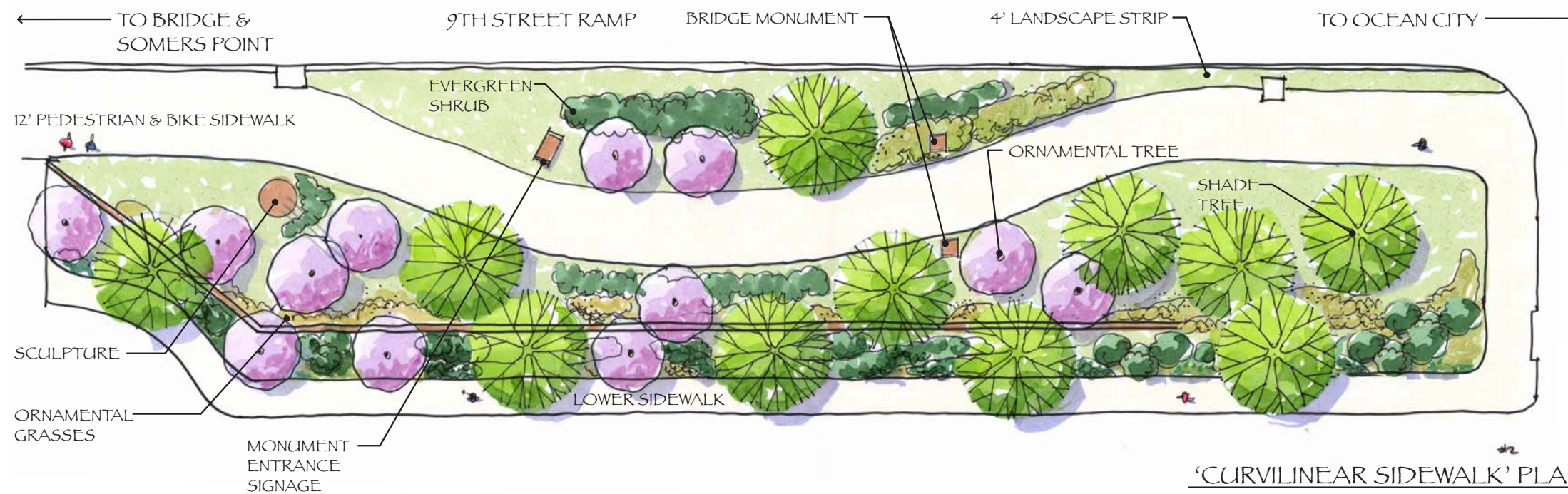
HOLLY



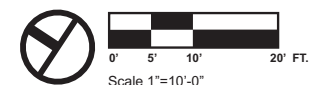
WINTERBERRY



'CURVILINEAR SIDEWALK' ELEVATION



'CURVILINEAR SIDEWALK' PLAN



Scale 1"=10'-0"