

NEW JERSEY DEPARTMENT OF TRANSPORTATION

Proposed I-295 Rehabilitation Project Townships of Deptford, Westville, Cherry Hill, West Deptford, Boroughs of Haddon Heights, Mount Ephraim, Bellmawr, Barrington Camden County and Gloucester County, New Jersey

Pre-Construction Public Information Center June 4, 2009 – 4 - 7 pm

The New Jersey Department of Transportation (NJDOT), committed to developing transportation improvements that best balance the transportation needs, the environment, community concerns and cost, will hold a Pre-Construction Public Information Center for the pavement rehabilitation of Route I-295 in Camden County and Gloucester County.

The Meeting

The Public Information Center will be held at the **Westville Courthouse, 114 Crown Point Rd, Westville, on Thursday, June 4, 2009 from 4 - 7 pm.** Please come at a time that is convenient for you. You will have the opportunity to review exhibits of the proposed project, ask questions and discuss issues with NJDOT staff members.

The Proposed Project

The I-295 Rehabilitation Project is an eight-mile pavement rehabilitation and safety improvement project that extends from Route 45 (Exit 24) in Gloucester County to Haddonfield-Berlin Road (Exit 32) in Camden County. This project does not include reconstruction of the Route 42 interchange.

The project is intended to rehabilitate the mainline roadway pavement, shoulders, and ramps and the replace bridge decks of the five structures located at the Route 30 interchange.

The pavement has deteriorated to the extent that it creates potential safety hazards. Repairs will include:

- The rehabilitation of the pavement surface through milling and overlay.
- pavement rehabilitation/reconstruction and structure repairs,
- improvements to guide rail, medians, shoulders and drainage.
- Reconstructing overpass structure decks at five locations, with substandard elements being improved.

- various traffic improvement measures including a pole mounted closed circuit camera and speed detectors will be installed at locations along the corridor.

There is no anticipated impact outside the existing right-of-way.

Traffic Mitigation

The project will be constructed in two “work zones” to minimize impacts to local businesses and residents and to reduce the number of ramp closures at one time.

- **Work Zone 1** work performed on I-295 between Route 45 and Route 42.
- **Work Zone 2** work performed on I-295 between Route 42 and County Route 561.

During morning and evening rush hours, three lanes in each direction will be maintained to ensure minimal traffic congestion through the work zones.

Concrete Wall

The project includes construction of a concrete wall in the Westville/Westville Grove area. Samples of the wall type and color can be viewed online at www.artisanprecast.com, click on “Cedarcrete.” Samples of the wall materials will also be on display during the meeting.

Schedule

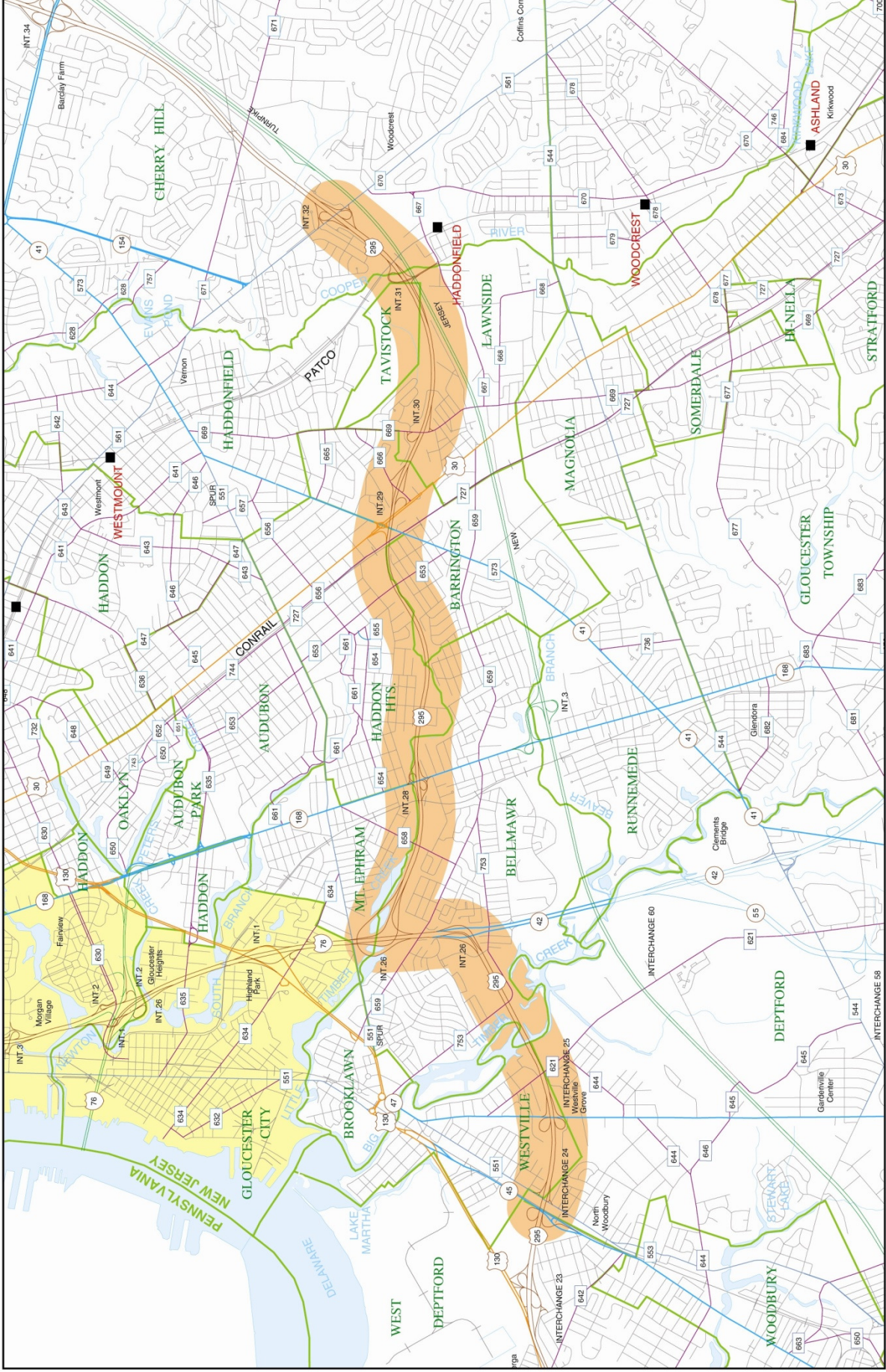
The anticipated start of construction is June 30, 2009. Total construction duration is 36 months, including three winter shutdowns.

For further information, please contact:

Patricia Feliciano
New Jersey Department of Transportation
Office of Community Relations
1035 Parkway Avenue
Trenton, NJ 08625
609 – 530 – 2110

patricia.feliciano@dot.state.nj.us





I-295 Corridor Project

Project Location Map

 Project Area



0 1/4 1/2 3/4 1

SCALE IN MILES

0 .5 1 2 .5 3

SCALE IN KILOMETERS