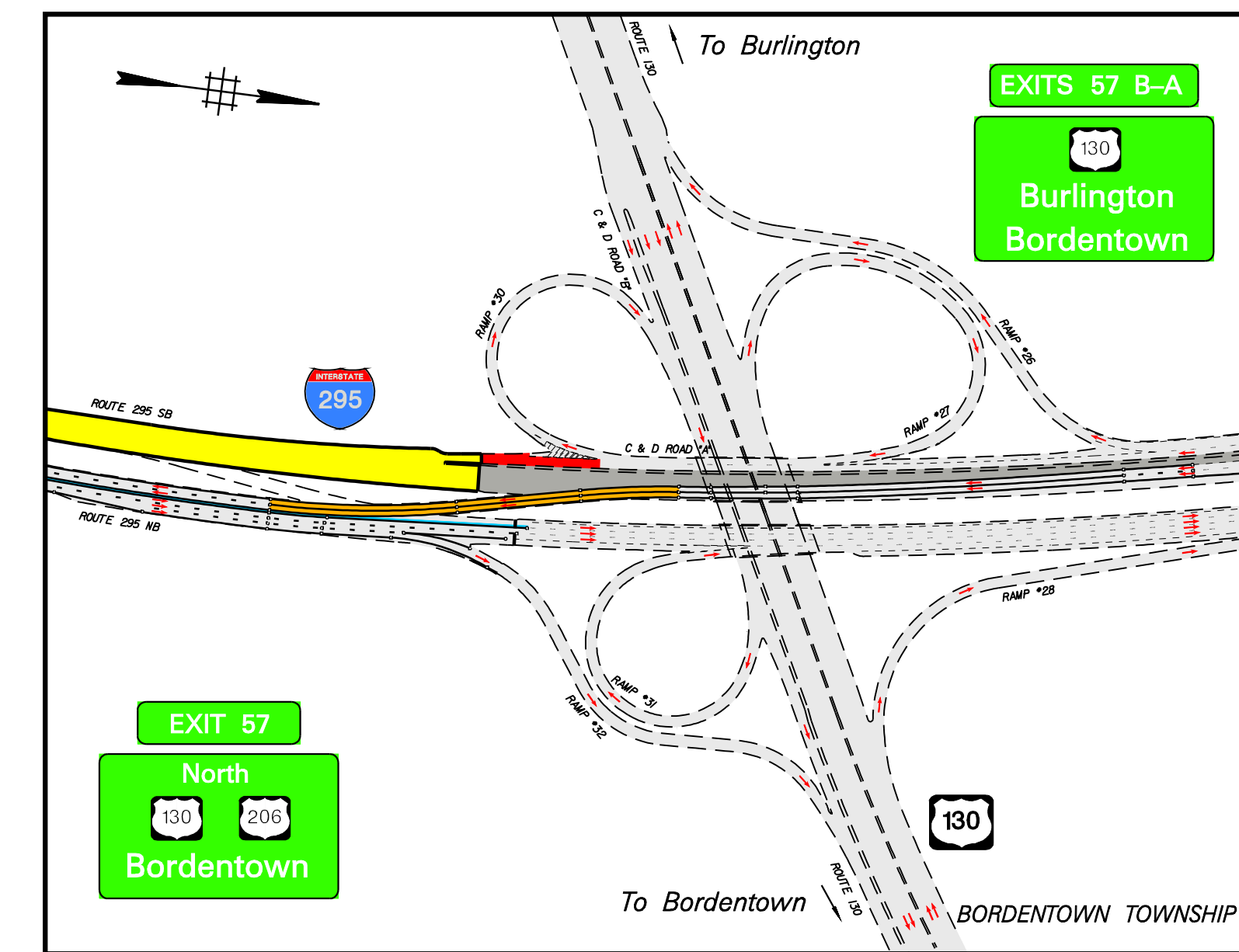
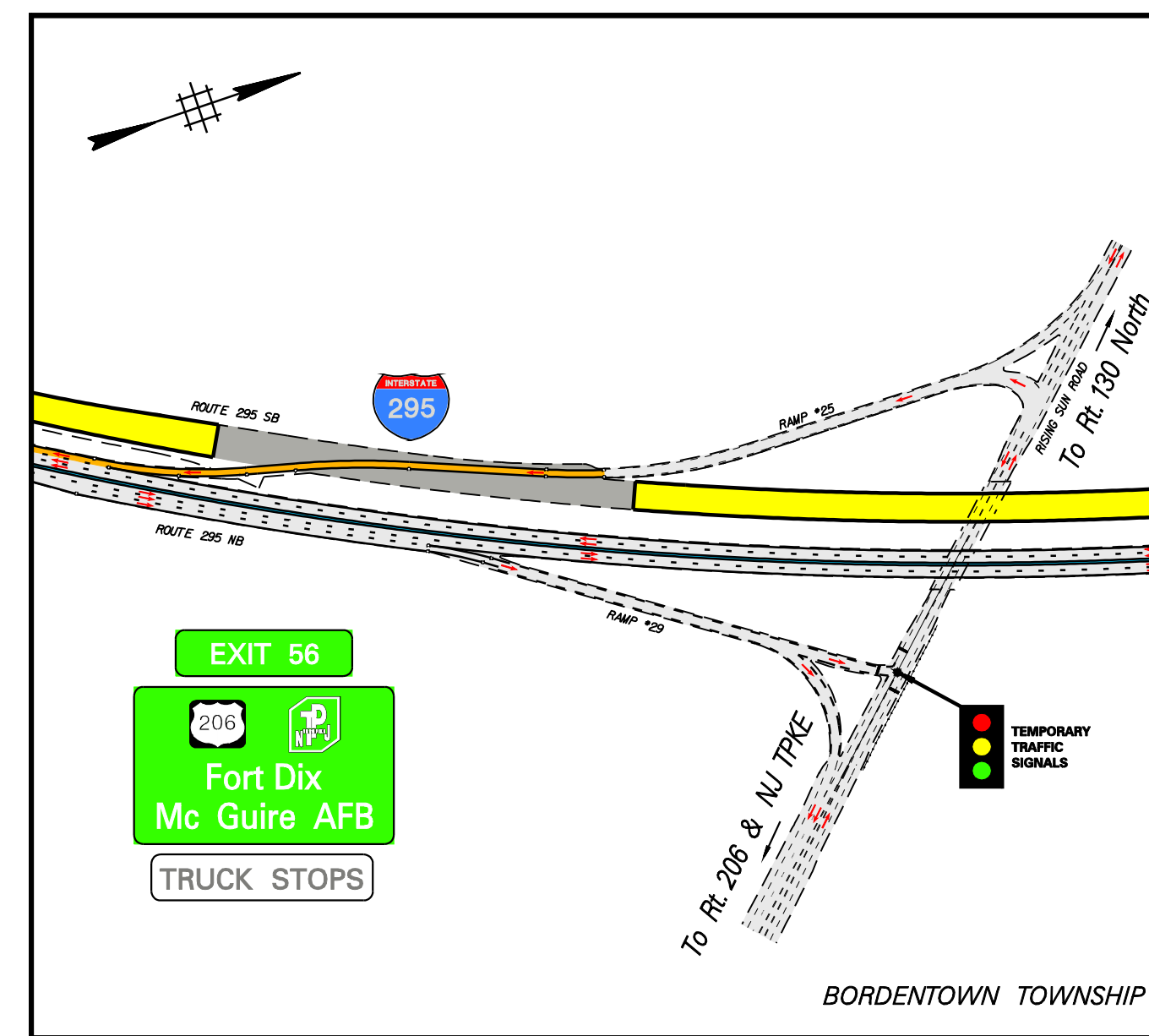
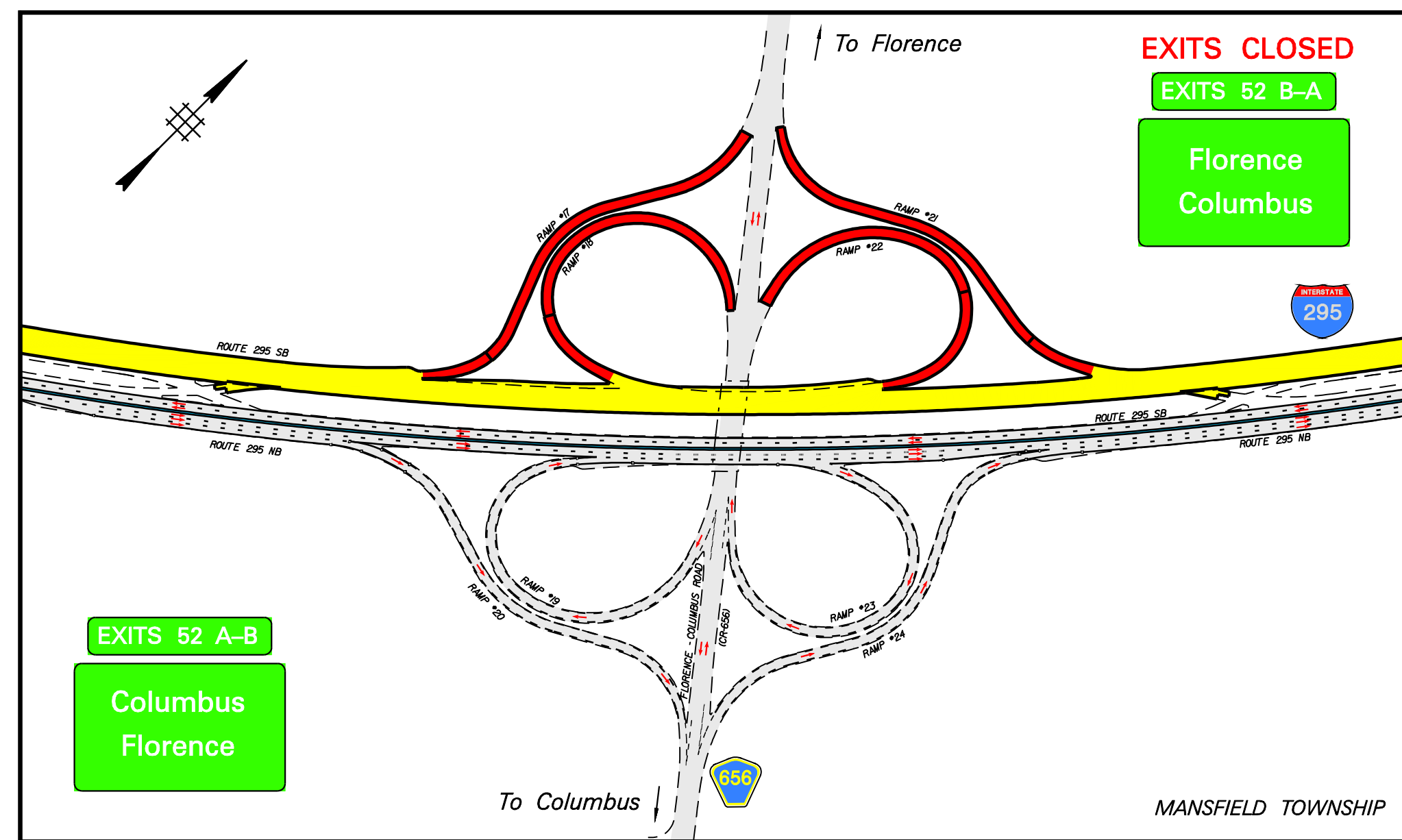
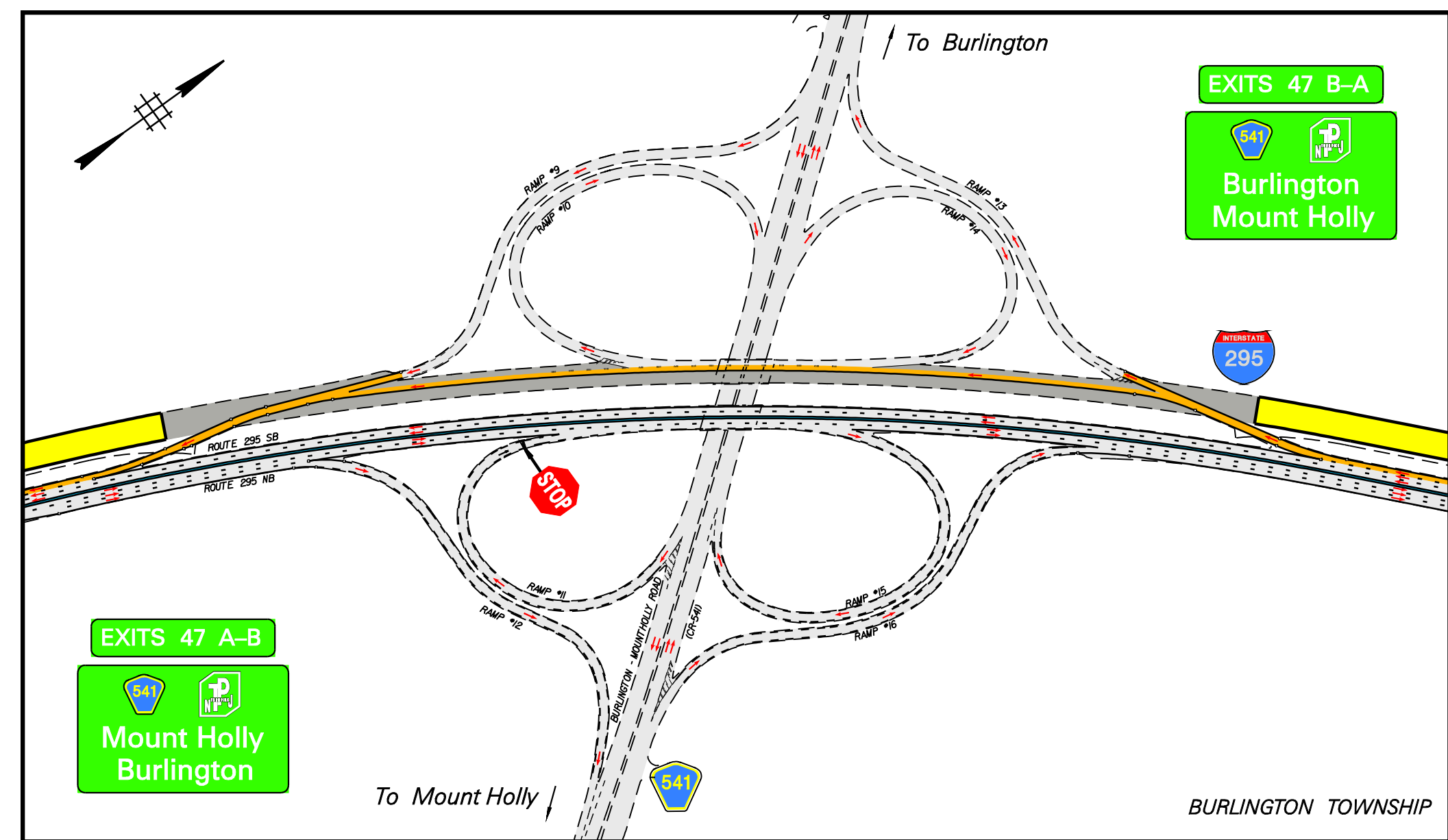
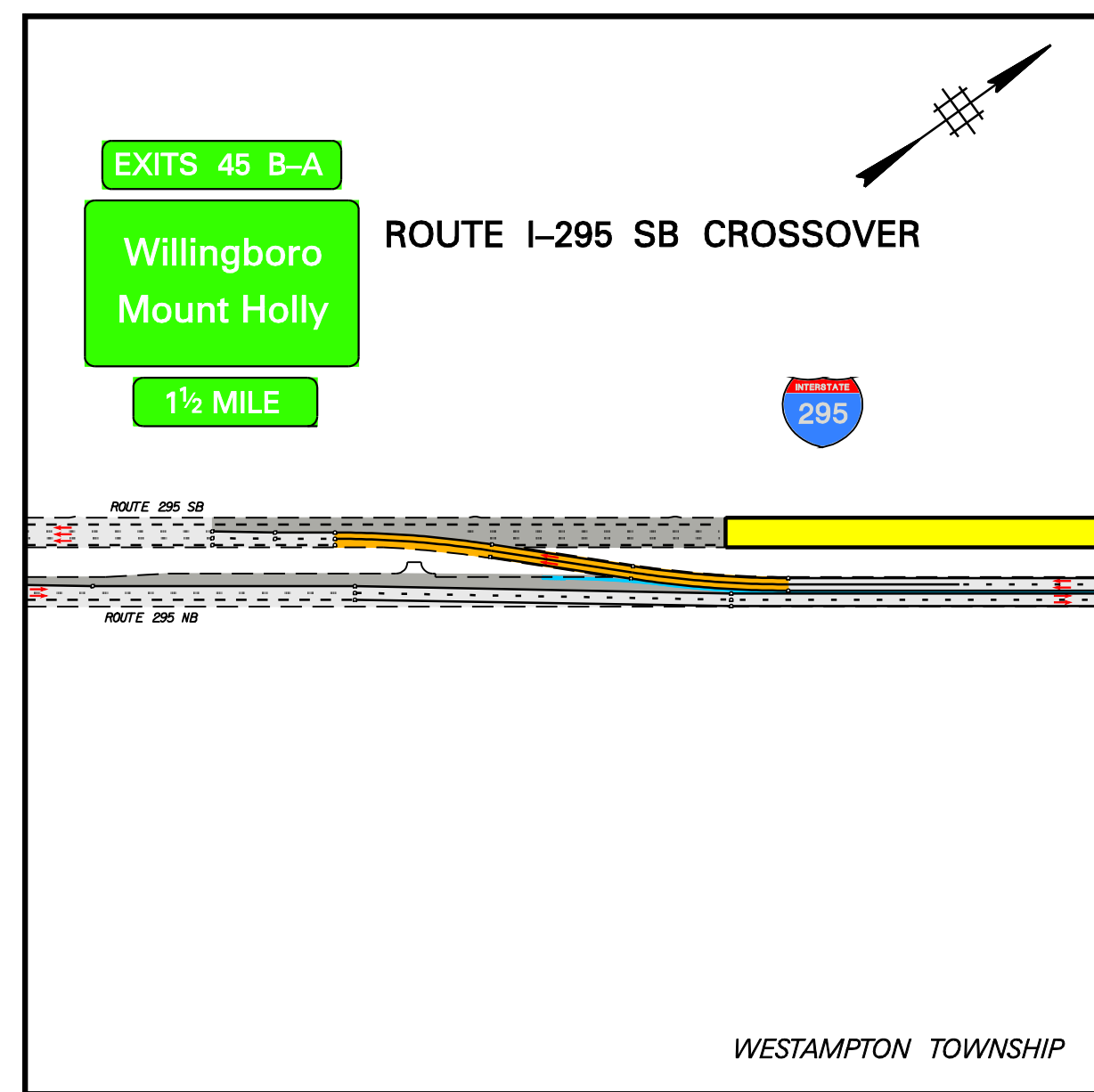
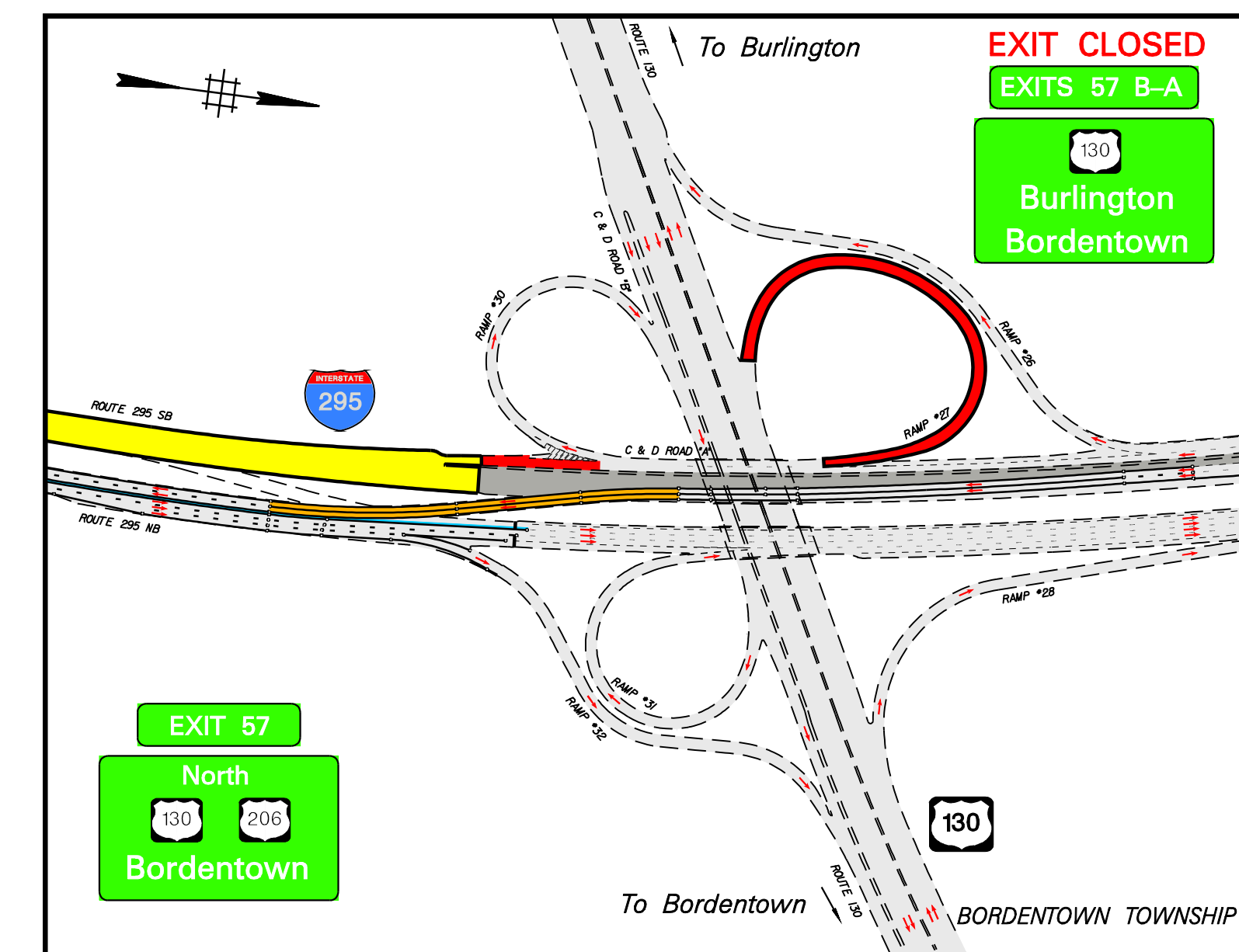
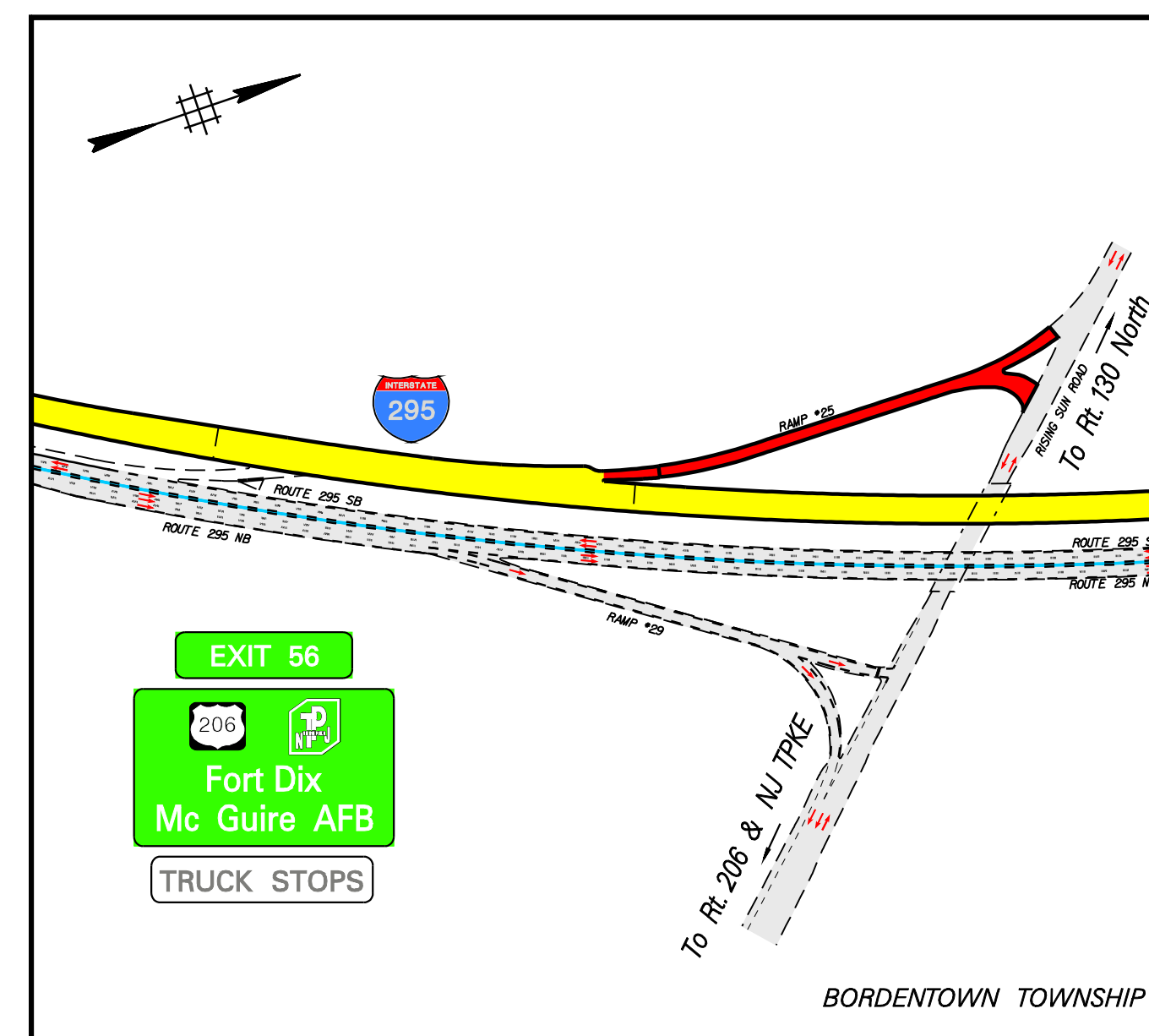
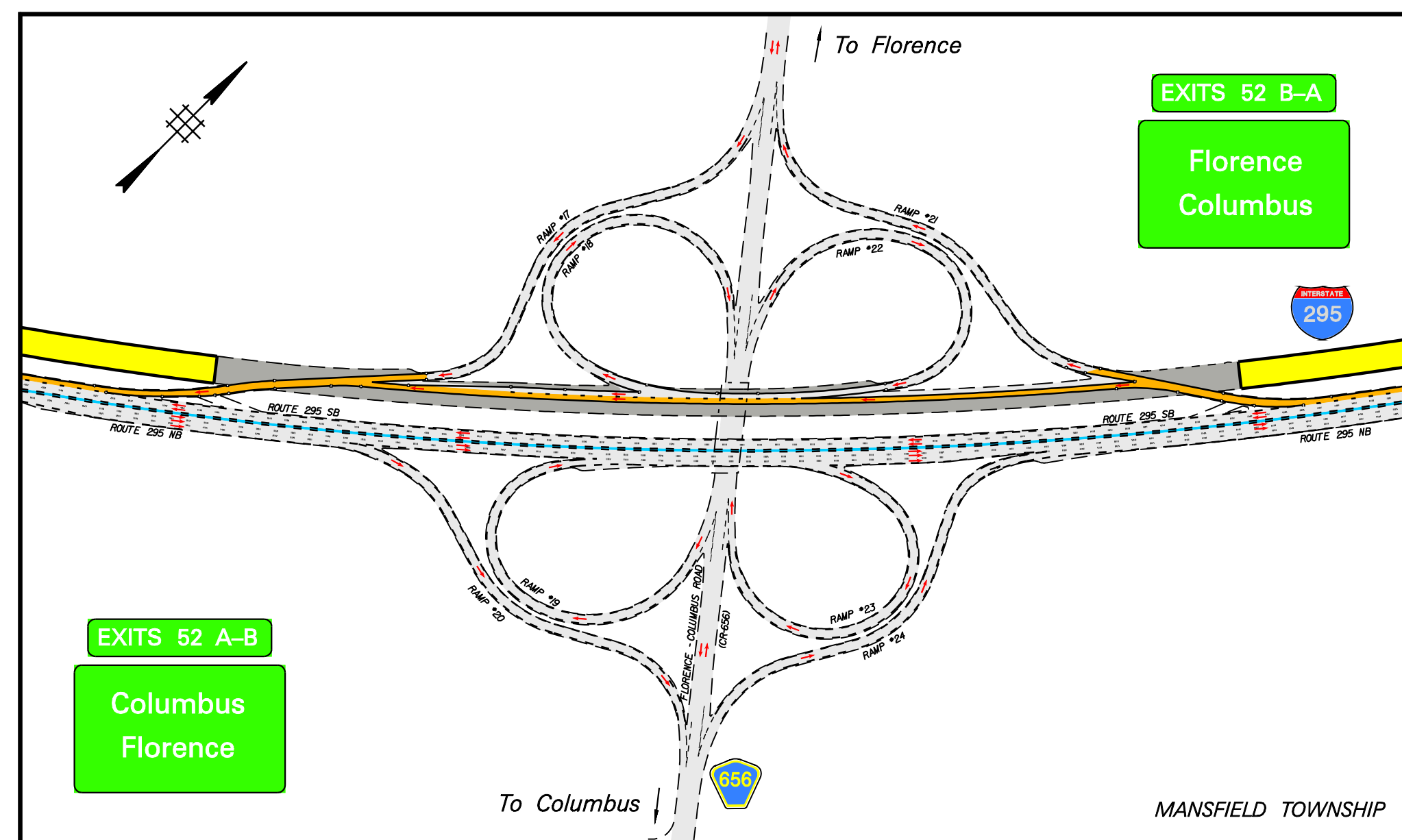
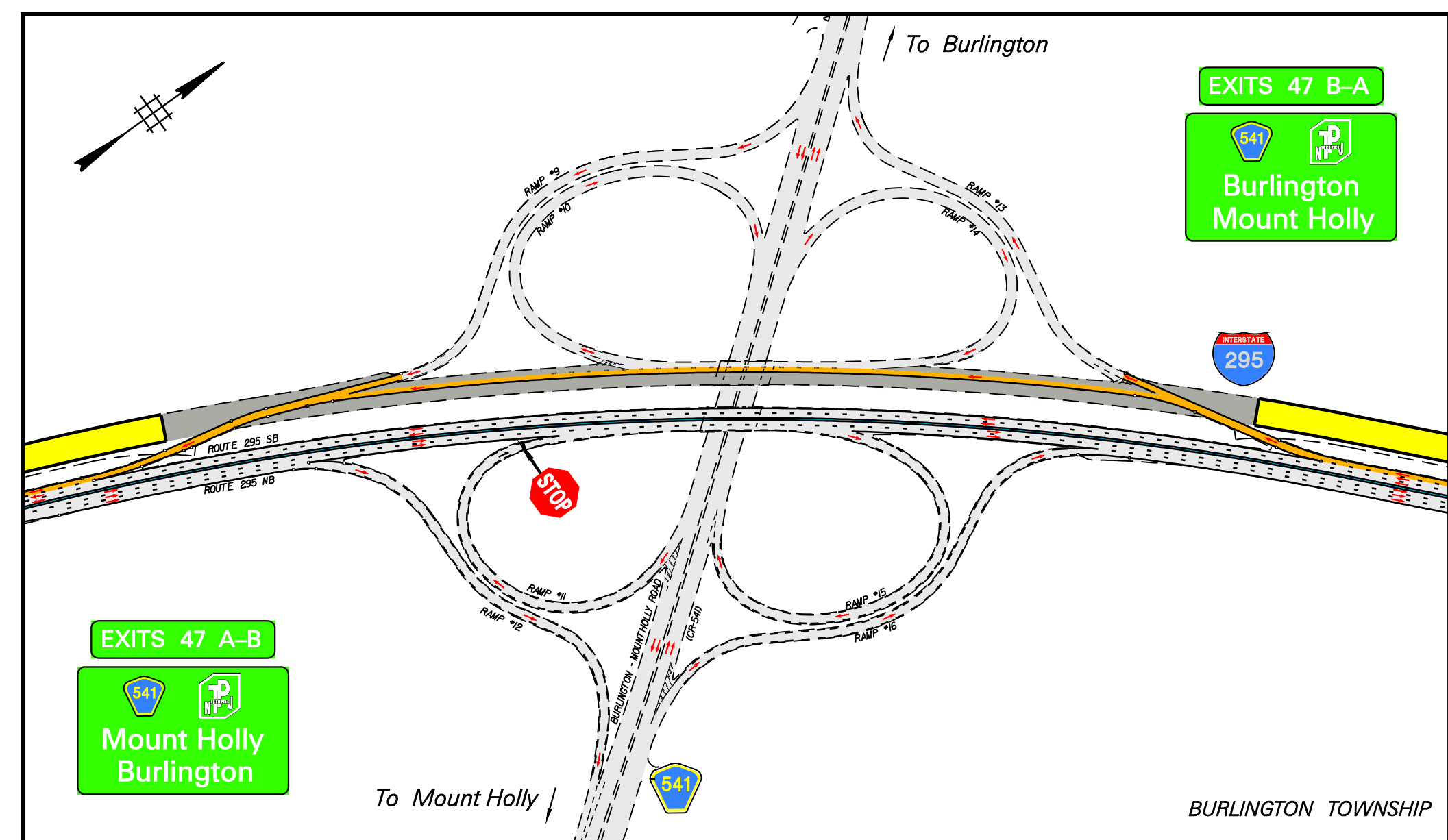
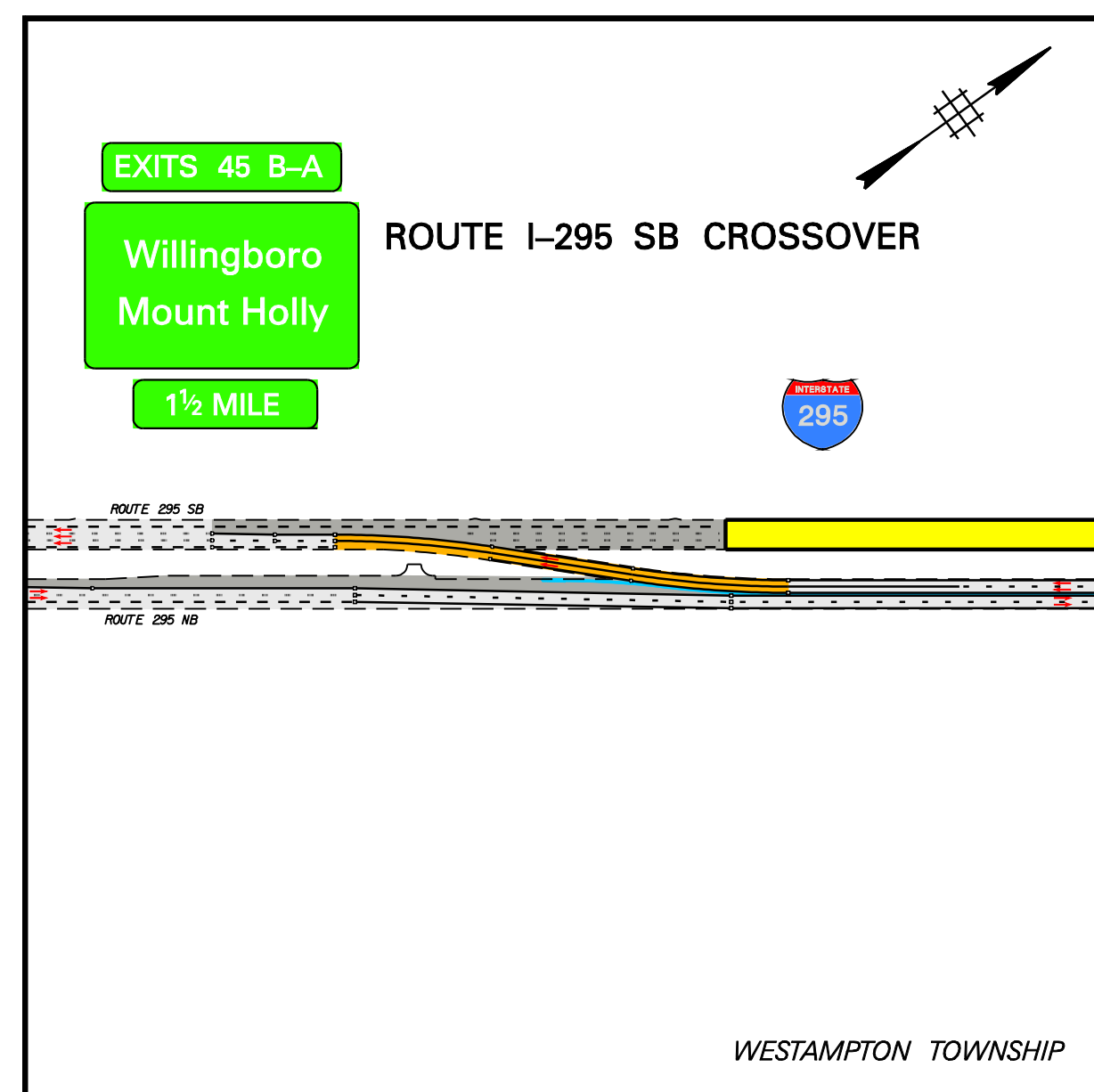


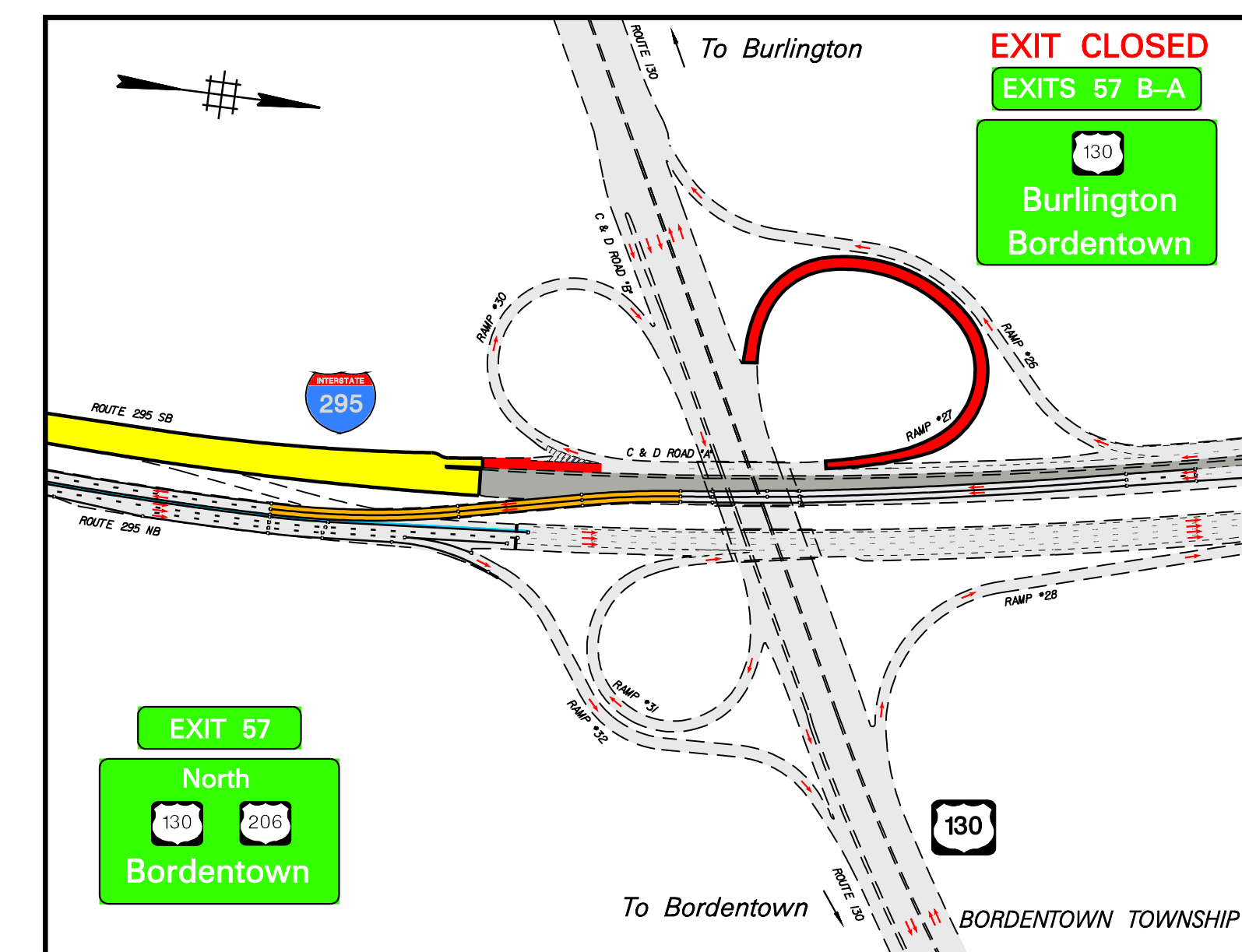
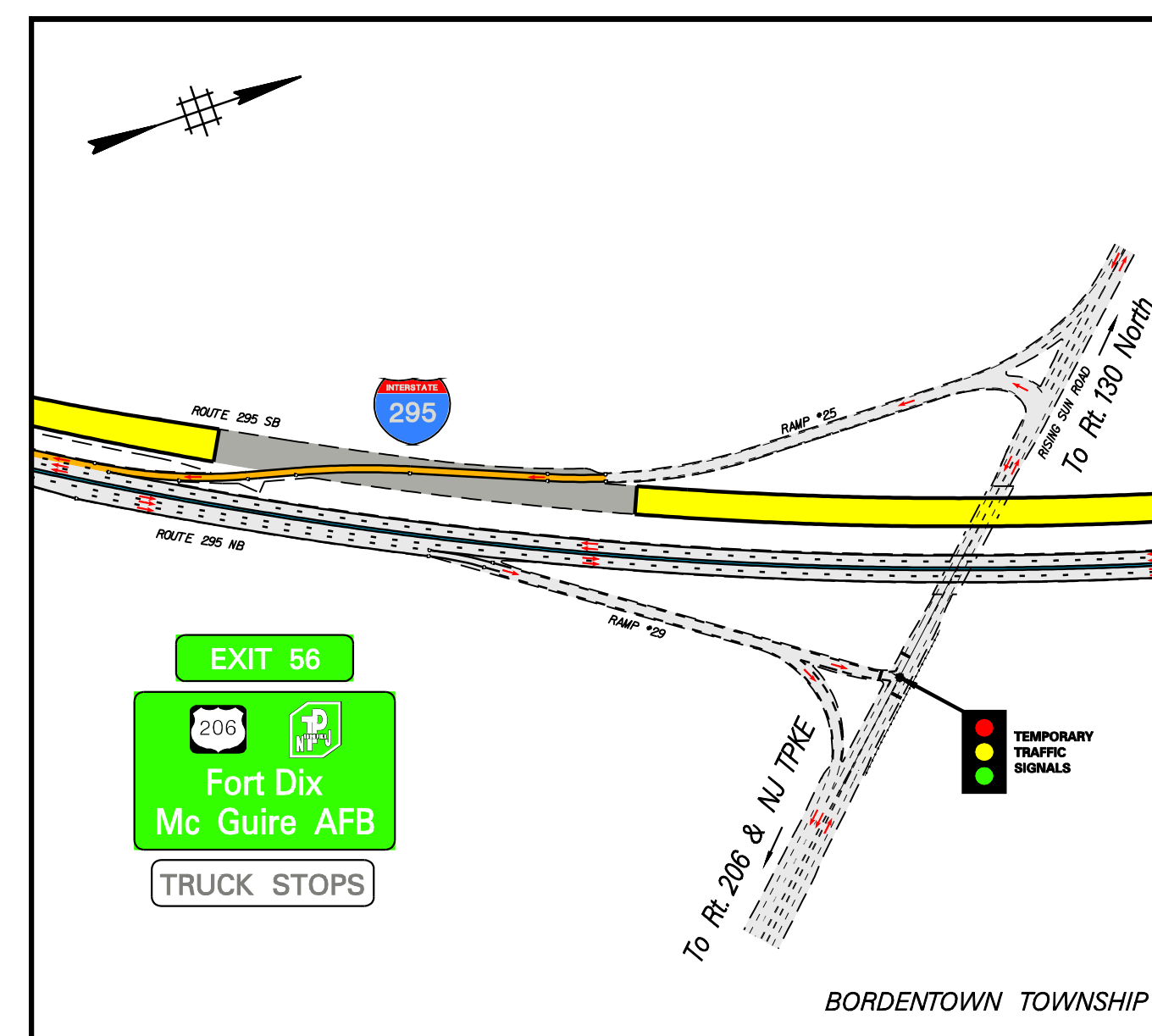
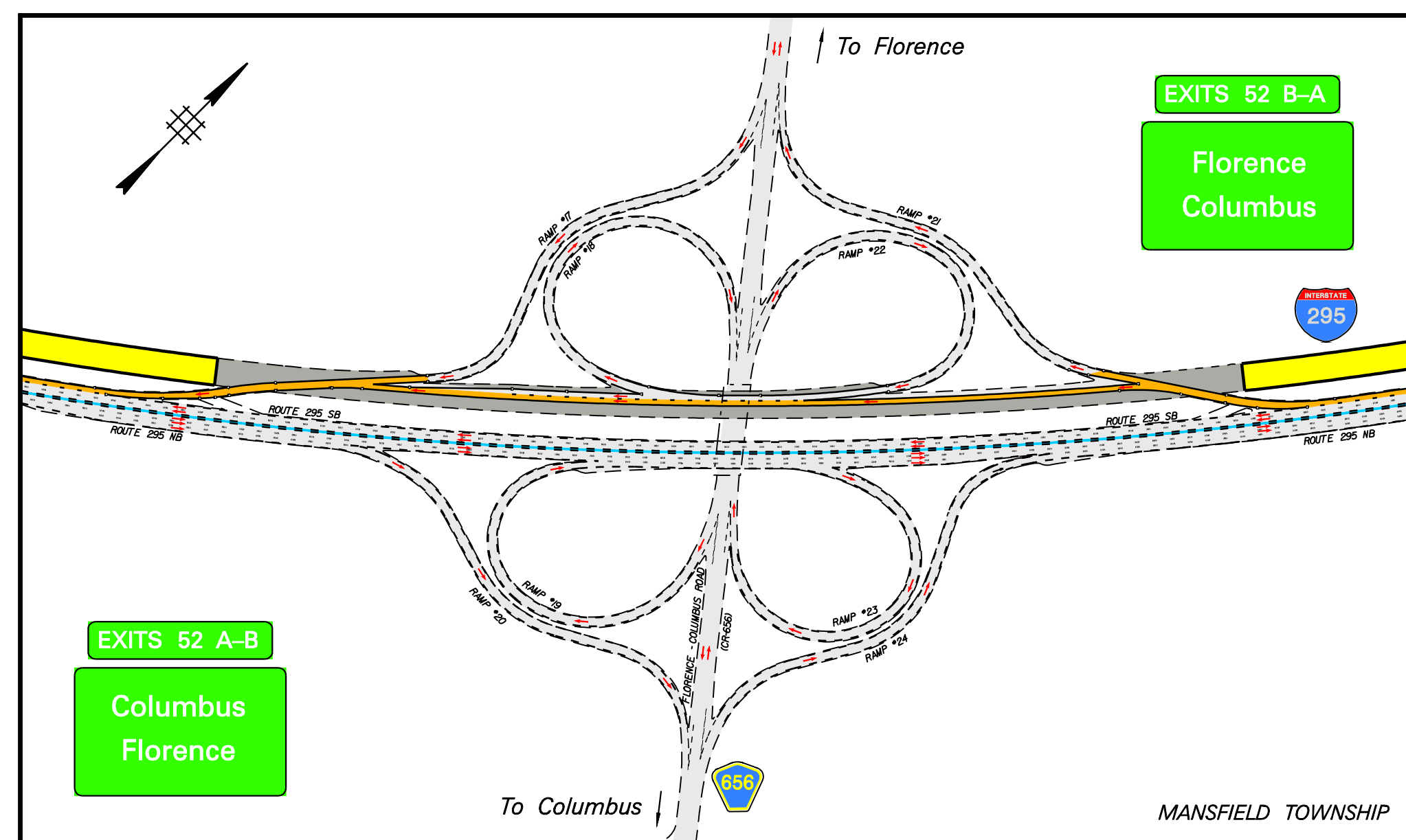
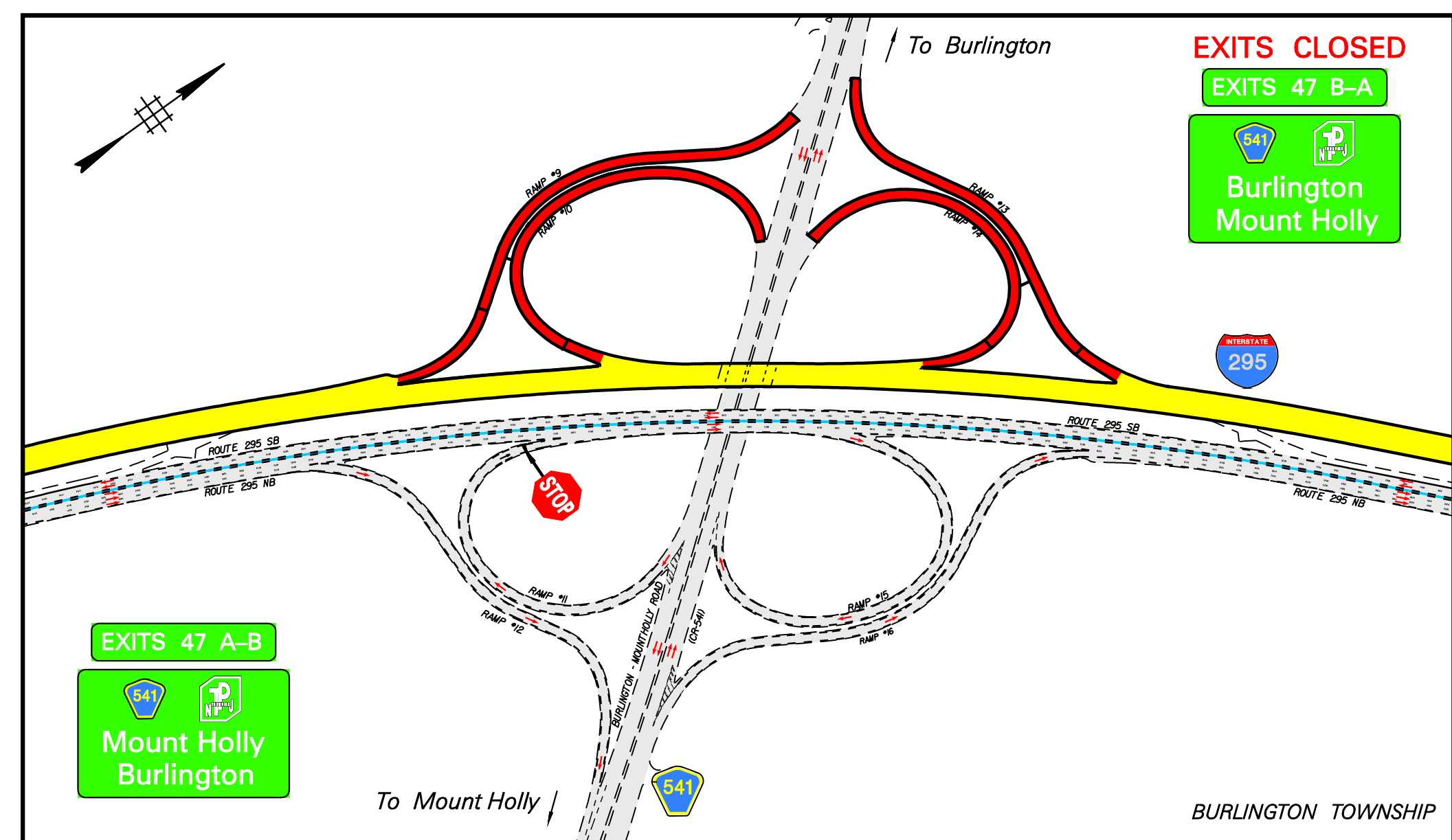
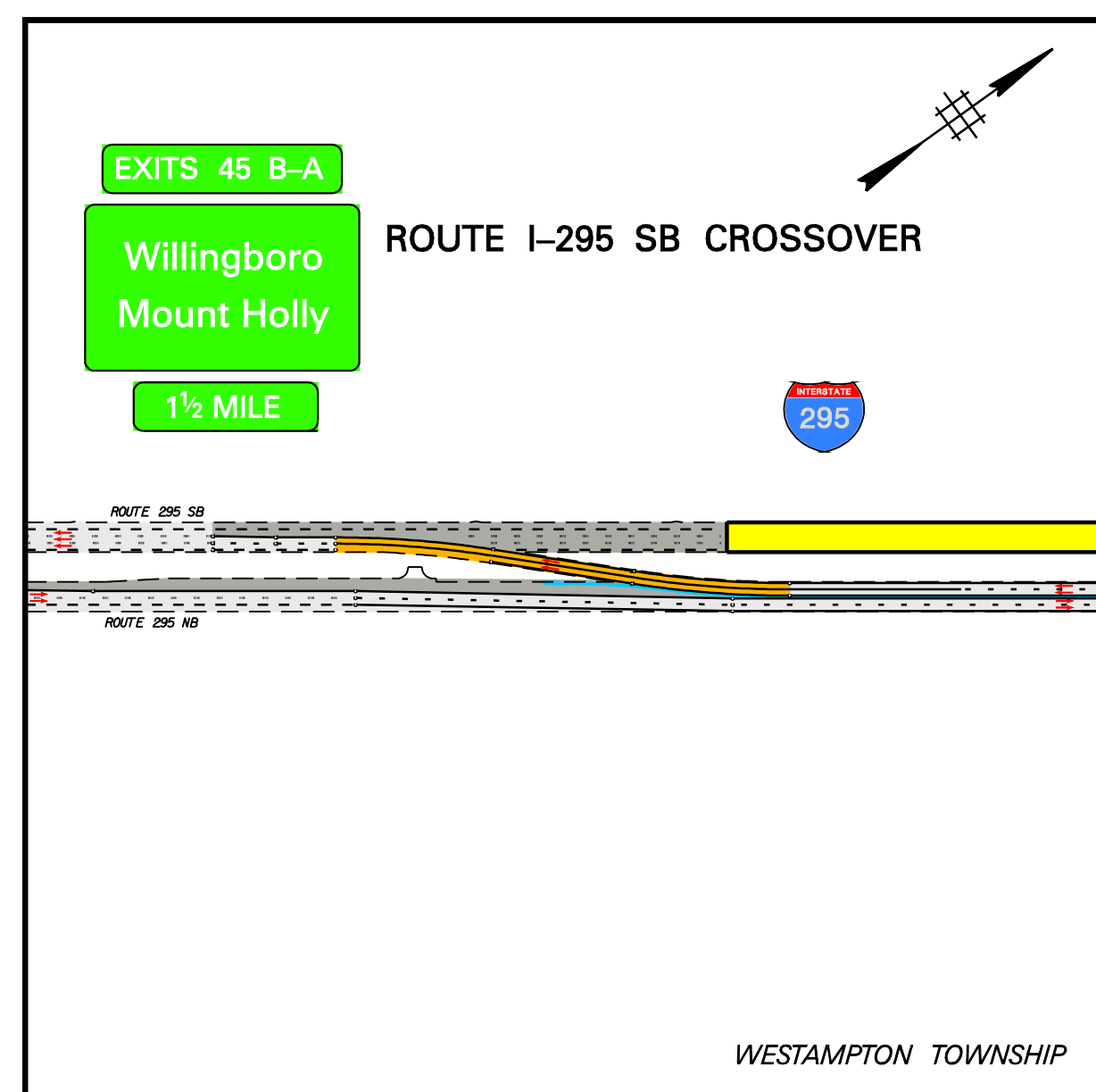
STAGE 4A



STAGE 4B

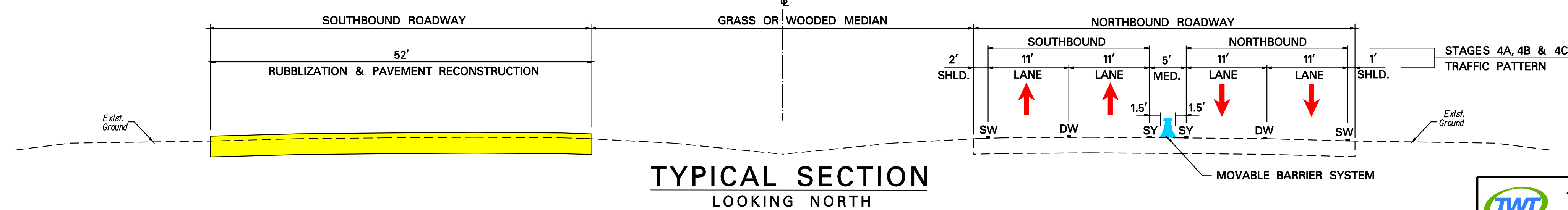


STAGE 4C

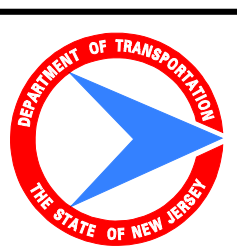


LEGEND

- WORK AREA
- RAMP CLOSED
- TRAFFIC FLOW
- CONSTRUCTION BARRIER CURB
- OPEN ROADWAYS AND RAMPS
- INACCESSIBLE ROADWAY
- TEMPORARY DIVERSIONARY ROADS (CROSSOVERS)



TWT Taylor Wiseman & Taylor
ENGINEERS | SURVEYORS | SCIENTISTS



NEW JERSEY DEPARTMENT OF TRANSPORTATION
ROUTE I-295
PAVEMENT REPAIR AND RUBBLIZATION
FROM RANCOCAS-MOUNT HOLLY ROAD TO ROUTE 130
TOWNSHIPS OF
WESTAMPTON, BURLINGTON, FLORENCE, MANSFIELD, SPRINGFIELD AND BORDENTOWN
BURLINGTON COUNTY
STAGES 4A, 4B & 4C
SUMMER 2011