



# **New Jersey Department of Transportation**

## **FACILITIES ADA SITE INSPECTIONS**

### **(Updates and Recommendations)**

## **2023**

As a follow-up to the ADA audit/site inspections of NJDOT regional facilities in 2018, during July, August and September of Calendar Year 2023, the ADA Coordinator and staff accompanied by the Division of Support Services' director, staff and state ADA Coordinator David Millstein conducted an updated ADA site inspection of five NJDOT facilities: Trenton headquarters, Mount Arlington (north), Cherry Hill (south) regional facilities, and the two tourist welcome centers/rest areas, Knowlton and Carney's Point. This report highlights noncompliant ADA features that were examined and discussed along with recommendations to bring these features into ADA compliance. The Division of Support Services will develop a prioritization schedule by January 2024 for the implementation of accessible features, including curb ramps, as appropriate.

NJDOT takes a strategic approach in assuring state-owned highways and transportation facilities comply with the ADA. To ensure ADA compliance, NJDOT uses the U.S Department of Justice's 2010 Standards for Accessible Design and ADA Accessibility Guidelines for Buildings and Facilities (ADAAG). NJDOT's goal is to provide accessible state-owned transportation facilities for all persons living, working, or traveling in New Jersey.

A public entity may not deny the benefits of its programs, activities, and services to individuals with disabilities because its facilities are inaccessible. A public entity's services, programs, or activities, when viewed in their entirety, must be readily accessible to and usable by individuals with disabilities. This standard, known as "program accessibility," applies to all existing facilities of a public entity. "The Americans with Disabilities Act Checklist for Readily Achievable Barrier Removal" (ADA Checklist) details requirements found in the ADA Standards for Accessible Design (Standards).

The ADA Checklist was used as a tool during the ADA Regional Facilities Site Inspections to assist in determining methods for providing program accessibility.



## Trenton Headquarters

August 24, 2023

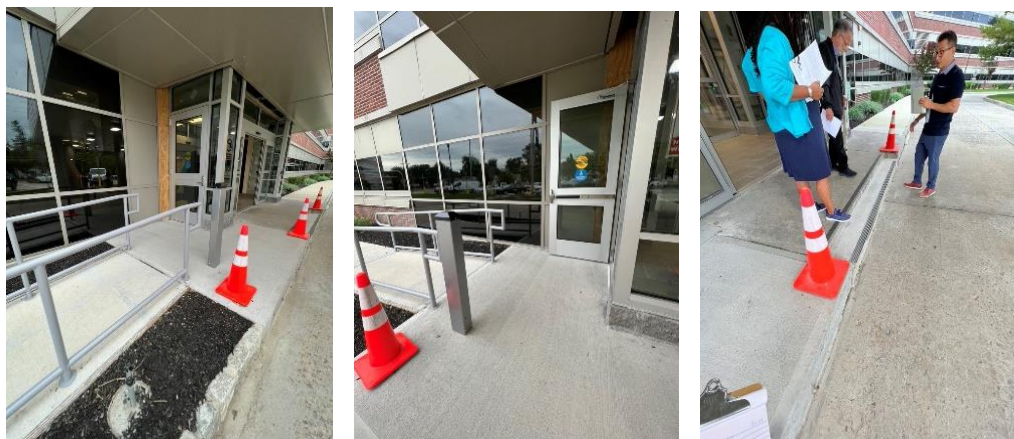
Headquarters is composed of the Main Office Building (MOB), Finance & Administration (F&A) Building and the Engineering & Operations (E&O) Building.

### MOB:

#### Exterior:

#### Building Entrance (ADAAG 4.1, 4.2, 4.3)

- 1) At the time of the site inspection, the entrance was under construction. After construction, there will be two yellow bollards placed on each side of the entrance, totaling four for ADA accessibility identification.



**Parking and Passenger Loading Zones (ADAAG 4.6)**

- 2) Recommended restriping accessible parking space in front of MOB.



**Accessible Sites and Exterior Facilities (ADAAG 4.1.2)**

- 3) Recommended installing a Detectable Warning Surface (DWS) on the sidewalk from Lot B toward MOB.



- 4) Deteriorated concrete sidewalk poses a tripping hazard and will be repaired.



**Interior:**

**Space Allowance and Reach Ranges (ADAAG 4.2)**

- 5) Security sign-in station: It is recommended that a table be permanently provided for ADA accessibility between 27in. - 34in. in height.



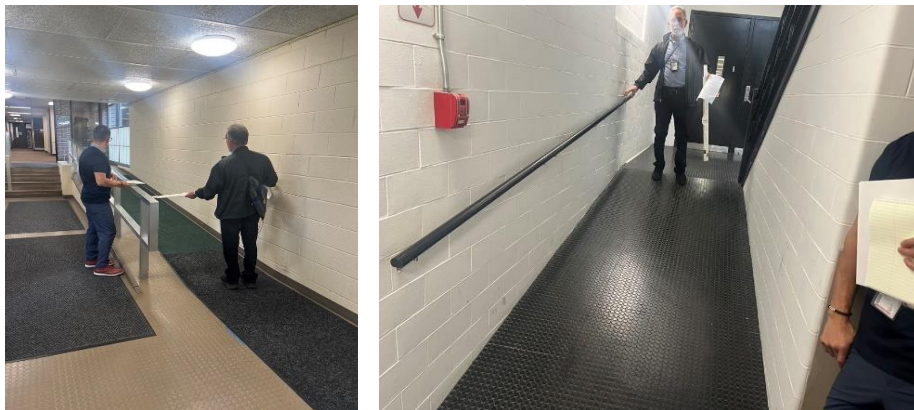


**F&A Building:****Exterior:**

- 1) The new F&A entrance will be complete by March 2024.

**Interior:****Accessible Buildings: New Construction and Ramps (ADAAG 4.1.3, 4.8)**

- 2) It is recommended that a handrail be installed along ADA ramp at entrance/exit near security station.  
(See picture on the left) ↓



- 3) The door from the F&A building to MOB will need to be replaced and/or calibrated to comply with opening and closing forces for ADA compliance. (Recommended 7-10lbs. pressure for door closure)

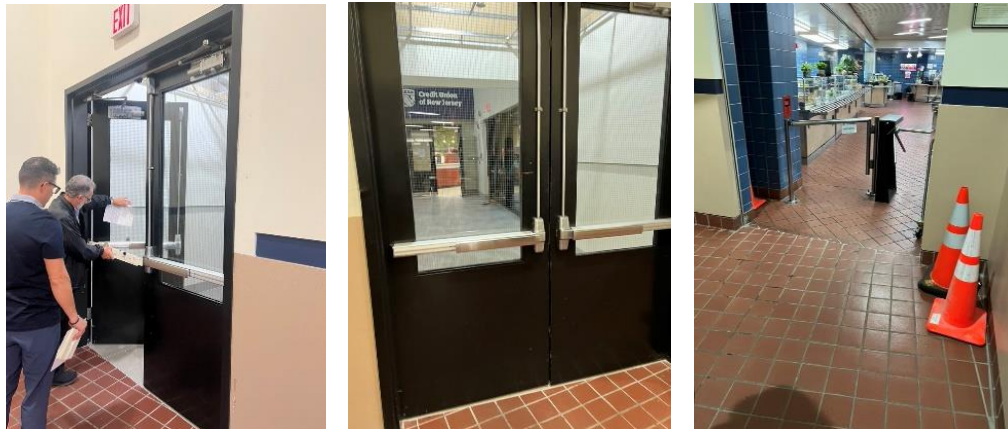
- 4) It is recommended that an additional handrail be installed along ADA ramp between MOB and F&A. (Handrail should be on both sides) (See picture on the right) ↑

### **E&O Building:**

#### **Cafeteria:**

#### **Automatic Doors and Power-Assisted Doors (ADAAG 4.13.12)**

- 1) One automatic ADA accessible push-button door will be installed at the main entrance to the cafeteria.
- 2) The cafeteria entrance door (near Credit Union) will be replaced and calibrated to comply with opening and closing forces for ADA compliance. One automatic door ADA accessible push-button door will be installed.



### **Trenton Headquarters Overall Recommendations:**

- 1) Restripe accessible parking spaces in front of MOB.
- 2) Install a detectable warning surface (DWS) on the sidewalk from Lot B towards MOB.
- 3) Provide permanent sign-in table at MOB security station for ADA accessibility between 27in. - 34in. in height.
- 4) Install a handrail along ADA ramp at entrance/exit near security station.
- 5) Install an additional handrail along ADA ramp between MOB and F&A
- 6) Install one automatic ADA accessible push-button door at each cafeteria entrances/exits.
- 7) Ensure opening and closing forces on all fire doors are ADA compliant.

**Update: On October 30, 2023, automatic ADA accessible push-buttons were installed at cafeteria doors.**

## MOUNT ARLINGTON SITE INSPECTION



### NORTH REGION HEADQUARTERS

July 14, 2023

#### Accessible Approach/Entrance of Building:

All individuals should be able to arrive on the site, approach the building, and have accessibility to facility. At least one route of travel should be safe and accessible for everyone, including those with disabilities.

#### **Exterior:**

#### **Parking and Passenger Loading Zones (ADAAG 4.6)**

- 1) An accessible parking sign will need to be tightened. Currently, part of the sign is off-centered.





## Interior:

### Accessible Buildings: Alterations and Elevators (ADAAG 4.1.6, 4.10)

- 2) The timing of the elevator doors is 6 seconds. The sensor to detect motion is malfunctioning. The elevator doors will need to be replaced and/or calibrated to comply with opening and closing times for ADA compliance.

### Signage (ADAAG 4.30)

- 3) It is recommended that deaf individual(s) signage be installed on the first and second floors, near the elevator.



(First Floor)



(Second Floor)

### 4) ADA Room:

ADA Rooms have been installed in all regional locations. They comply with the requirements of the ADA by ensuring accessible accommodations for those with disabilities to administer medication. The room is also designated to serve as a lactation/pumping station for mothers.

### Sinks (ADAAG 4.24)

- Recommend installing a sink for sanitary purposes.





- 5) There is a hole in the carpet on the second floor which may pose a tripping hazard. It is recommended that the carpet/floor be repaired to comply with ADA accessibility standards.



**Mount Arlington Overall Recommendations:**

- 1) The elevator doors will need to be replaced and/or calibrated to comply with opening and closing timing for ADA compliance.
- 2) Install deaf individual(s) signage near elevators on the first and second floors.
- 3) Install a sink in the ADA Room for sanitary purposes.
- 4) It is recommended that the carpet/floor on the second floor be repaired.



## KNOWLTON TOURIST WELCOME CENTER/REST AREA



**July 14, 2023**

### **Accessible Approach/Entrance of Building:**

#### **Exterior:**

##### **Detectable Warnings (ADAAG 4.29)**

- 1) There are four detectable warning surfaces (DWS) along the front of the building that should be replaced due to deterioration.

##### **Parking and Passenger Loading Zones (ADAAG 4.6)**

- 2) Accessible parking spaces should be repainted.



- 3) The overgrown vegetation needs to be treated across the entire facility. Specifically, the vegetation in between the sidewalk slabs in front of the building since this may pose a tripping hazard for pedestrians.



#### **Curb Ramps and Detectable Warnings (ADAAG 4.7, 4.29)**

- 4) The new ADA curb ramp near the accessible portable toilets will need to be extended, along with the DWS.



**Doors (ADAAG 4.13)**

- 5) The back entrance is non-compliant with current ADA requirements. The accessible push-button is currently not active.

**Interior:****Rest Rooms:****Toilet Stalls (ADAAG 4.17)**

- 6) Both women and men's rest room accessible stalls need to be extended outward to provide enough clear space for accessibility.





**Knowlton Rest Area Overall Recommendations:**

- 1) Install 4 detectable warning surfaces (DWS) in front of the building.
- 2) Restripe accessible parking spaces.
- 3) Treat the overgrown vegetation across the entire facility.
- 4) Extend the curb ramp and DWS near the accessible portable toilets.
- 5) Reactivate the accessible push-button for back entrance/exit.
- 6) Extend women and men's rest room accessible stalls to provide enough clear space for accessibility.

**CHERRY HILL SITE INSPECTION****September 20, 2023****SOUTH REGION HEADQUARTERS****Accessible Approach/Entrance of Building:****Exterior:****Doors (ADAAG 4.13)**

- 1) The front entrance door will need to be replaced and/or calibrated to comply with opening and closing forces for ADA compliance. (Recommended 7-10lbs. pressure for door closure)

**Accessible Sites and Exterior Facilities (ADAAG 4.1.2)**

- 2) DWS mat will be replaced, it is chipped and is starting to deteriorate.



- 3) The front of the building has chipped/damaged concrete pads which could be a potential tripping hazard.



### **Parking and Passenger Loading Zones (ADAAG 4.6)**

- 1) The accessible parking spots in the rear of the building will be extended to 18ft (length) for compliance with ADA requirements.



### **Doors (ADAAG 4.13)**

- 2) The back entrance doors will need to be replaced and/or calibrated to comply with opening and closing forces for ADA compliance. The second set of doors of the back entrance need to be adjusted as well.

### **Interior:**

- 3) The front entrance push-to-exit button is currently not working and should be replaced.
- 4) The door to the lunchroom will need to be replaced and/or calibrated to comply with opening and closing forces for ADA compliance.

### **Fixed or Built-in Seating and Tables (ADAAG 4.32)**

- 5) Facilities staff mentioned they would add a shelf on the wall in the ADA Room to provide a flat surface for medication, etc.

### **Cherry Hill Overall Recommendations:**

- 1) Replace the front entrance door and/or calibrate to comply with opening and closing forces for ADA compliance.
- 2) Replace DWS in front of the building.
- 3) Resurface concrete pads in front of the building.
- 4) Adjust accessible parking spots in the rear of the building to 18ft.
- 5) Replace the back entrance door and/or calibrate to comply with opening and closing forces for ADA compliance.

- 6) Reactivate the front entrance push-to-exit button.
- 7) Replace the door to the lunchroom and/or calibrate to comply with opening and closing forces for ADA compliance.
- 8) Install a shelf on the wall in the ADA/Lactation Room to provide a flat surface for individuals.

## **CARNEY'S POINT TOURIST WELCOME CENTER/ REST AREA**



**August 23, 2023**

### **Accessible Approach/Entrance of Building:**

#### **Exterior:**

#### **Accessible Sites and Exterior Facilities (ADAAG 4.1.2)**

- 1) It is recommended that the front/back entrances be made accessible for all users. Accessible push-button doors will be installed for ADA accessibility.





**Doors (ADAAG 4.13)**

- 2) There are two tripping hazards from outdated piping in front of the building in the concrete pads that should be repaired.

**Detectable Warnings (ADAAG 4.29)**

- 3) Detectable Warning Surfaces (DWS) in front of the building need to be replaced due to deterioration (2). There is one DWS in the back of the building that needs to be replaced as well. There are three DWS's in total that need to be replaced for compliance.



### **Parking and Passenger Loading Zones (ADAAG 4.6)**

- 4) Accessible parking spaces need to be restriped.



### **Slope (ADAAG 4.3.7)**

- 5) The concrete behind the second DWS in front of the building is steep for individuals using a wheelchair.

### **Curb Ramps (ADAAG 4.7)**

- 6) It is recommended that the curb in front of the building be reconstructed to a depressed curb. Also, there will be yellow bollards placed around accessible parking signs (for protection and bright identification.)
- 7) Handicap signs on the accessible portable toilets will be replaced for greater visibility.



**Fixed or Built-in Seating and Tables (ADAAG 4.32)**

- 8) There are no ADA compliant picnic tables on the grounds. Facilities will add two picnic tables that are ADA accessible.



**Interior:**

**Toilet Stalls (ADAAG 4.17)**

- 9) Accessibility sign should be installed on the women's rest room ADA stall.



**Signage (ADAAG 4.30)**

10) ADA signage should be installed outside of the women's rest room.

**Carney's Point Rest Area Overall Recommendations:**

- 1) Resurface concrete pads in front of the building to eliminate tripping hazards.
- 2) Replace the three DWS's that have been identified to comply with Accessibility Standards.
- 3) Restripe accessible parking spots.
- 4) Reconstruct the curb in front of the building into a depressed curb.
- 5) Replace handicap signs on the accessible portable toilets.
- 6) Add two accessible picnic tables.
- 7) Add accessible signs to women's rest room. (Entrance and ADA stall)

